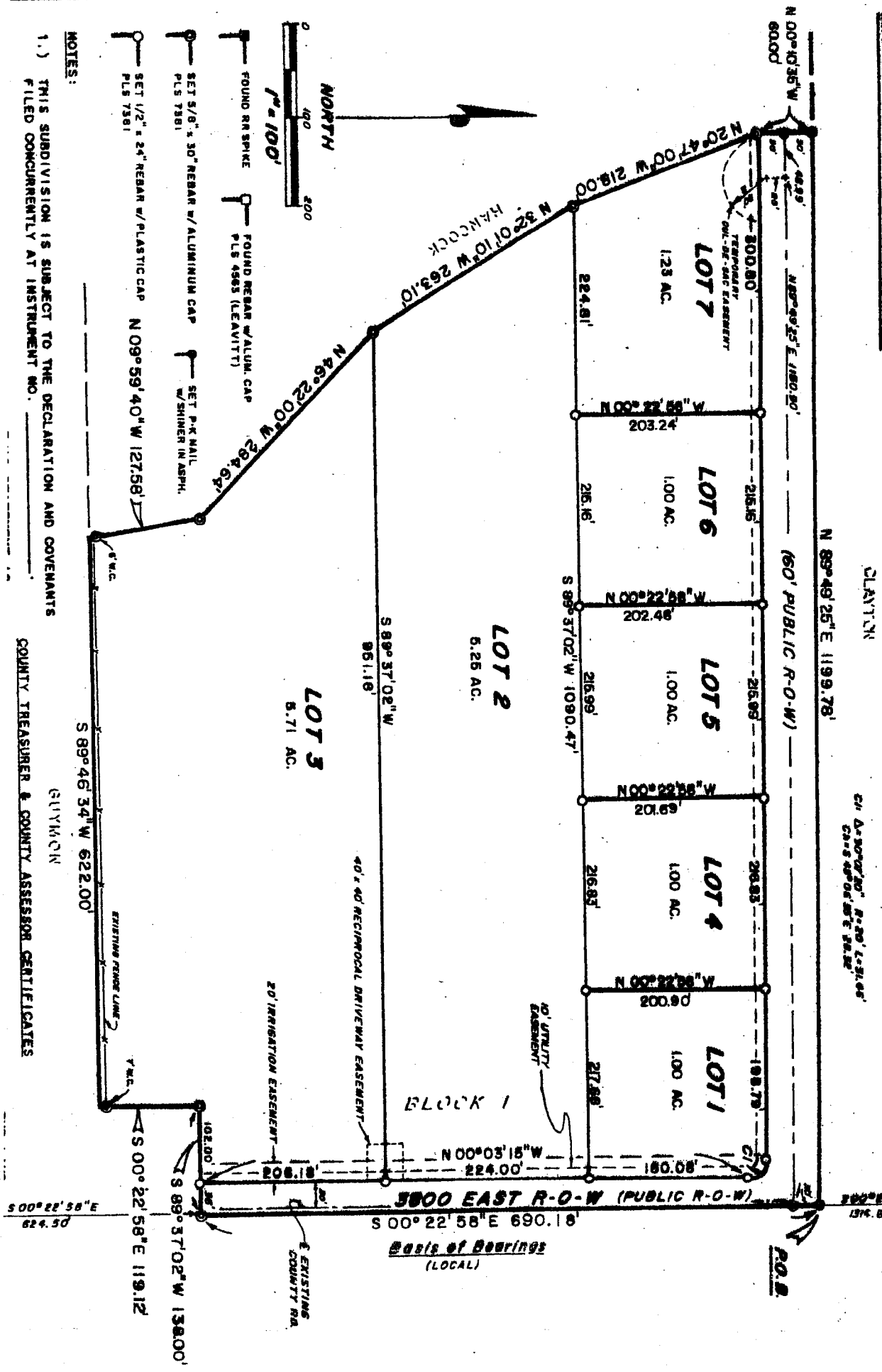


BERRETT ACRES

A SUBDIVISION IN SECTION 26, T4N, R38E B.M.

Jefferson County, Idaho



CLAYTON

N 89° 49' 25" E 1199.78'

CP 4-30-07-02, P-20 (L-31-05)
Case 4900-07-02, 03, 04

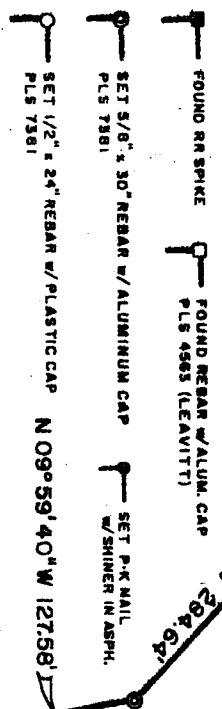
23 24
25 26
CP 8 P 00 20674

- NOTES:
- THIS SUBDIVISION IS SUBJECT TO THE DECLARATION AND COVENANTS FILED CONCURRENTLY AT INSTRUMENT NO. _____

COUNTY TREASURER & COUNTY ASSESSOR CERTIFICATES

GUYMON

S 89° 46' 34" W 622.00'



Basis of Bearings (LOCAL)

3800 EAST R-O-W (PUBLIC R-O-W)

40' x 40' RECIPROCAL DRIVEWAY EASEMENT

20' IRRIGATION EASEMENT

EXISTING COUNTY RA

EXISTING FENCE LINE

Y.W.L.

102.00'

S 00° 22' 58" E 119.12'

S 89° 37' 02" W 158.00'

S 00° 22' 58" E 622.50'

224.00'

134.68'

134.68'

134.68'

134.68'