

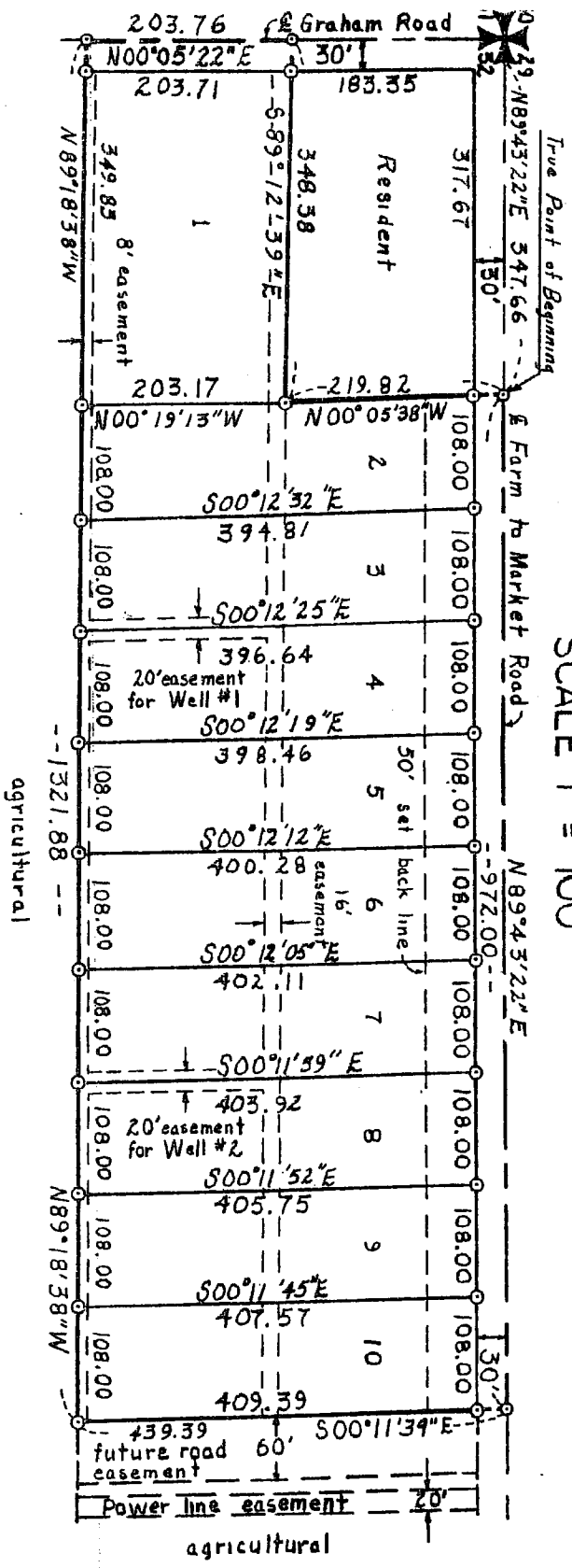
CEDAR ESTATES SUBDIVISION

Jefferson County, Idaho

Township 4 North, Range 39 East, B. M., Section 32

Division No. 1

SCALE 1" = 100'



Note:
The distance between any sewer drain field or sewer system and the existing wells must be at least 150' feet unless otherwise approved by the State Health Department.

While this is a photographic reproduction of the recorded plat, the Company assumes no liability for variations, if any, with a re-survey.

FIRST AMERICAN TITLE COMPANY
Idaho Falls, Idaho 83401