

Clark Country Estates Subdivision Jefferson County, Idaho Sec. 27

Township 4 North, Range 39 East of Boise Meridian

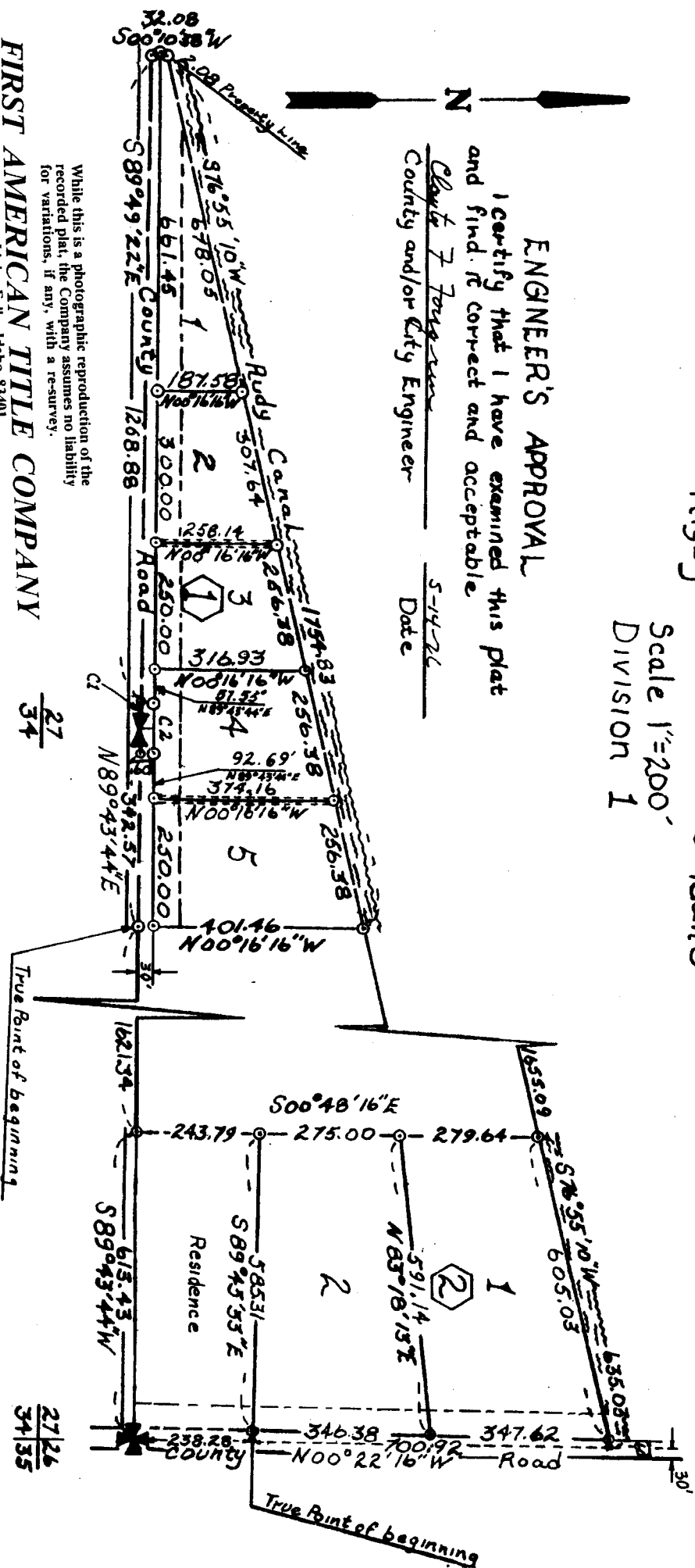
Lyle I. Thompson
Rigby ~ Consulting Engineer
~ Idaho

Scale 1"=200'
Division 1

ENGINEER'S APPROVAL

I certify that I have examined this plat
and find it correct and acceptable

Clayton F. Ferguson
County and/or City Engineer Date 5-14-26



FIRST AMERICAN TITLE COMPANY
Idaho Falls, Idaho 83401

$\frac{27}{34}$

$\frac{27}{26}$
 $\frac{34}{35}$

While this is a photographic reproduction of the
recorded plat, the Company assumes no liability
for variations, if any, with a re-survey.