

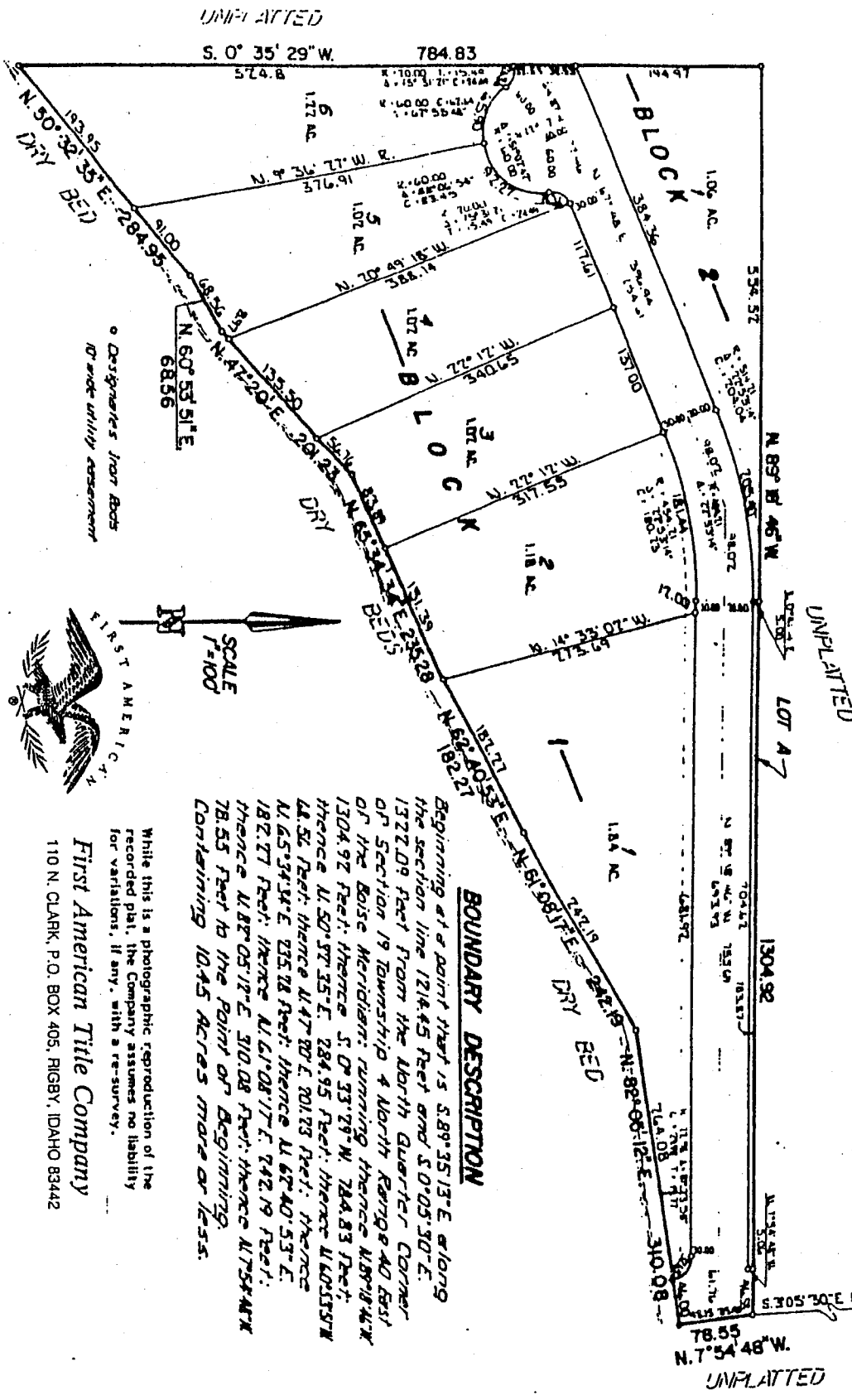
# GOOSEWOUND WATERFURROW

A PORTION OF THE S.W.1/4 N.E.1/4 OF SECTION 19 T. 4 N. R. 40 E. B. M.

JEFFERSON COUNTY, IDAHO  
 ELLSWORTH ENGINEERING, INC  
 IDAHO FALLS, IDAHO

1/4 COR. SEC. 19  
 T. 4 N. R. 40 E. B. M.

1/4 COR. SEC. 19  
 T. 4 N. R. 40 E. B. M.



### BOUNDARY DESCRIPTION

Beginning at a point that is S. 89° 35' 13" E. along the section line 1214.45 Feet and S. 0° 05' 30" E. 1322.09 Feet from the North Quarter Corner of Section 19 Township 4 North Range 40 East of the Boise Meridian; running thence N. 89° 18' 44" W. 1304.92 Feet; thence S. 0° 33' 29" W. 784.83 Feet; thence N. 50° 32' 35" E. 284.95 Feet; thence N. 60° 53' 54" E. 235.78 Feet; thence N. 67° 40' 53" E. 182.07 Feet; thence N. 61° 08' 17" E. 242.19 Feet; thence N. 88° 05' 12" E. 310.08 Feet; thence N. 75° 54' 48" W. 78.55 Feet to the Point of Beginning. Containing 10.45 Acres more or less.

While this is a photographic reproduction of the recorded plat, the Company assumes no liability for variations, if any, with a re-survey.

First American Title Company  
 110 N. CLARK, P.O. BOX 405, RIGBY, IDAHO 83442



SCALE  
 1"=100'

Designates Iron Posts  
 10 wide utility easement

UNPLATTED  
 S. 0° 35' 29" W. 784.83

UNPLATTED

UNPLATTED