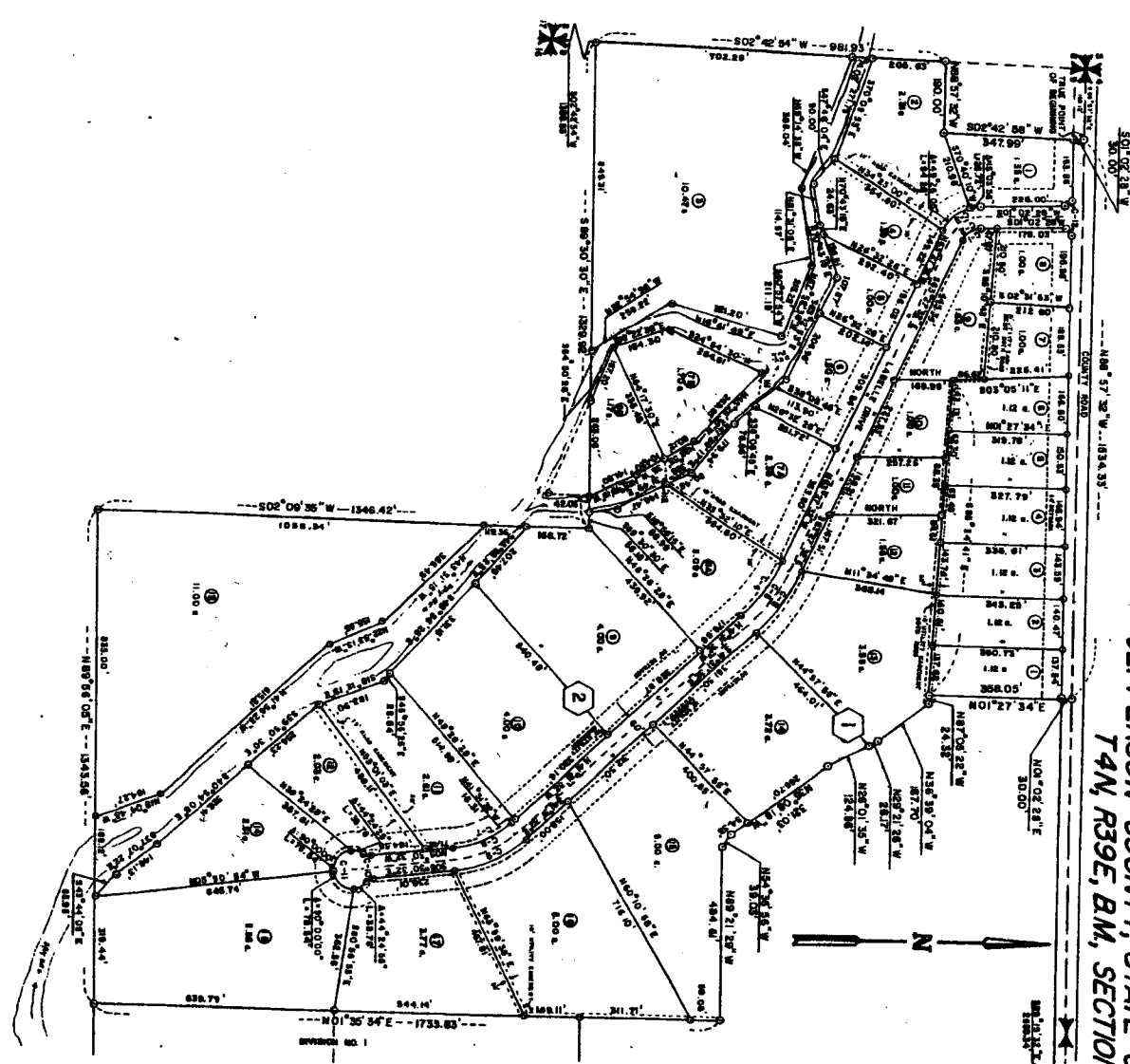


THE COTTONWOODS SUBDIVISION

DIVISION No. 2
JEFFERSON COUNTY, STATE OF IDAHO
T4N, R39E, BM, SECTION 9



THOMPSON ENGINEERING, INC.
 LYLE I. THOMPSON CONSULTING ENGINEER
 RIGBY ~ IDAHO

While this is a photographic
 reproduction of the recorded
 plat, the Company assumes no
 liability for variations, if
 any, with a re-survey.

First American Title Co.
 RIGBY, IDAHO