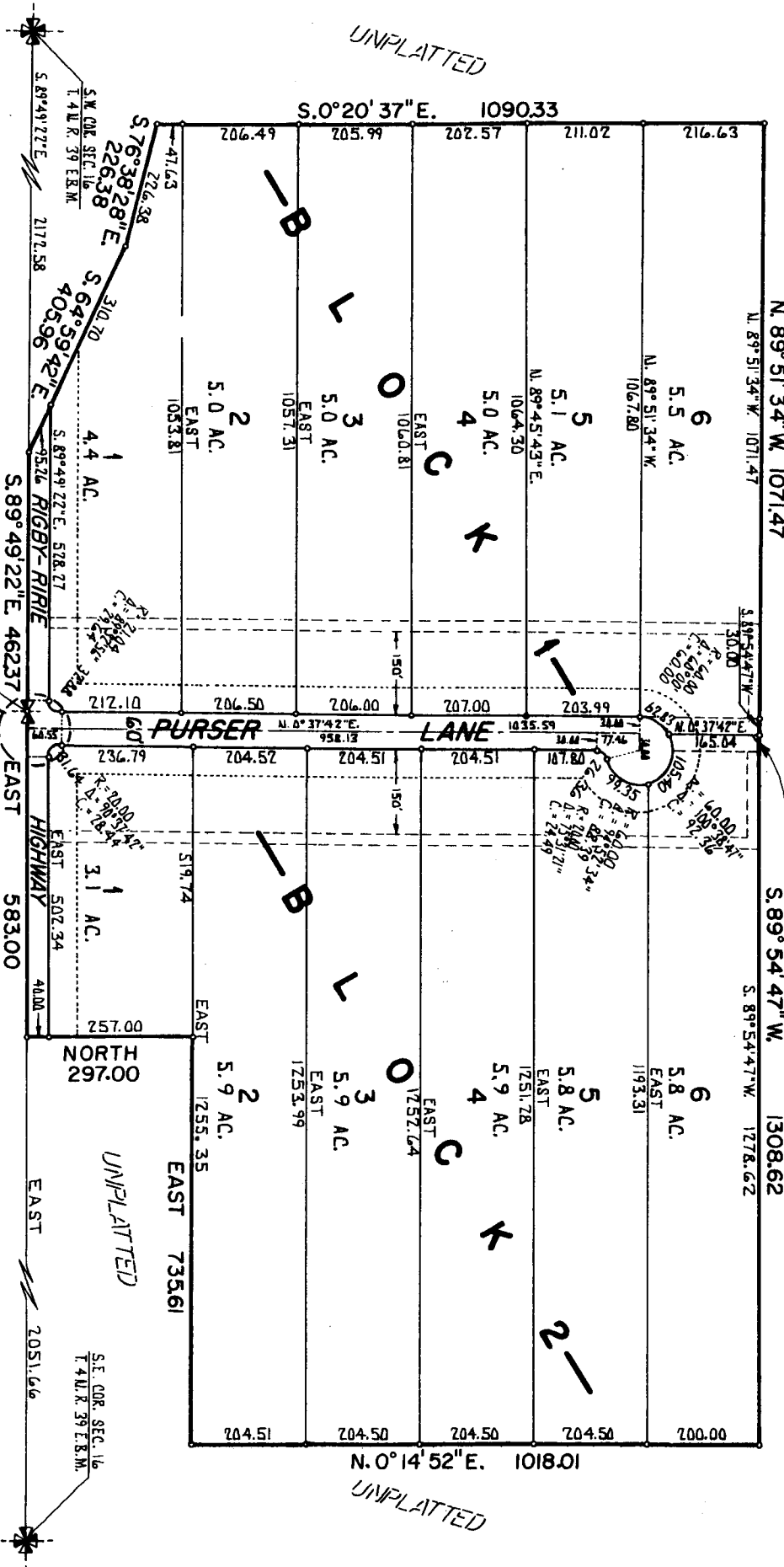


GOWNEY AIR ESTATES

JEFFERSON COUNTY, IDAHO
 A PORTION OF THE S.1/2 OF SEC. 16 T.4N.R.39 E.B.M.
 ELLSWORTH ENGINEERING INC.
 IDAHO FALLS, IDAHO

NOTES:
 * DESIGNATES IRON RODS
 --- UTILITY EASEMENTS 20' WIDE
 UNLESS OTHERWISE NOTED.
 - - - - - 50' BUILDING SETBACK LINE
 ALL ACRES APPROXIMATE

SCALE 1" = 200'



While this is a photographic reproduction of the recorded plat, the Company assumes no liability for variations, if any, with a re-survey.

LAND TITLE CO.
 Idaho Falls, Idaho

SEE
 DETAIL

