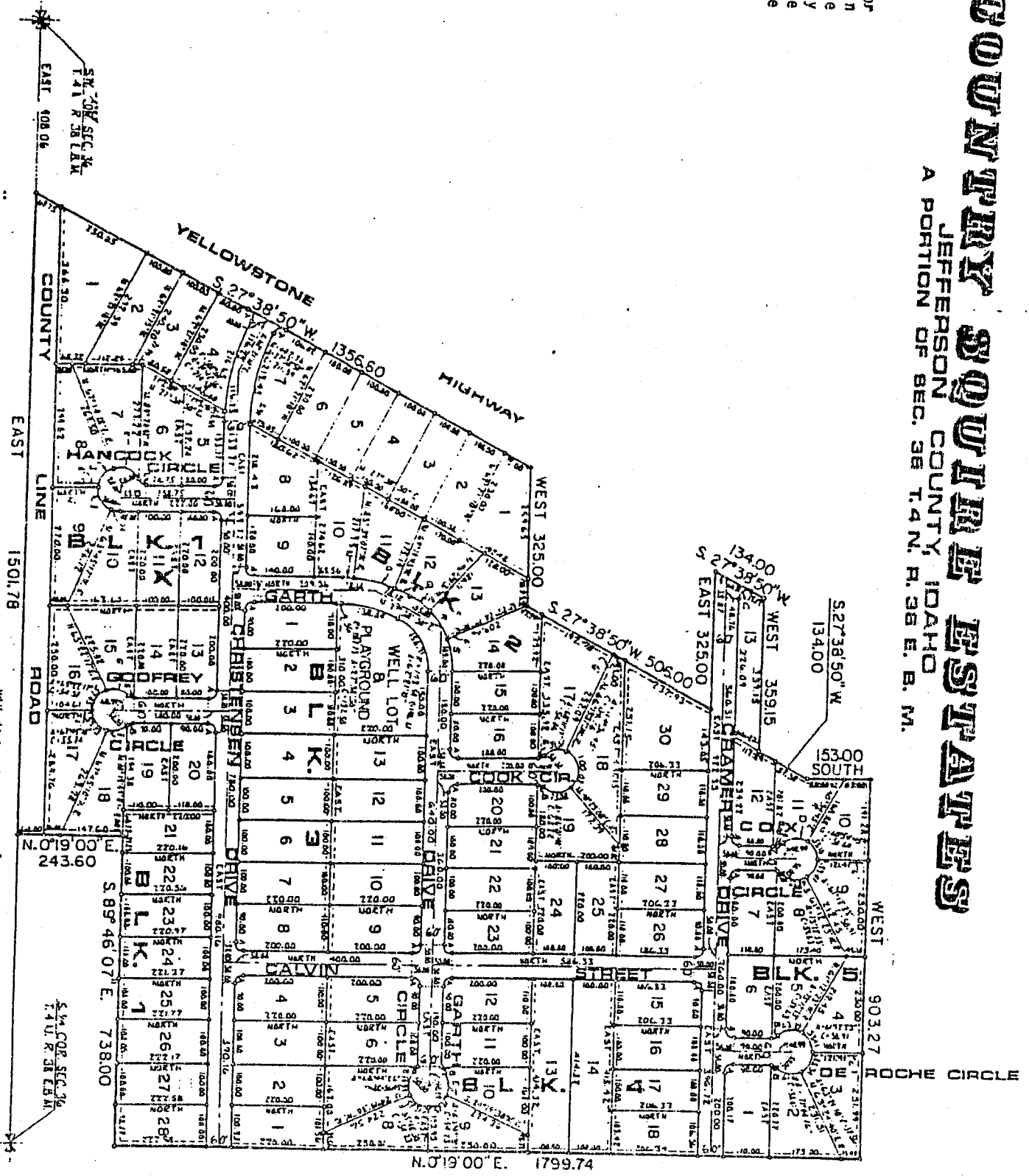


COUNTELY SQUAT RIGHTS ESTABLISHMENTS

JEFFERSON COUNTY, IDAHO
A PORTION OF SEC. 36 T.4 N. R. 36 E. B. M.

This sketch is made solely for the purpose of assisting in locating the premises. The Company assumes no liability for alleged loss or damage which may result from reliance on this map.



First American Title Company

While this is a photographic reproduction of the original plat, the Company assumes no liability for variations, if any, with a resurvey.