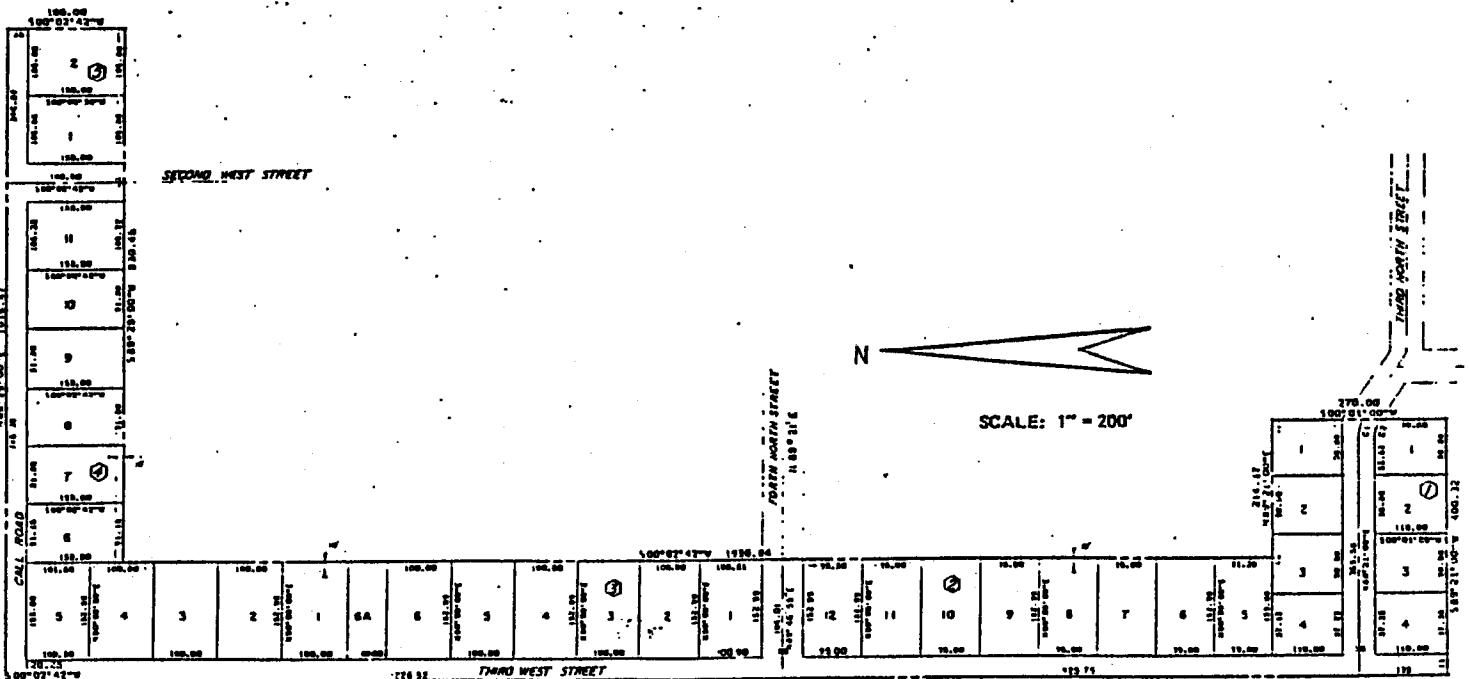


DELBERT CALL SUBDIVISION No.2

Amended Plat

JEFFERSON COUNTY, IDAHO
 Part of
 NW 1/4, Sec 18, T 4N, R39 E, B.M.
 and
 NE 1/4, Sec 13, T 4N, R38E, B.M.

FP FORSGREN, PERKINS and ASSOCIATES, P.A.
 CONSULTING ENGINEERS
 REXBURG-POCATELLO-CACHE VALLEY-SALT LAKE CITY



While this is a photographic reproduction of the recorded plat, the Company assumes no liability for variations, if any, with a re-survey.



First American Title Company
 110 N. CLARK, P.O. BOX 405, RIGBY, IDAHO 83442