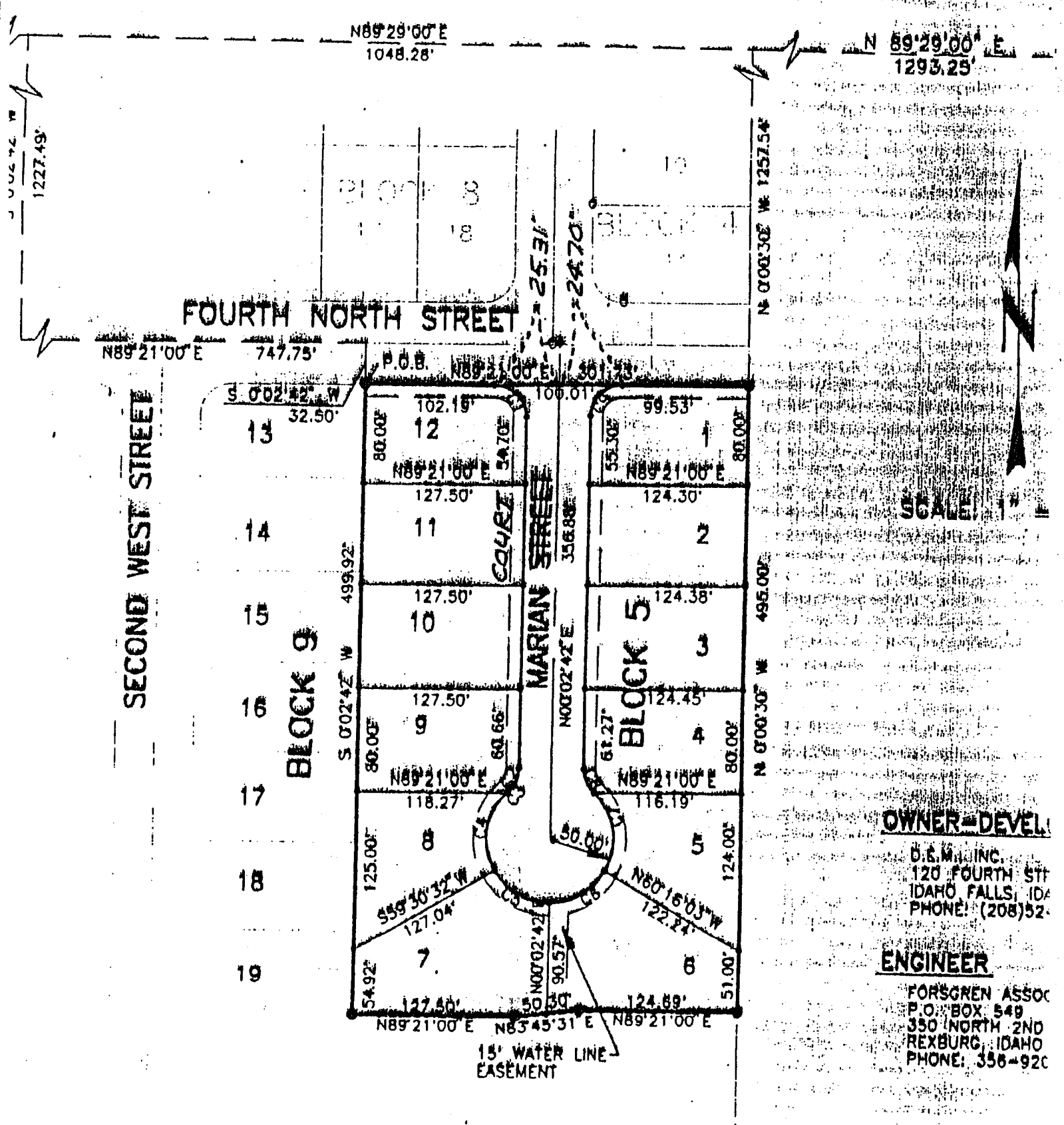


AMENDED PLAT PORTIONS OF BLOCKS 5 & 9
 DELBERT CALL SUBDIVISION NO. 3
 SECTION 18 T. 4 N., R. 39 E., B.M.
 CITY OF RIGBY, JEFFERSON COUNTY, IDAHO



SCALE: 1" = 100'

OWNER-DEVELOPER

D.E.M. INC.
 120 FOURTH ST
 IDAHO FALLS, IDAHO
 PHONE: (208)52-

ENGINEER

FORSYTH ASSOC
 P.O. BOX 549
 350 NORTH 2ND
 REXBURG, IDAHO
 PHONE: 356-920

15' WATER LINE
 EASEMENT