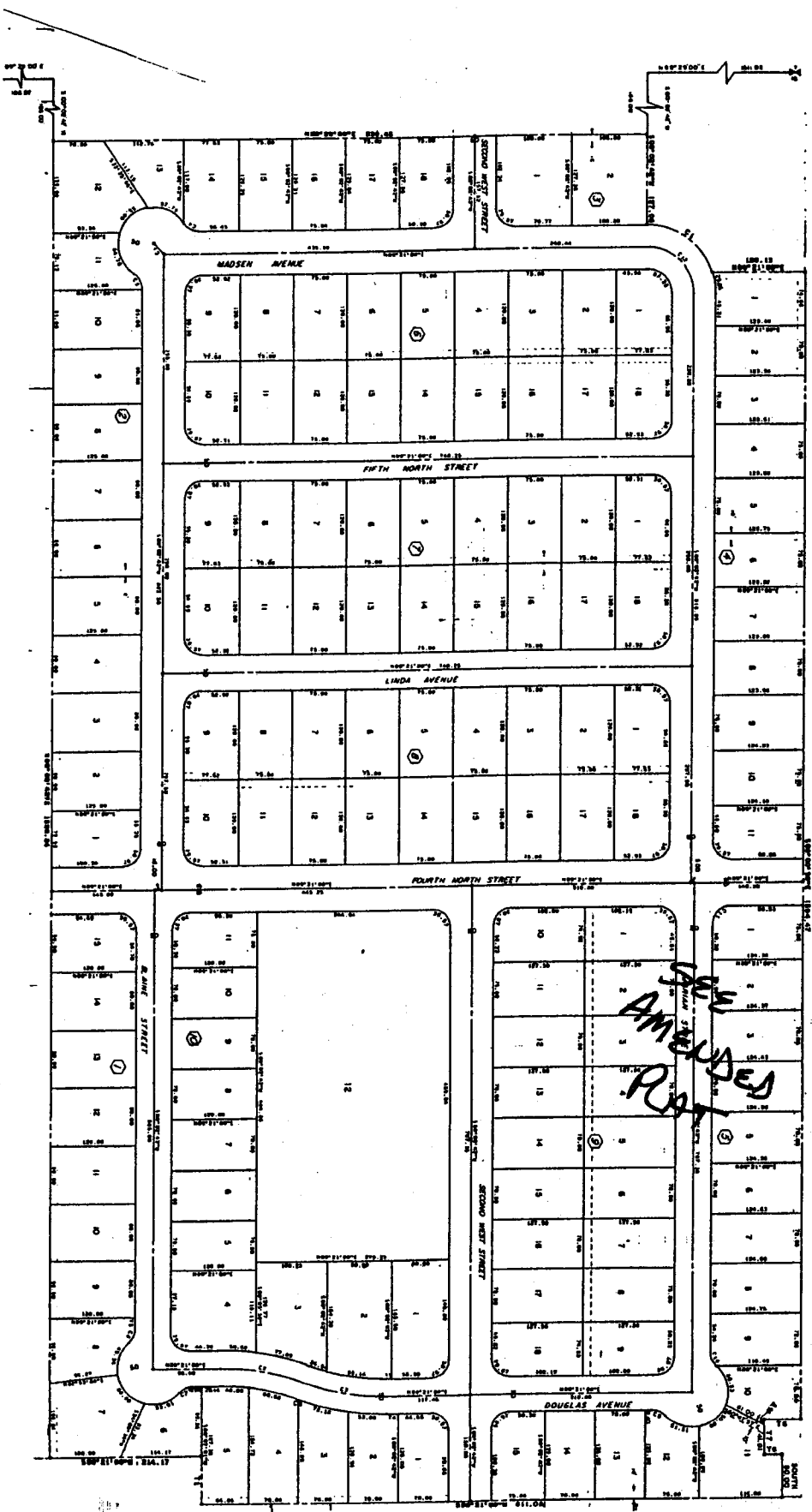


DELBERT CALL SUBDIVISION No.3

JEFFERSON COUNTY, IDAHO
 Part of
 NW 1/4, Section 18, T4N, R.39 E., B.M.



First American Tile Company
 110 N. CLARK, P. O. BOX 405, RIGBY, IDAHO 83442

While this is a photographic reproduction of the recorded plat, the Company assumes no liability for variations, if any, with a re-survey.