

# 1ST AMENDED PLAT OF THE EAGLE SUBDIVISION

DIVISION NO. 1  
JEFFERSON COUNTY, IDAHO  
T4N. R39E. B.M. SECTION 10  
SCALE 1" = 100 FEET

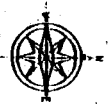
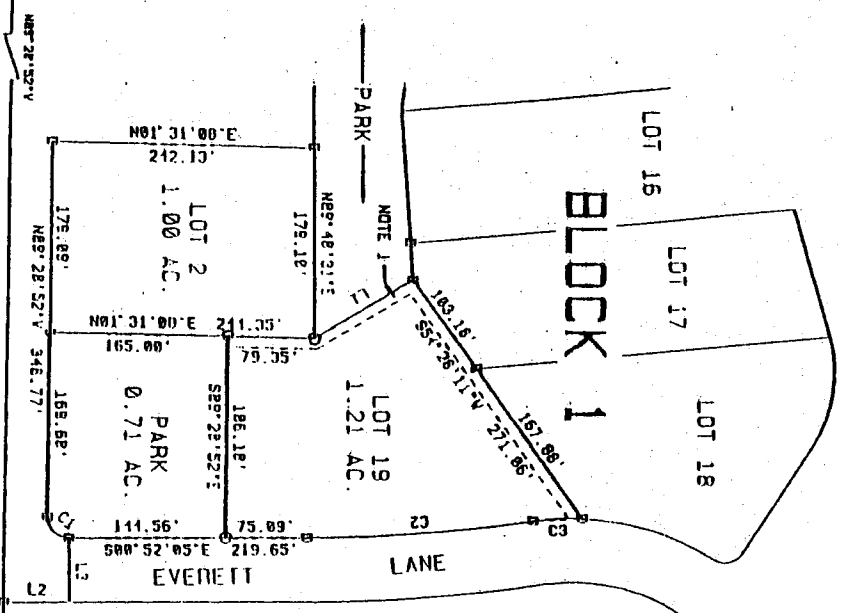
## RECORDER'S CERTIFICATE

I HEREBY CERTIFY THAT THE FOREGOING AMENDED PLAT OF THE EAGLE SUBDIVISION IN JEFFERSON COUNTY, STATE OF IDAHO WAS FILED FOR RECORDING IN THE OFFICE OF THE RECORDER FOR JEFFERSON COUNTY, IDAHO ON THIS 20 DAY OF October 1998 AT 10:00 INSTRUMENT NUMBER 283707

Archie M. Keller  
JEFFERSON COUNTY RECORDER



FD. IRON ROD  
INST. # 264444



400 NORTH  
BASIS OF BEARING

FD. IRON ROD  
INST. # 185576

LINE NO.	BEARING	DISTANCE
11	N32°18'29"V	188.46'
12	S89°52'45"E	51.95'
13	S87°07'55"V	58.89'

### CURVE DATA

CURVE NO.	DELTA	RADIUS	ARC	CHORD	TANGENT
C1	91°22'13"	28.82'	21.190'	28.62'	28.49'
C2	88°26'13"	1432.78'	218.198'	218.75'	105.69'
C3	117°08'34"	226.82'	45.222'	45.28'	22.75'

NOTES:  
NOTE #1: 10' EASEMENT

### LEGEND

○ 1/2" X 24" IRON ROD WITH CAP # 854  
□ 1/2" X 24" IRON ROD WITH CAP # 827  
- - - 10' EASEMENT

THOMPSON ENGINEERING INC.  
CONSULTING ENGINEERS  
RIGBY, IDAHO 83442



SCALE

## AMENDED PLAT

TOWNSHIP 4 NORTH, RANGE 39 EAST B.M.  
SECTION 10, JEFFERSON COUNTY, IDAHO

PROJECT: JAMES EVERETT  
JOB NUMBER: 98012

DATE: 04-17-98  
SURVEYOR: L.I.T.  
DRAWN BY: K.L.T.  
CHECKED BY: L.I.T.

SCALE  
1" = 100 FEET

SHEET 2 OF 2

Revised to 283707