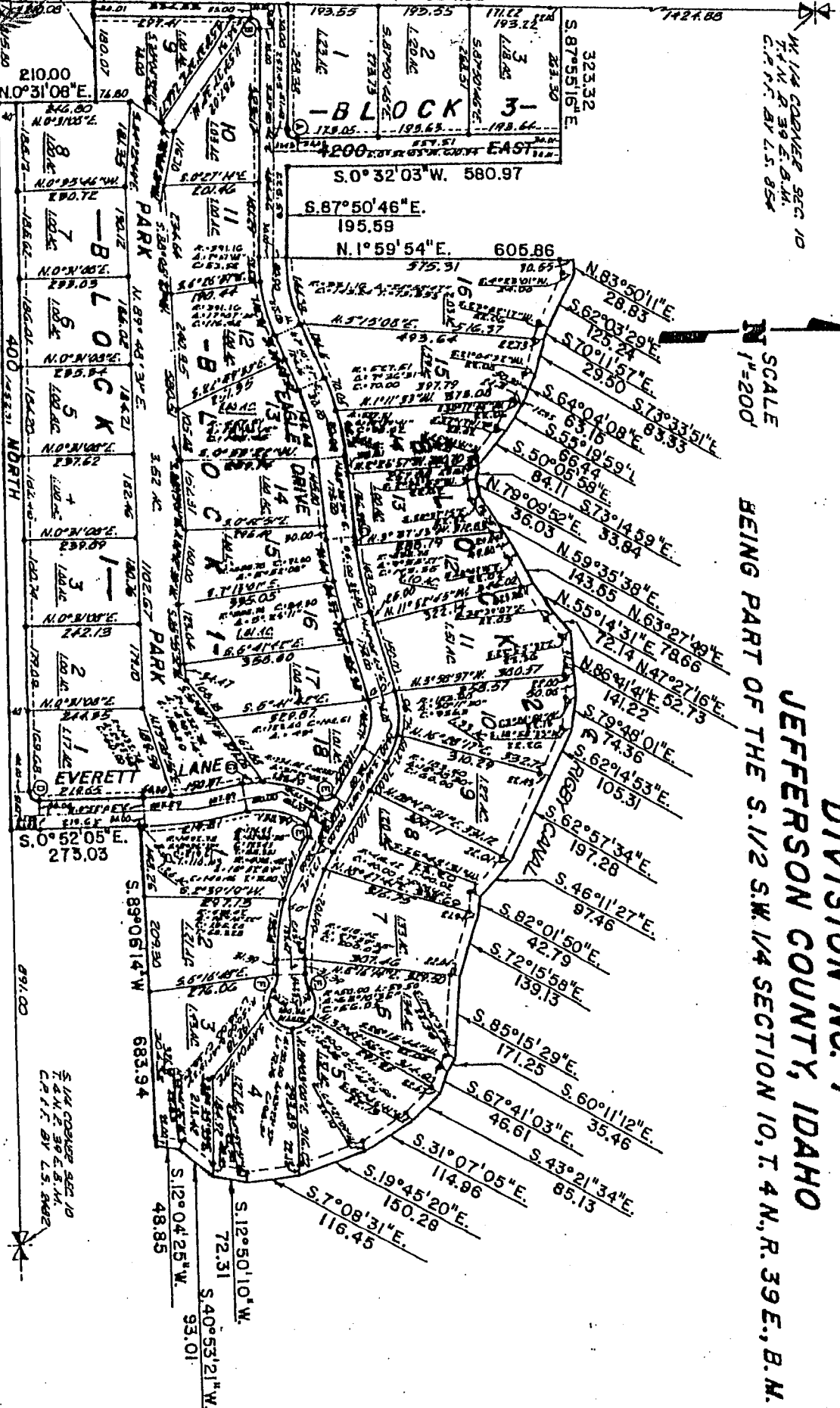




4200 EAST
N. 2° 04' 44" E.

2629.85

994.92



SCALE
1"=200'

BEING PART OF THE S. 1/2 S.W. 1/4 SECTION 10, T. 4 N., R. 39 E., B.M.

EAGLE SUBDIVISION DIVISION NO. 1 JEFFERSON COUNTY, IDAHO

N. 89° 28' 52" W. 1534.38
N. 89° 28' 52" W. 2641.18 SECTION LINE - BASIS OF BEARINGS

CURVE	RAIUS	DELTA	LENGTH	CHORD	TANGENT
1	20.00	91° 37' 11"	31.98	26.82	20.574
2	20.00	90° 04' 30"	31.44	26.50	20.028
3	20.00	91° 37' 11"	31.98	26.82	20.574
4	20.00	90° 04' 30"	31.44	26.50	20.028

IRRIGATION WATER RIGHTS

The irrigation water rights for the property included in this plat are in force. The water right for the property included in this plat has been determined and the same is hereby certified to the health department district.

HEALTH DEPARTMENT CERTIFICATE