

FIESTA FARMS

DIVISION NO. 1

JEFFERSON COUNTY, IDAHO

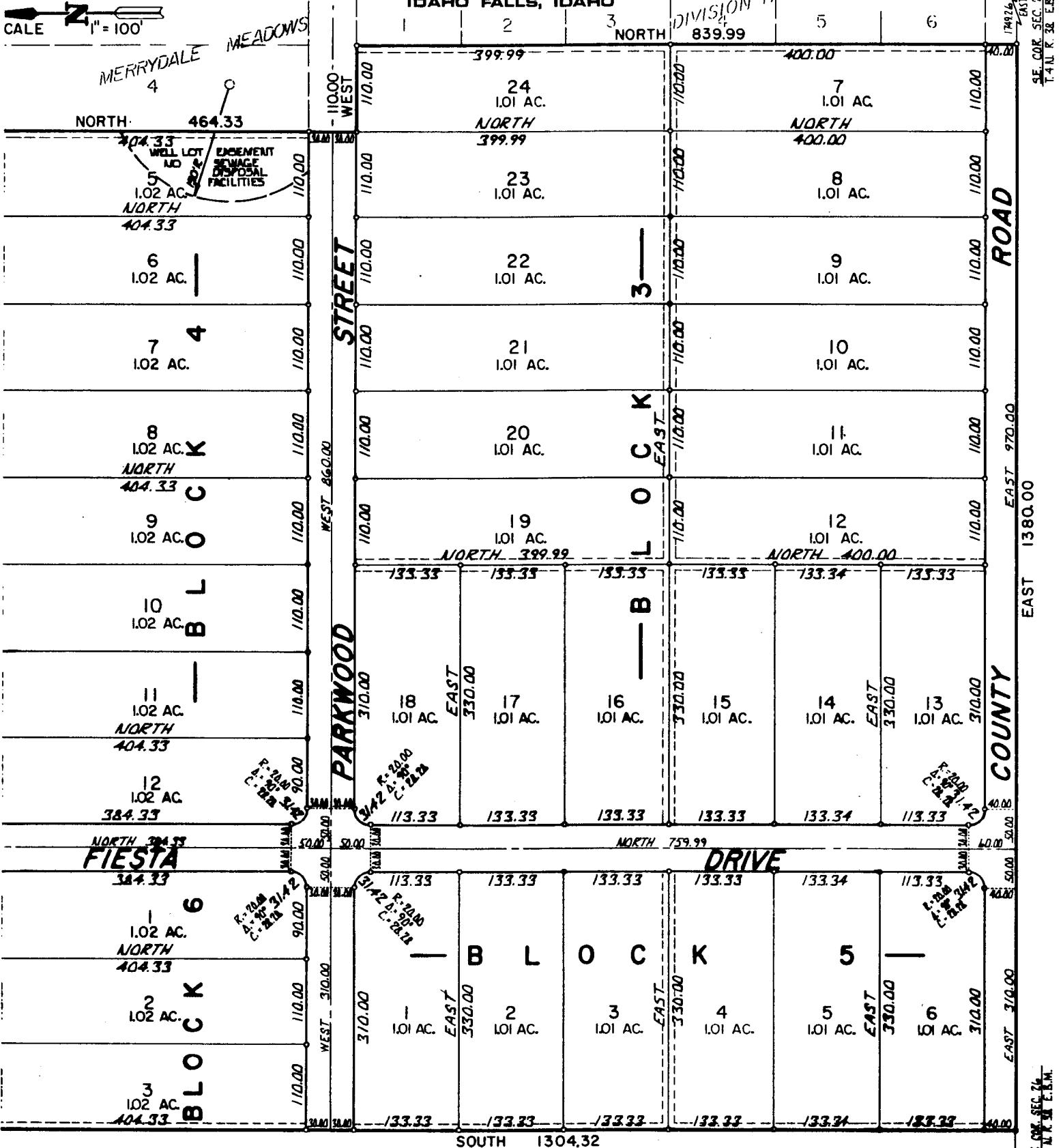
ELLSWORTH ENGINEERING, INC.
IDAHO FALLS, IDAHO

NOTES

o DESIGNATES IRON RODS
EASEMENTS & UNLESS
OTHERWISE NOTED.

PORTION OF SEC. 26
T. 4 N. R. 38 E. B. M.

SCALE 1" = 100'



I certify that I have examined this plat and have found it to be analytically correct and acceptable.

By: Brent G. Harris, Examining Engineer Date: 12-04-78