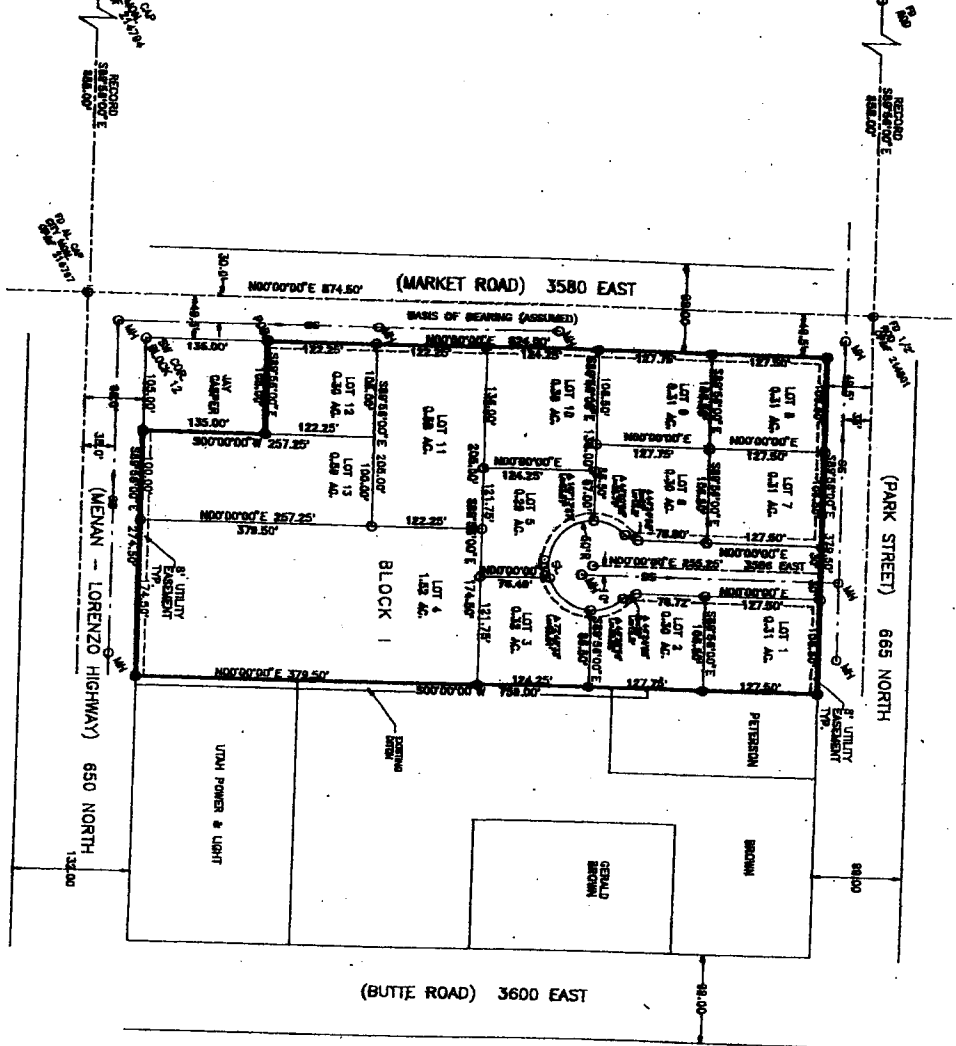
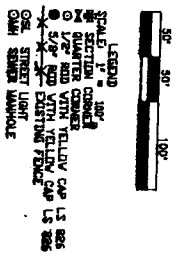


GUNDERSON SUBDIVISION

AN ADDITION TO THE
CITY OF MENAN, JEFFERSON CO., IDAHO
BEING A PORTION OF BLOCK 12 OF THE ORIGINAL MENAN TOWNSITE
LYING IN SEC. 33, T5N, R38E, B. M., JEFFERSON CO., ID.



RECORDED CERTIFICATE
I, JOHN P. BARNES, A REGISTERED LAND SURVEYOR
IN THE STATE OF IDAHO, LICENSE NO. 200, DO HEREBY
CERTIFY THAT I HAVE SURVEYED THE ABOVE DESCRIBED
TRACT AND THE DIMENSIONS AND REPRESENTATIONS
OF THE SAME ARE TRUE AND CORRECT.
JOHN P. BARNES



BOUNDARIES
OF NEIGHBORS
AND ADJACENT
LANDS
AS SHOWN
ON THE
PLAT
ARE
AS
SHOWN
ON
THE
PLAT
AND
ARE
NOT
TO
BE
CONSIDERED
AS
WARRANTING
THE
ACCURACY
OF
THE
SAME
EXCEPT
AS
TO
THE
DIMENSIONS
AND
BEARINGS
HEREON
SHOWN.



APPROVED FOR RECORD
ON THIS DAY OF MAY, 1920, AT THE CITY OF MENAN, IDAHO, I, JOHN P. BARNES, A REGISTERED LAND SURVEYOR, DO HEREBY CERTIFY THAT I HAVE SURVEYED THE ABOVE DESCRIBED TRACT AND THE DIMENSIONS AND REPRESENTATIONS OF THE SAME ARE TRUE AND CORRECT.
DATE 5-1-20
JOHN P. BARNES

J. P. BARNES & ASSOC.
133 W. 1ST. S. BOISE, IDAHO (200) 384-6604

RECORDED CERTIFICATE
I, JOHN P. BARNES, A REGISTERED LAND SURVEYOR
IN THE STATE OF IDAHO, LICENSE NO. 200, DO HEREBY
CERTIFY THAT I HAVE SURVEYED THE ABOVE DESCRIBED
TRACT AND THE DIMENSIONS AND REPRESENTATIONS
OF THE SAME ARE TRUE AND CORRECT.
JOHN P. BARNES

308123

PROPERTY DESCRIPTION
A PORTION OF THE WEST 3740 FEET OF BLOCK 12 OF THE ORIGINAL
MENAN TOWNSITE, JEFFERSON COUNTY, IDAHO

APPROVED FOR RECORD
ON THIS DAY OF MAY, 1920, AT THE CITY OF MENAN, IDAHO, I, JOHN P. BARNES, A REGISTERED LAND SURVEYOR, DO HEREBY CERTIFY THAT I HAVE SURVEYED THE ABOVE DESCRIBED TRACT AND THE DIMENSIONS AND REPRESENTATIONS OF THE SAME ARE TRUE AND CORRECT.
DATE 5-1-20
JOHN P. BARNES



APPROVED FOR RECORD
ON THIS DAY OF MAY, 1920, AT THE CITY OF MENAN, IDAHO, I, JOHN P. BARNES, A REGISTERED LAND SURVEYOR, DO HEREBY CERTIFY THAT I HAVE SURVEYED THE ABOVE DESCRIBED TRACT AND THE DIMENSIONS AND REPRESENTATIONS OF THE SAME ARE TRUE AND CORRECT.
DATE 5-1-20
JOHN P. BARNES

RECORDED CERTIFICATE
I, JOHN P. BARNES, A REGISTERED LAND SURVEYOR
IN THE STATE OF IDAHO, LICENSE NO. 200, DO HEREBY
CERTIFY THAT I HAVE SURVEYED THE ABOVE DESCRIBED
TRACT AND THE DIMENSIONS AND REPRESENTATIONS
OF THE SAME ARE TRUE AND CORRECT.
JOHN P. BARNES

RECORDED CERTIFICATE
I, JOHN P. BARNES, A REGISTERED LAND SURVEYOR
IN THE STATE OF IDAHO, LICENSE NO. 200, DO HEREBY
CERTIFY THAT I HAVE SURVEYED THE ABOVE DESCRIBED
TRACT AND THE DIMENSIONS AND REPRESENTATIONS
OF THE SAME ARE TRUE AND CORRECT.
JOHN P. BARNES