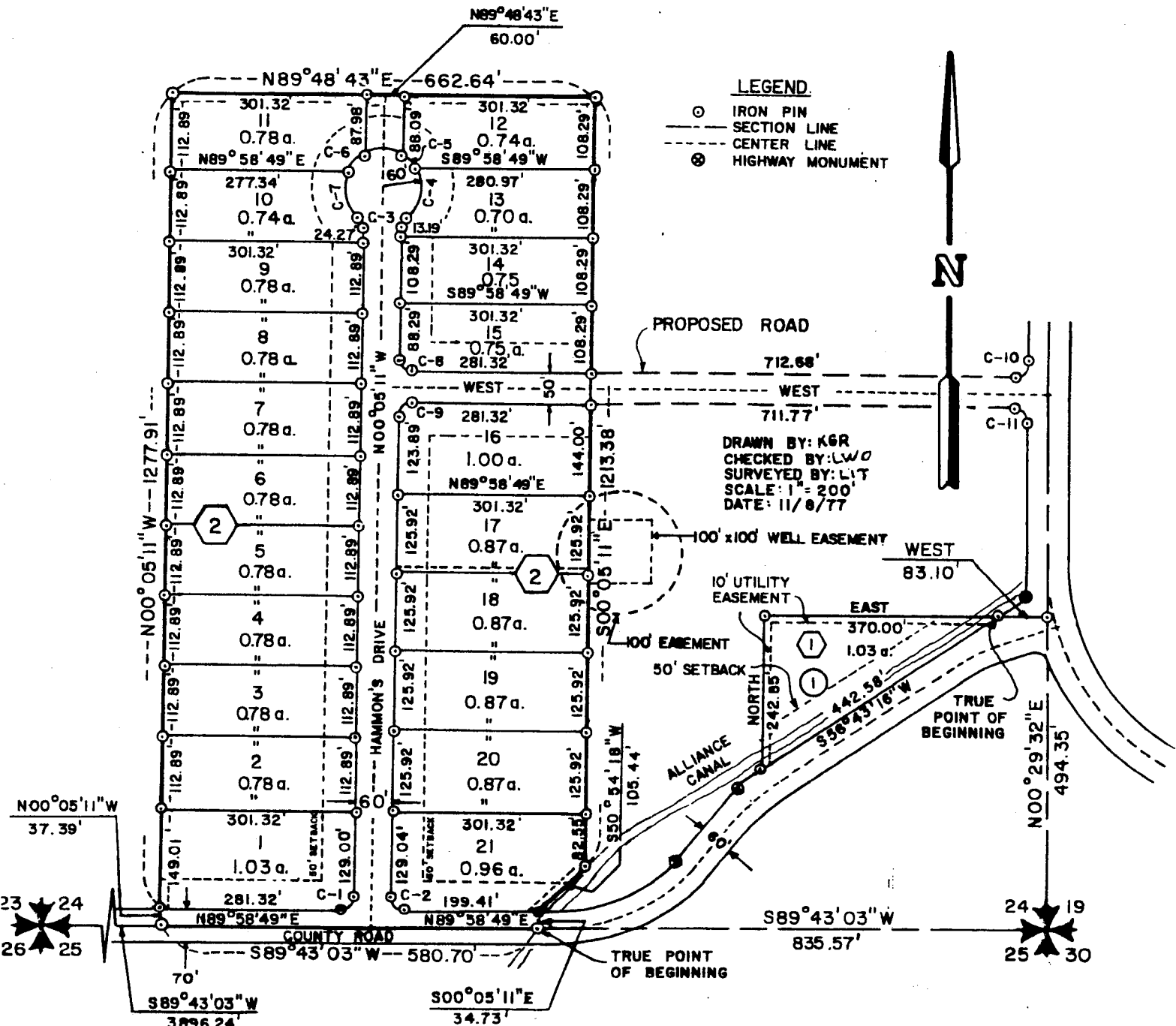


HAMMON'S COUNTRY ESTATES SUBDIVISION DIVISION NO. 1 JEFFERSON COUNTY, IDAHO T4N, R38E, B.M., SEC. 24 SCALE: 1"=200'



While this is a photographic reproduction of the recorded plat, the Company assumes no liability for variations, if any, with a re-survey.

FIRST AMERICAN TITLE COMPANY