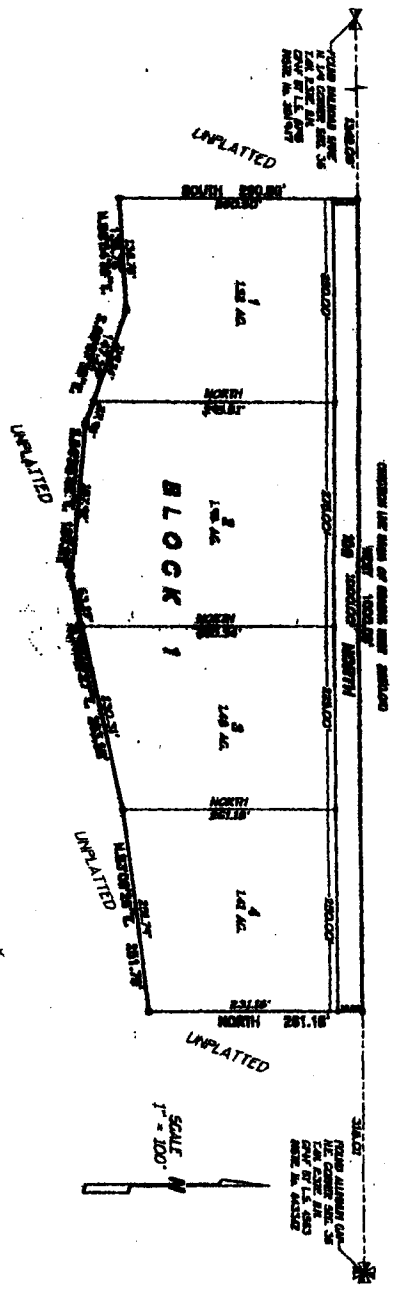


HANSEN BEND
DIVISION NO. 1
 PART OF THE 1/4 SECTION 30 T4N R37E R1E
 JEFFERSON COUNTY, IDAHO



THIS PLAT IS MADE IN ACCORDANCE WITH THE PROVISIONS OF THE PLAT ACT OF 1909 AND THE PLAT ACT OF 1939.

THIS PLAT IS MADE IN ACCORDANCE WITH THE PROVISIONS OF THE PLAT ACT OF 1909 AND THE PLAT ACT OF 1939.

PLANNING AND ZONING COMMISSION
 I have read the above plat and find it conforms to the provisions of the Plat Act of 1909 and the Plat Act of 1939.

LEGISLATIVE BOARD
 I have read the above plat and find it conforms to the provisions of the Plat Act of 1909 and the Plat Act of 1939.

REGULATORY BOARD
 I have read the above plat and find it conforms to the provisions of the Plat Act of 1909 and the Plat Act of 1939.

TREASURER AND ASSESSOR'S CERTIFICATE
 I have read the above plat and find it conforms to the provisions of the Plat Act of 1909 and the Plat Act of 1939.

RECORDS & CLERK'S CERTIFICATE
 I have read the above plat and find it conforms to the provisions of the Plat Act of 1909 and the Plat Act of 1939.

COUNTY ATTORNEY
 I have read the above plat and find it conforms to the provisions of the Plat Act of 1909 and the Plat Act of 1939.

AGRICULTURAL ADJUDICATOR
 I have read the above plat and find it conforms to the provisions of the Plat Act of 1909 and the Plat Act of 1939.

OWNER'S CERTIFICATE
 I, the undersigned, do hereby certify that the above plat is a true and correct copy of the original plat as filed in the office of the County Clerk of Jefferson County, Idaho.

PLANNING SURVEYOR'S CERTIFICATE
 I have read the above plat and find it conforms to the provisions of the Plat Act of 1909 and the Plat Act of 1939.

SURVEYOR'S CERTIFICATE
 I have read the above plat and find it conforms to the provisions of the Plat Act of 1909 and the Plat Act of 1939.

