

# HANSEN ESTATES

JEFFERSON COUNTY, IDAHO

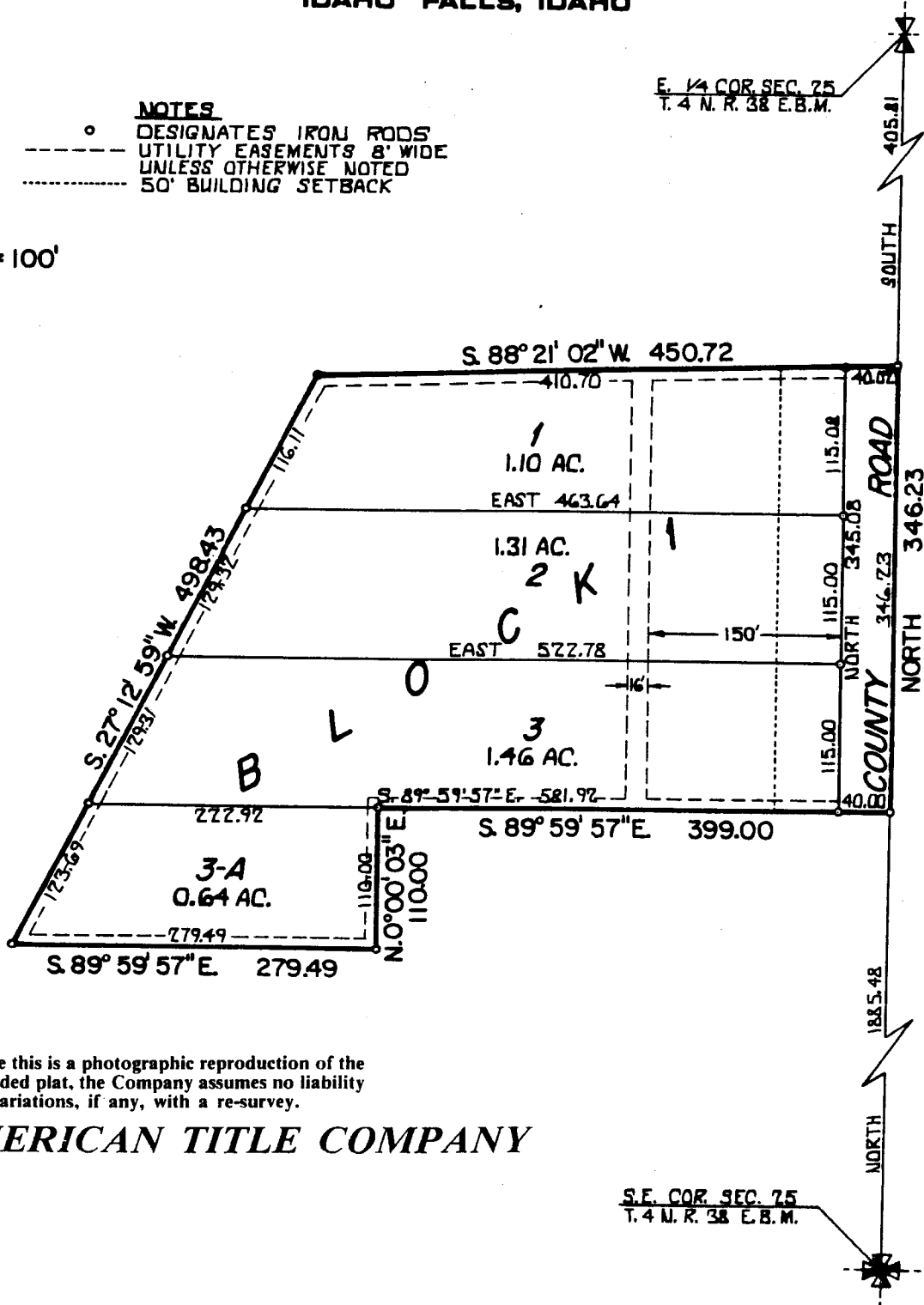
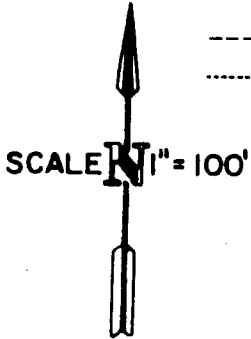
A PORTION OF THE S.E. 1/4 OF SECTION 25 T. 4 N. R. 38 E. B.M.

ELLSWORTH ENGINEERING, INC.  
IDAHO FALLS, IDAHO

**NOTES**

- o DESIGNATES IRON RODS
- - - - - UTILITY EASEMENTS 8' WIDE
- · - · - · 50' BUILDING SETBACK

E. 1/4 COR. SEC. 25  
T. 4 N. R. 38 E. B.M.



While this is a photographic reproduction of the recorded plat, the Company assumes no liability for variations, if any, with a re-survey.

**FIRST AMERICAN TITLE COMPANY**

S.E. COR. SEC. 25  
T. 4 N. R. 38 E. B.M.