

# HERITAGE ESTATES

## DIVISION NO. 1

JEFFERSON COUNTY, IDAHO

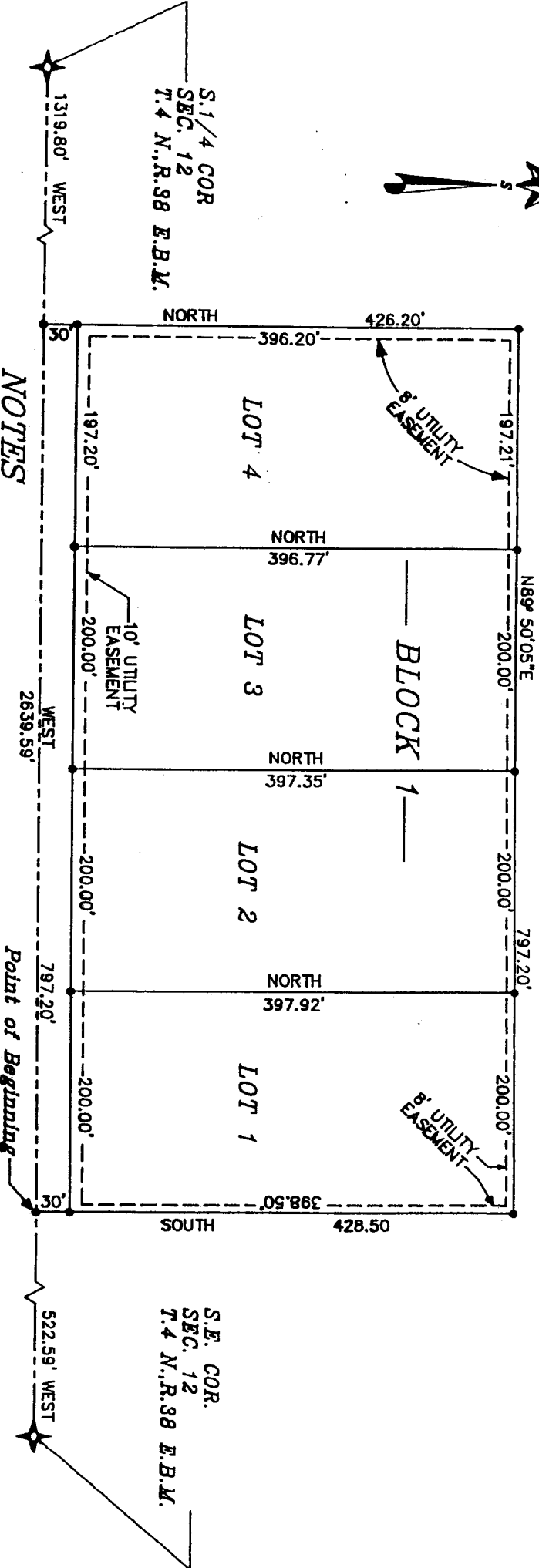
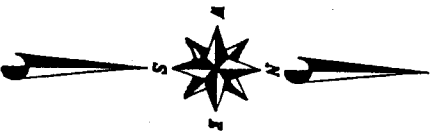
PART OF THE S.E. 1/4, OF SEC. 12, T.4 N., R.38 E.B.M.

SORENSEN ENGINEERING, P.A.  
CONSULTING ENGINEERS

SCALE: 1" = 100'

First American Title Company  
Rigby, Idaho 83442

While this is a photographic reproduction of the recorded plat, the Company assumes no liability for variations, if any, with a re-survey.



### NOTES

Indicates a 1/2" x 24" iron rod with a yellow plastic cap marked "I.S. 760".

a 10' wide utility easement is reserved along the street side of all lots.