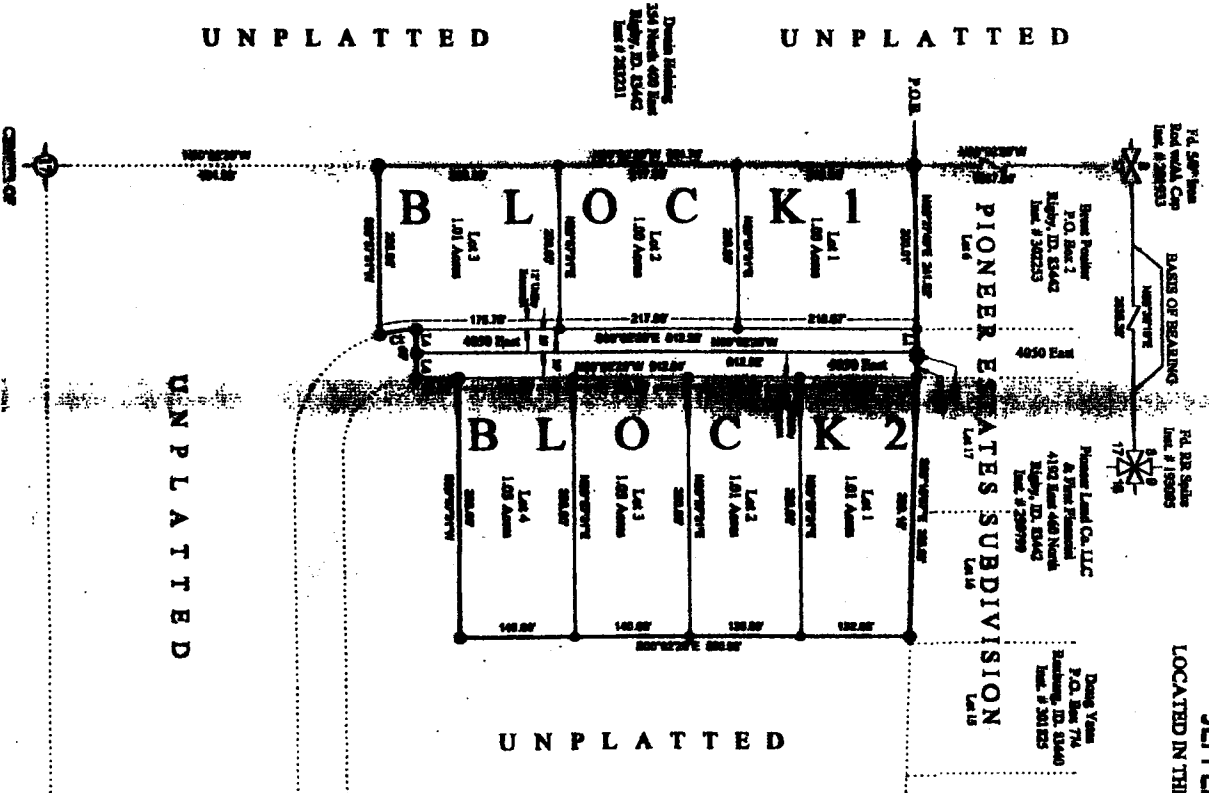


HIDDEN ACRES SUBDIVISION

DIVISION NO. 1
JEFFERSON COUNTY, IDAHO
LOCATED IN THE NE 1/4 OF SECTION 17, T4N R39E, B.M.



Line No.	Bearing	Distance
L1	N89°27'48"W	30.00'
L2	N89°27'48"W	11.57'
L3	N89°15'57"E	18.49'
L4	S89°57'31"W	30.00'

Legend
 ● See 50' x 30' Iron Rod W/Camp # 854
 ○ See 12" x 24" Iron Rod W/Camp # 854
 - - - - - Adjusted Property Line
 - - - - - Utility Easement

Curve No.	Date	Radius	Arc	Chord	Tangent
C1	17-09-94	150.00'	44.85'	44.71'	22.61'

NOTE 1: This subdivision falls within the 500 Year Flood Plain as per Map # 16081C871.
NOTE 2: This subdivision falls within the City of Rigby Impact Area.
NOTE 3: The Date of Recording was obtained from the Pioneer Easement Subdivision (Date: 8/28/2012).
NOTE 4: The intended use of this subdivision is for Residential Single Family Dwelling Units.

TE THOMPSON ENGINEERING, IN CONSULTING ENGINEERS
RIGBY, IDAHO 83442

FINAL PLAT

LOCATED IN THE NE 1/4 OF SECTION 17, TOWNE NORTH, RANGE 39 EAST, JEFFERSON COUNTY, IDAHO

Project Name: Hidden Acres Subdivision
 Job Number: 99016
 Date: May 12, 2000
 Scale: 1" = 40'