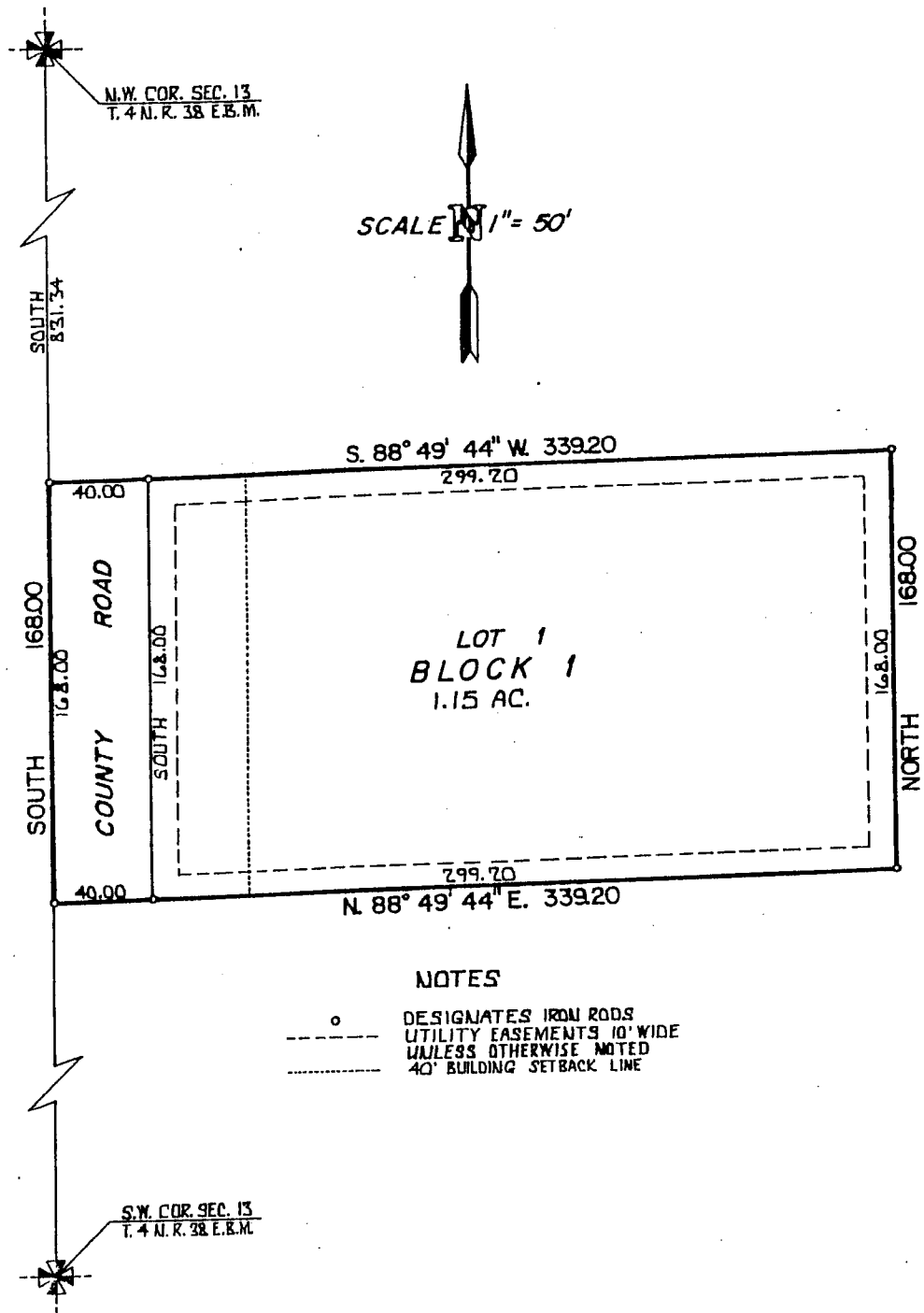


J.G.Z. SUBDIVISION

JEFFERSON COUNTY, IDAHO
A PORTION OF THE N.W. 1/4 OF SEC. 13 T. 4 N. R. 38 E. B. M.
ELLSWORTH ENGINEERING, INC.
IDAHO FALLS, IDAHO



FIRST AMERICAN TITLE COMPANY

While this is a photographic reproduction of the recorded plat, the Company assumes no liability for variations, if any, with a re-survey.

NOTES

- o DESIGNATES IRON RODS
- - - UTILITY EASEMENTS 10' WIDE
- UNLESS OTHERWISE NOTED
- 40' BUILDING SETBACK LINE