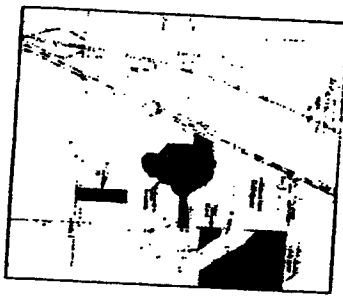
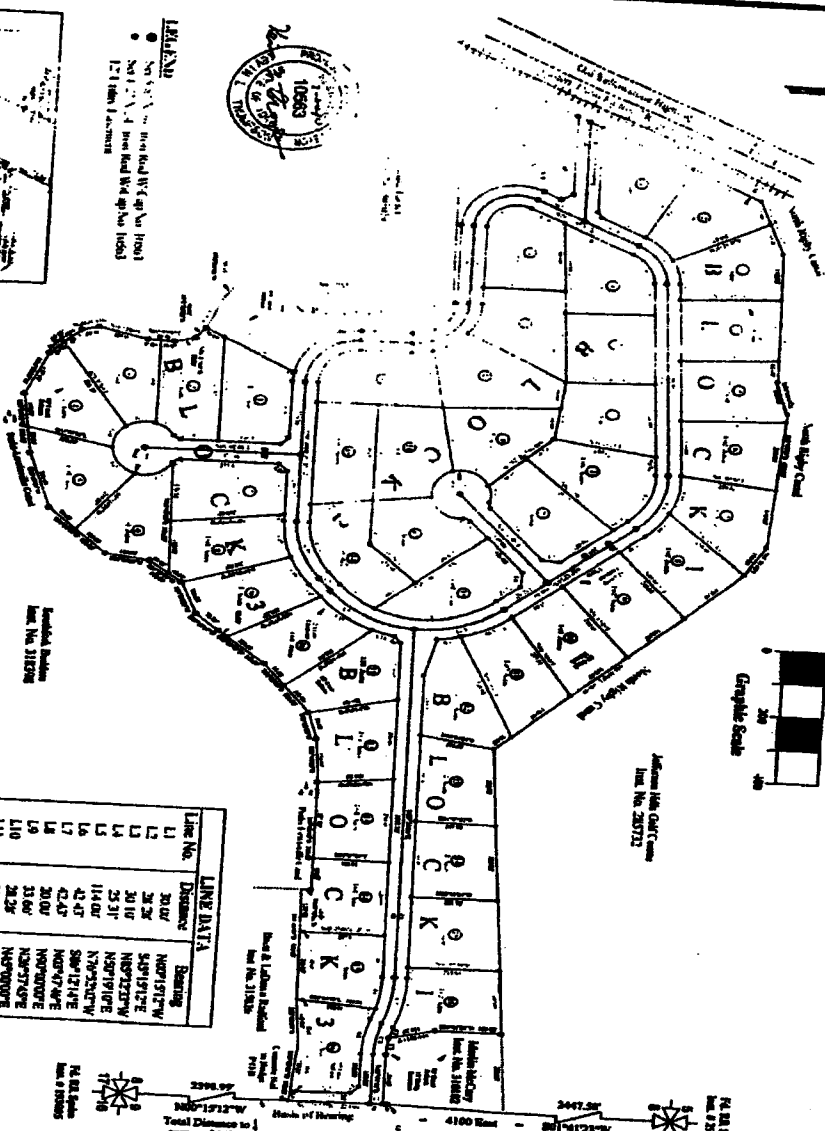


# JEFFERSON GREENS ESTATES

DIVISION NO. 1  
JEFFERSON COUNTY, IDAHO  
LOCATED IN THE N 1/2 OF SECTION 8, T4N R39E, B1M.



**NOTES:**  
 NOTE 1: This subdivision file exceeds the 500 year Flood Plain as per FEMA Map No. 15051(02)03 B.  
 NOTE 2: The intended use of this subdivision is for Residential Single Family Dwelling Units.  
 NOTE 3: As per requirements of the Unincorporated Townships, all lots within this subdivision shall be served by Educational Service Systems.  
 NOTE 4: The Status of Ownership and Homestead of the Subdivision was obtained from a Record of Deeds, Chain of Conveyance, Taxmap and recorded in the Jefferson County Courthouse at Laramie No. 37887.

Line No.	Distance	Bearing
L1	30.00	N89°17'12"W
L2	31.32	S49°19'12"E
L3	30.18	N89°17'12"W
L4	25.37	N89°17'12"W
L5	114.00	N89°17'12"W
L6	42.57	N89°17'12"W
L7	42.57	S89°17'12"W
L8	20.00	N89°17'12"W
L9	13.66	N89°17'12"E
L10	28.28	N89°17'12"E
L11	28.28	N89°17'12"E
L12	24.17	S49°19'12"E
L13	20.91	N89°17'12"W
L14	14.00	N89°17'12"E
L15	53.27	N89°17'12"E
L16	45.91	N89°17'12"E
L17	45.91	N89°17'12"E
L18	45.91	N89°17'12"E

**ACRES:**  
 Total Subdivision: 57.14 Acres  
 47 Lots: 48.10 Acres  
 Divided into: 94 Acres

**SURVEYOR:**  
 Karen L. Thompson, P.L.S.  
 154 East Main Street  
 Rigby, ID 83442  
 (208) 734-4771

**LAND OWNERS:**  
 Kendall & Bobby Shipp  
 4100 East 660 North  
 Rigby, ID 83442  
 (208) 315-5441

Curve No.	Delta	Radius	Arc
C1	127°00'	240.00	84.27
C2	30°00'	240.00	33.51
C3	127°00'	240.00	84.27
C4	30°00'	240.00	33.51
C5	127°00'	240.00	84.27
C6	30°00'	240.00	33.51
C7	127°00'	240.00	84.27
C8	30°00'	240.00	33.51
C9	127°00'	240.00	84.27
C10	30°00'	240.00	33.51
C11	127°00'	240.00	84.27
C12	30°00'	240.00	33.51
C13	127°00'	240.00	84.27
C14	30°00'	240.00	33.51
C15	127°00'	240.00	84.27
C16	30°00'	240.00	33.51
C17	127°00'	240.00	84.27
C18	30°00'	240.00	33.51
C19	127°00'	240.00	84.27
C20	30°00'	240.00	33.51
C21	127°00'	240.00	84.27
C22	30°00'	240.00	33.51
C23	127°00'	240.00	84.27
C24	30°00'	240.00	33.51
C25	127°00'	240.00	84.27
C26	30°00'	240.00	33.51
C27	127°00'	240.00	84.27
C28	30°00'	240.00	33.51
C29	127°00'	240.00	84.27
C30	30°00'	240.00	33.51
C31	127°00'	240.00	84.27
C32	30°00'	240.00	33.51
C33	127°00'	240.00	84.27
C34	30°00'	240.00	33.51
C35	127°00'	240.00	84.27
C36	30°00'	240.00	33.51
C37	127°00'	240.00	84.27
C38	30°00'	240.00	33.51
C39	127°00'	240.00	84.27
C40	30°00'	240.00	33.51
C41	127°00'	240.00	84.27
C42	30°00'	240.00	33.51
C43	127°00'	240.00	84.27
C44	30°00'	240.00	33.51
C45	127°00'	240.00	84.27
C46	30°00'	240.00	33.51
C47	127°00'	240.00	84.27
C48	30°00'	240.00	33.51
C49	127°00'	240.00	84.27
C50	30°00'	240.00	33.51
C51	127°00'	240.00	84.27
C52	30°00'	240.00	33.51
C53	127°00'	240.00	84.27
C54	30°00'	240.00	33.51
C55	127°00'	240.00	84.27
C56	30°00'	240.00	33.51
C57	127°00'	240.00	84.27
C58	30°00'	240.00	33.51
C59	127°00'	240.00	84.27
C60	30°00'	240.00	33.51
C61	127°00'	240.00	84.27
C62	30°00'	240.00	33.51
C63	127°00'	240.00	84.27
C64	30°00'	240.00	33.51
C65	127°00'	240.00	84.27
C66	30°00'	240.00	33.51
C67	127°00'	240.00	84.27
C68	30°00'	240.00	33.51
C69	127°00'	240.00	84.27
C70	30°00'	240.00	33.51
C71	127°00'	240.00	84.27
C72	30°00'	240.00	33.51
C73	127°00'	240.00	84.27
C74	30°00'	240.00	33.51
C75	127°00'	240.00	84.27
C76	30°00'	240.00	33.51
C77	127°00'	240.00	84.27
C78	30°00'	240.00	33.51
C79	127°00'	240.00	84.27
C80	30°00'	240.00	33.51
C81	127°00'	240.00	84.27
C82	30°00'	240.00	33.51
C83	127°00'	240.00	84.27
C84	30°00'	240.00	33.51
C85	127°00'	240.00	84.27
C86	30°00'	240.00	33.51
C87	127°00'	240.00	84.27
C88	30°00'	240.00	33.51
C89	127°00'	240.00	84.27
C90	30°00'	240.00	33.51
C91	127°00'	240.00	84.27
C92	30°00'	240.00	33.51
C93	127°00'	240.00	84.27
C94	30°00'	240.00	33.51
C95	127°00'	240.00	84.27
C96	30°00'	240.00	33.51
C97	127°00'	240.00	84.27
C98	30°00'	240.00	33.51
C99	127°00'	240.00	84.27
C100	30°00'	240.00	33.51

**TE THOMPSON ENGINEERING, INC.**  
 CONSULTING ENGINEERS  
 RIGBY, IDAHO 83442

**FINAL PLAT**

LOCATED IN THE N 1/2 OF SECTION 8, TOWNSHIP 4 NORTH, RANGE 39 EAST, JEFFERSON COUNTY, IDAHO

Project Name: Kendall & Bobby Shipp  
 Job Number: 2003-51  
 Date: January 15, 2004  
 Surveyor: K.L.T.  
 Scale: 1" = 200'  
 Sheet 1 of 1