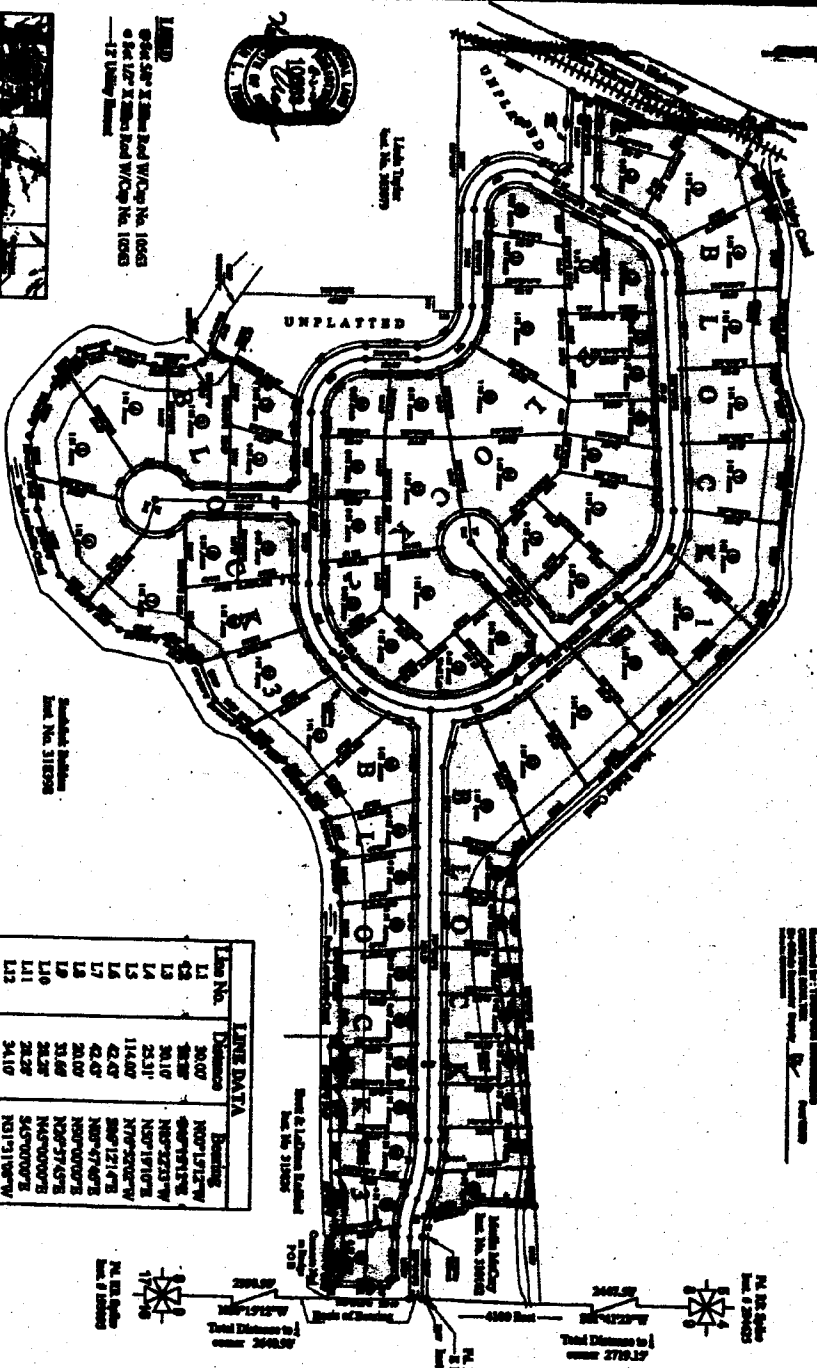
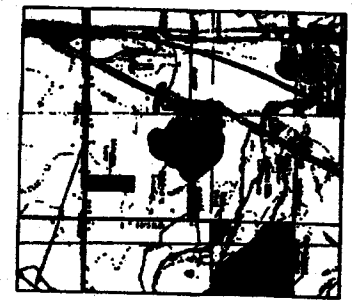


# 1st AMENDED PLAT OF THE JEFFERSON GREENS ESTATES

DIVISION NO. 1  
JEFFERSON COUNTY, IDAHO  
LOCATED IN THE N 1/2 OF SECTION 8, T4N199E, R1M



Lot No.	Dimensions	Containing
L1	20.07'	N00°15'12"W
L2	20.10'	S00°19'12"E
L3	20.10'	N00°22'31"W
L4	23.31'	N00°19'10"E
L5	114.00'	N79°28'02"W
L6	42.43'	S00°12'14"E
L7	42.43'	N00°57'46"E
L8	20.00'	N00°00'00"E
L9	31.66'	N00°37'45"E
L10	28.28'	N40°00'00"E
L11	28.28'	S45°00'00"E
L12	34.10'	N01°31'08"W
L13	20.51'	N00°25'35"E
L14	34.09'	N00°24'28"E
L15	52.97'	N00°17'02"E
L16	45.91'	N00°00'00"E
L17	45.91'	N00°00'00"E
L18	45.91'	N00°00'00"E



AIRIAL PHOTO  
(Scale)

**NOTES:**  
 NOTE 1: This subdivision shall contain the 500-year Flood Plain as per FEMA Map No. 16051C0239 B.  
 NOTE 2: The intended use of this subdivision is for Residential Single Family Dwelling Units and Land Pools by Utes.  
 NOTE 3: All per requirements of the District 7 State Department, all lots within this subdivision will be served by Submerged Utility System.  
 NOTE 4: The State of Planning and Zoning of the Subdivision was obtained from a General of Planning from the County Engineer and recorded in the Jefferson County Commission on Instrument No. 317617

**ADJACENTS:**  
 Total Subdivision: 57.14 Acres  
 69 Lots: 49.10 Acres  
 Dedicated Road: 9.04 Acres

**SURVEYOR:**  
 Kendall Shippen, P.L.S.  
 154 East Idaho Street  
 Idaho, ID 83442  
 (208) 765-8771

**LAND OWNER:**  
 Kendall Shippen  
 4184 East 460 North  
 Idaho, ID 83442  
 (208) 313-8641

Curve No.	Delta	Radius	Area
C1	179°00'00"	200.00'	20.27'
C2	179°00'00"	200.00'	33.51'
C3	179°00'00"	200.00'	54.52'
C4	179°00'00"	200.00'	76.54'
C5	179°00'00"	200.00'	98.56'
C6	179°00'00"	200.00'	120.58'
C7	179°00'00"	200.00'	142.60'
C8	179°00'00"	200.00'	164.62'
C9	179°00'00"	200.00'	186.64'
C10	179°00'00"	200.00'	208.66'
C11	179°00'00"	200.00'	230.68'
C12	179°00'00"	200.00'	252.70'
C13	179°00'00"	200.00'	274.72'
C14	179°00'00"	200.00'	296.74'
C15	179°00'00"	200.00'	318.76'
C16	179°00'00"	200.00'	340.78'
C17	179°00'00"	200.00'	362.80'
C18	179°00'00"	200.00'	384.82'
C19	179°00'00"	200.00'	406.84'
C20	179°00'00"	200.00'	428.86'
C21	179°00'00"	200.00'	450.88'
C22	179°00'00"	200.00'	472.90'
C23	179°00'00"	200.00'	494.92'
C24	179°00'00"	200.00'	516.94'
C25	179°00'00"	200.00'	538.96'
C26	179°00'00"	200.00'	560.98'
C27	179°00'00"	200.00'	583.00'
C28	179°00'00"	200.00'	605.02'
C29	179°00'00"	200.00'	627.04'
C30	179°00'00"	200.00'	649.06'
C31	179°00'00"	200.00'	671.08'
C32	179°00'00"	200.00'	693.10'
C33	179°00'00"	200.00'	715.12'
C34	179°00'00"	200.00'	737.14'
C35	179°00'00"	200.00'	759.16'
C36	179°00'00"	200.00'	781.18'
C37	179°00'00"	200.00'	803.20'

**TE THOMPSON ENGINEERING, INC.**  
 CONSULTING ENGINEERS  
 ROBY, IDAHO 83442

## AMENDED FINAL PLAT

LOCATED IN THE N 1/2 OF SECTION 8, TOWNSHIP 4 NORTH, RANGE 99 EAST, JEFFERSON COUNTY, IDAHO

Project Name: Kendall Shippen  
 Job Number: 2002-51

Date Surveyed: June 28, 2005  
 Surveyor: K.L.T.  
 Drawn By: K.L.T.

Scale: 1" = 200'  
 Sheet: 2 of 2