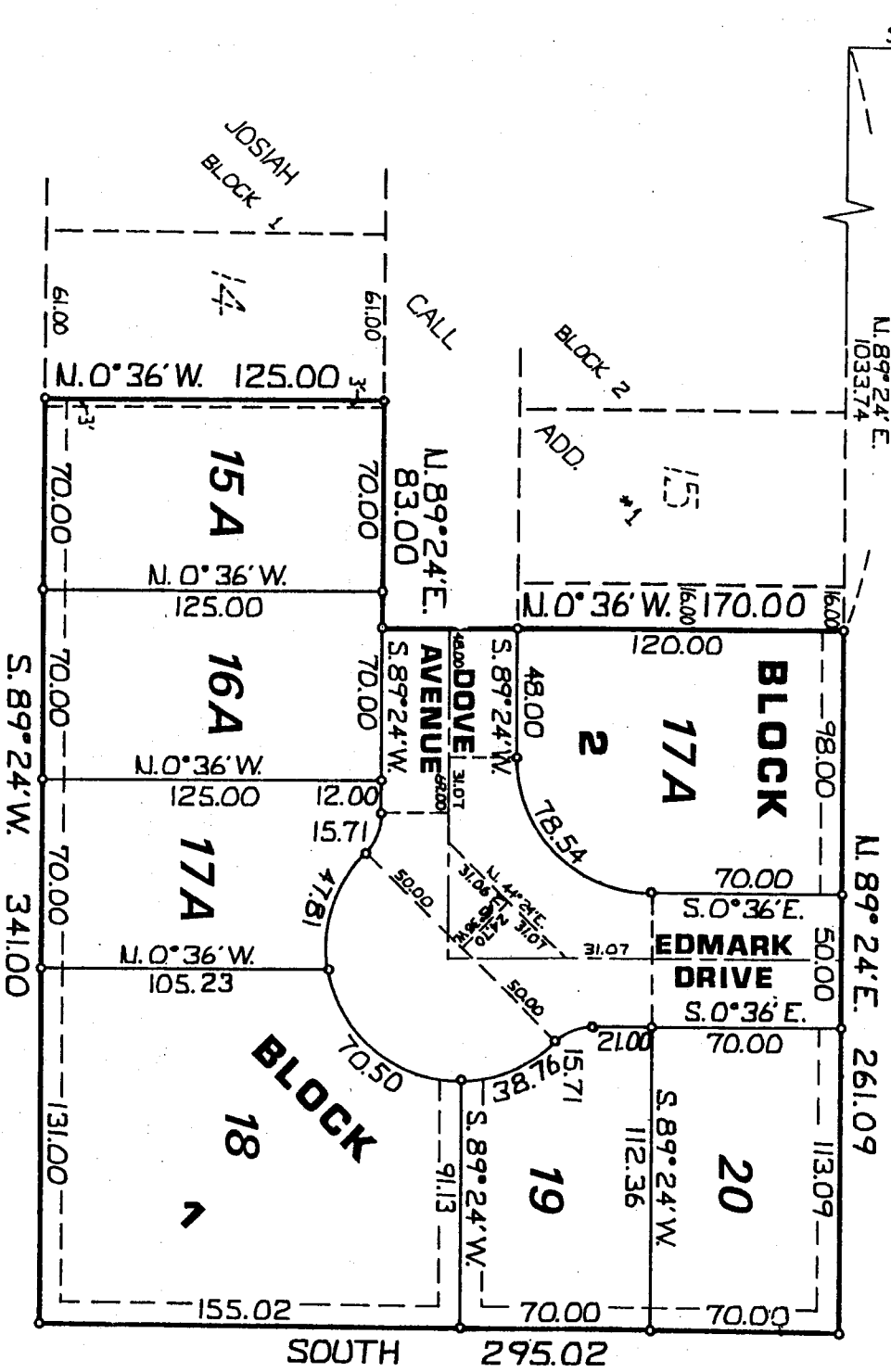


JOSIAH GALE ADDITION

DIV. NO. 2 RIGBY, IDAHO
 AMENDED PLAT OF A PORTION OF LOT 14 AND
 LOTS 15, 16, AND 17 BLOCK 1 AND A
 PORTION OF LOT 16 AND LOT 17 BLOCK
 2 JOSIAH CALL ADDITION DIV. NO. 1
 AND A PORTION OF THE S.W. 1/4 OF
 THE N.E. 1/4 SEC. 18 T.4N. R.39 E.B.M.



While this is a photographic reproduction of the recorded plat, the Company assumes no liability for variations, if any, with a re-survey.
IDAHO TITLE & TRUST CO.
 Idaho Falls, Idaho