

This map/plot may or may not be a survey of the land depicted hereon. You should not rely upon it for any purpose other than orientation to the general location of the parcel or parcels depicted. The Company expressly disclaims any liability for alleged loss or damage which may result from reliance upon this map.

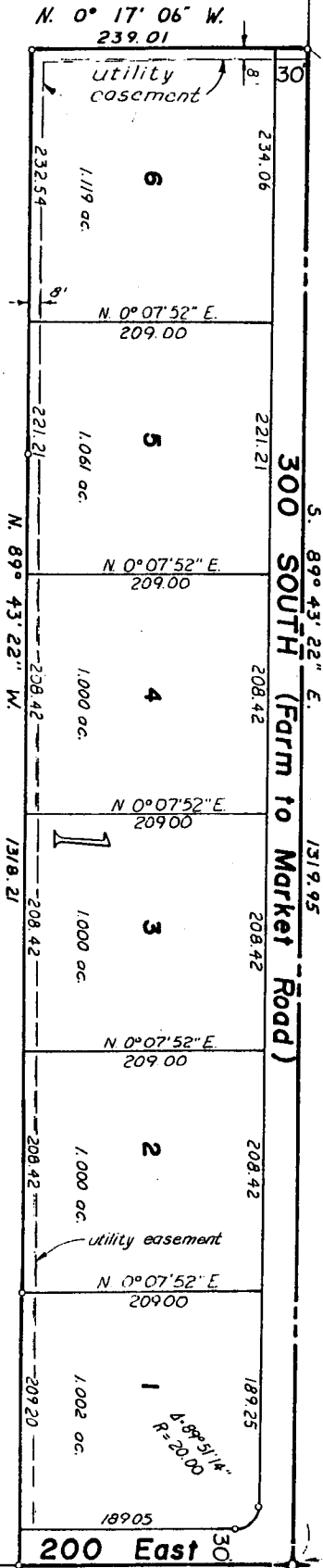
KIMBERLY ESTATES

DIVISION NO. 2
 JEFFERSON COUNTY, IDAHO
 Part of the N.E.1/4, N.E.1/4
 Section 32, T.4N., R.39 E. B. M.

SCALE 1" = 100'

N.W. Cor. Sec. 32
 T.4N., R.39E. B.M.
 (Recorded Corner)

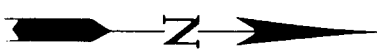
N.E. Cor. Sec. 32
 T.4N., R.39E. B.M.
 (Recorded Corner)



NOTES:

- small circles indicate a 1/2" x 24" iron rod.
- utility easements are 8' thru each lot unless otherwise shown.

S.E. Cor. Sec. 32
 T.4N., R.39 E. B.M.
 (Recorded Corner)



(MILO ROAD)