



# LAKE SUBDIVISION

## DIVISION NO. 2

JEFFERSON COUNTY, IDAHO

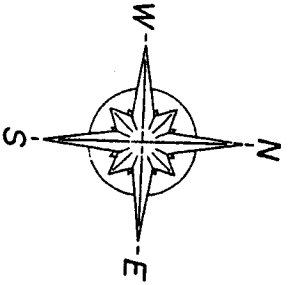
PART OF S.E. 1/4 OF SEC. 13 T. 4N., R 38 E. B.M.

BENTON ENGINEERING CONSULTING ENGINEERS

IDAHO FALLS

SCALE 1"=100'

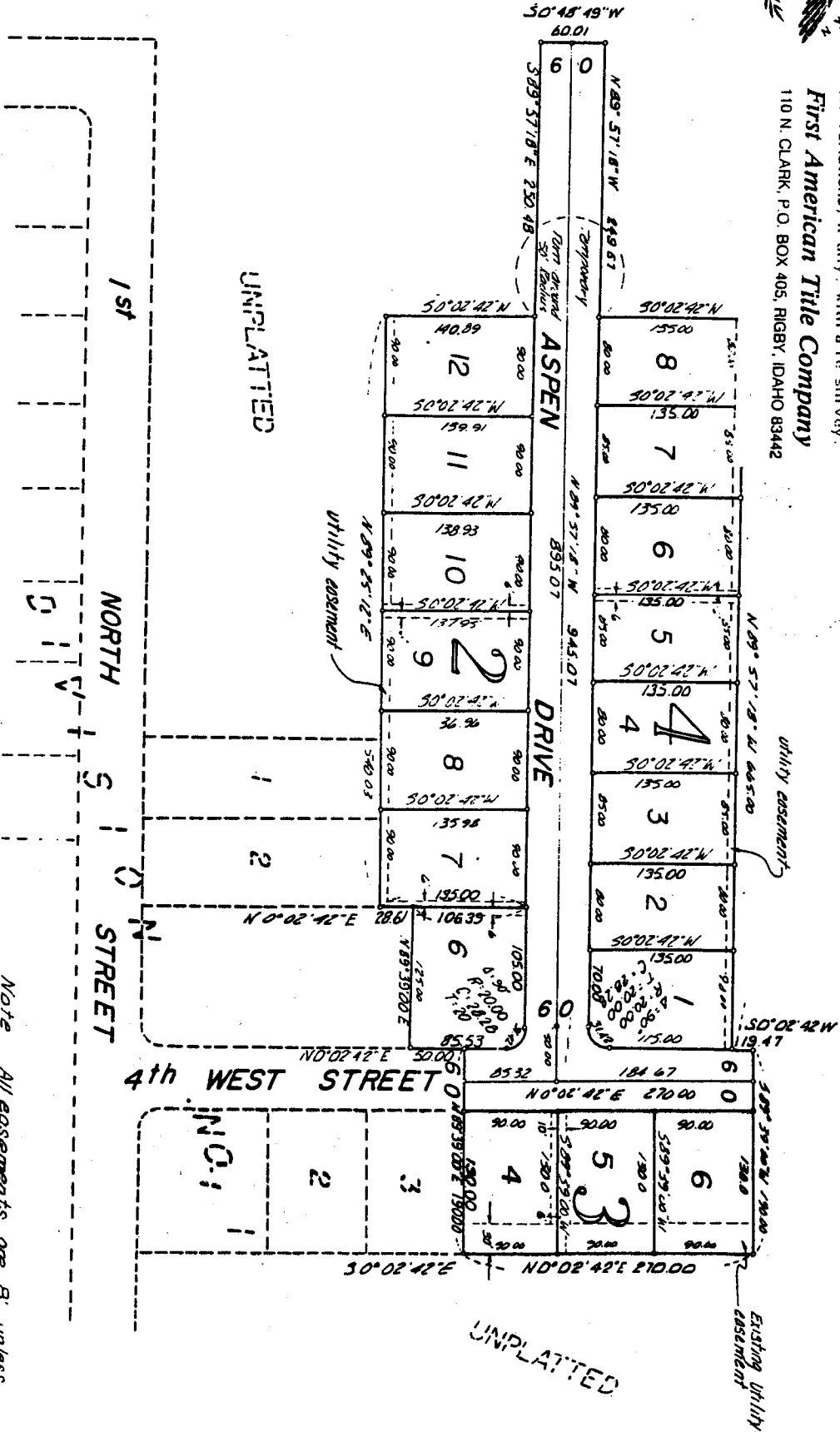
IDAHO



While this is a photographic reproduction of the recorded plat, the Company assumes no liability for variations, if any, with a plat survey.

**First American Title Company**

110 N. CLARK, P.O. BOX 405, RIGBY, IDAHO 83442



UNPLATTED

UNPLATTED

DIV. NO. 1

Note All easements are B' unless otherwise specified