

1st Amended

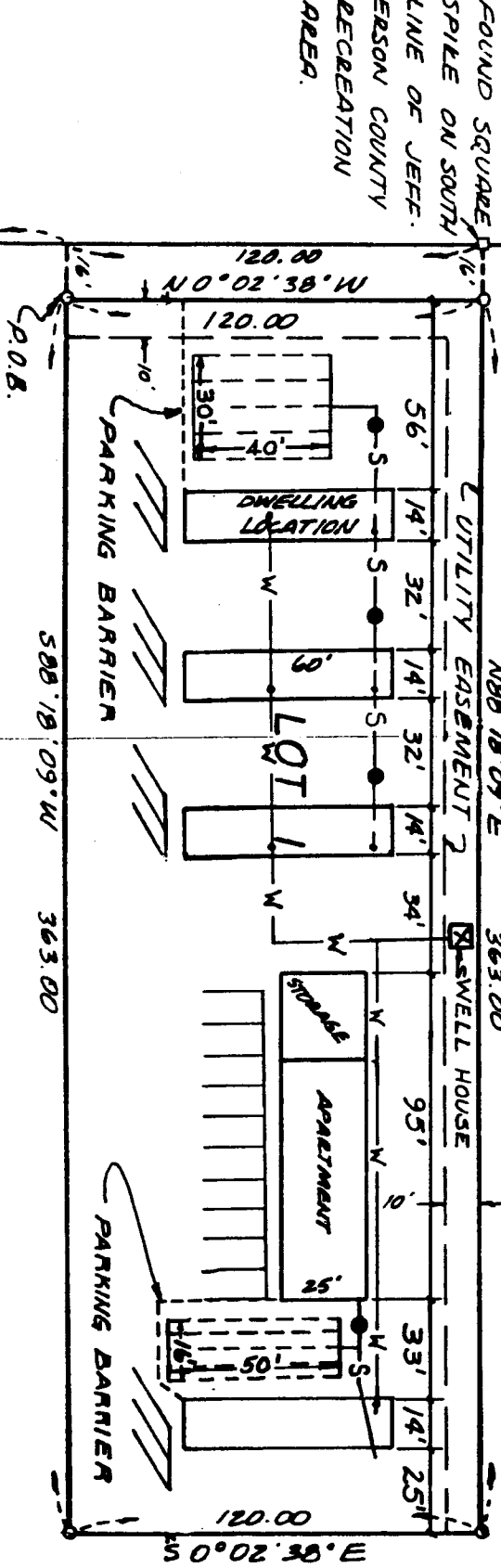
LAKESIDE PARK

PART OF

N.W. 1/4, SECTION 8, T. 4 N., R. 39 E. B.M.
JEFFERSON COUNTY, IDAHO

CORNER FALLS
IN LAKE
REFERENCED BY
STATE HIGHWAY

NOTE:
FOR WATER AND SEWER DETAILS,
SEE DEVELOPMENT DRAWING
FILED WITH JEFFERSON COUNTY.



FOUND SQUARE
SPIKE ON SOUTH
LINE OF JEFF.
ERSON COUNTY
RECREATION
AREA.

DEED OF DEDICATION

SCALE 1"=50'