

LAKESSIDE PARK

N.W. 1/4, SECTION 8, T. 4 N., R. 39 E. B.M.
JEFFERSON COUNTY, IDAHO

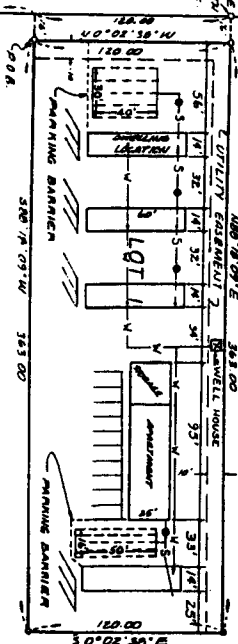
1st Amended

RECORDERS CERTIFICATE

253171

COGNATE FALLS
IN LAKE
SEPARATED BY
STATE HIGHWAY

NOTE:
WATER AND SANDS DEPOSITS,
SEE DEVELOPMENT DRAWING
FILED WITH JEFFERSON COUNTY.



DEED OF DEDICATION

SCALE 1"=50'

SUBDIVISION BEARING
N 0° 20' 30" W 350.00'

NORTH RIGBY ROAD

BE IT KNOWN THAT ELMER PARK
is hereby certified that the legal owners of the property shown herein and
being described as LAKESSIDE PARK
Jefferson County, Idaho, and that we hereby give, grant and dedicate to the public
for public use all streets, and easements shown herein and described as:
Beginning at a point on the east line of a county road that is 100.00' by 400.00' feet along the section line and 100.00' feet from the east line of Section 8, Township 4 North, Range 39 East 6th E., and running thence 100.00' S. 00° 20' 30" W. 350.00' feet to the south fence line of the Jefferson County
Residential Park, thence 100.00' S. 00° 20' 30" W. 350.00' feet to the point of beginning.

Elmer Park
Elmer Park

Witness our hands this 1st day of August 1989
State of Idaho
County of Jefferson
On this 1st day of August, 1989, before me, a Notary Public, first appeared:
Elmer Park



TRUNCATED 1/2" X 3/8" COP
(RECORDED)



HARPER - LEVITT ENGINEERS AND LAND SURVEYORS, INC.
PROFESSIONAL ENGINEERS AND LAND SURVEYORS
100 W. JORDAN, ST. P.O. BOX 888 · BLACROFT, IDAHO 83221 · (208) 785-2377 ON 2390

DATE 8/7/89
DATE 8/7/89
TARE 242 FILE
COPYRIGHT © 1989 M.E.
ALL RIGHTS RESERVED

SUBDIVISION PLAT

LAKESSIDE PARK

SHEET 1 OF 1

I, Notary Public, do hereby certify that the foregoing plat of the LAKESSIDE PARK
is a true and correct copy of the original as shown to me in the office of the Recorder of Jefferson County,
Idaho, on this 1st day of August, 1989, at 12:55 P.M.
Recorded as Instrument No. 253171

James H. Smith
Notary Public

SURVEYORS CERTIFICATE

I, RIG H. LEVITT, a registered professional land surveyor in the State of Idaho,
do hereby certify that the survey of this subdivision, designated as Lakeside Park,
is a true and correct copy of the original as shown to me in the office of the Recorder of Jefferson County,
Idaho, on this 1st day of August, 1989, at 12:55 P.M.
Recorded as Instrument No. 253171

Rig H. Levitt
Registered Professional Land Surveyor
License No. 2283



COUNTY APPROVAL

This plat was duly accepted and approved by the Board of County Commissioners, Jefferson County, Idaho resolution entered this
1st day of August, 1989.
Ray H. Smith
County Clerk

DATE 8-7-89

TREASURERS CERTIFICATE

Pursuant to 20-1206, Idaho Code, I, Treasurer, do hereby certify that all county property taxes due on this subdivision, both
current and delinquent, have been paid in full in view of
this 1st day of August, 1989.
William E. Silveira
Treasurer

SURVEYORS APPROVAL

I certify that I have reviewed this plat and find that it complies with sections 20-1205 of the Idaho Code.

John Apple
County Surveyor
8-7-89

SANITARY RESTRICTIONS

Sanitary restrictions in force under Title 24, Chapter 12, Idaho Code
Dist. No. 7 Health Dept.
Approved by *David A. Anderson*, E.H.S.

LAKESSIDE PARK

LEGEND
Section control corners
Placed 5/97 from rod with cap
marked P.L.S. 4563.
Point of Beginning, Placed 2" Dia.