

LAZE ACRES
DIVISION NO. 1
 JEFFERSON COUNTY, IDAHO
 BEING PARTS OF LOT 2 AND THE SE 1/4 NE 1/4 SECTION 19 T 4 R 40 E B.M.



RECORDER'S CERTIFICATE

I have examined the foregoing plat and find the same to conform to the provisions of the laws of the State of Idaho relating to the recording of such plats, and I have caused the same to be recorded in my office.

[Signature]

EXAMINING SURVEYOR'S CERTIFICATE

I have examined the foregoing plat and find the same to conform to the provisions of the laws of the State of Idaho relating to the recording of such plats, and I have caused the same to be recorded in my office.

[Signature]

LEGEND & NOTES

1. All bearings and distances are given in feet and inches, unless otherwise specified.

2. The bearings are given in degrees, minutes and seconds, unless otherwise specified.

3. The distances are given in feet and inches, unless otherwise specified.

4. The corners are marked with iron pins, unless otherwise specified.

5. The plat is subject to the provisions of the laws of the State of Idaho relating to the recording of such plats.

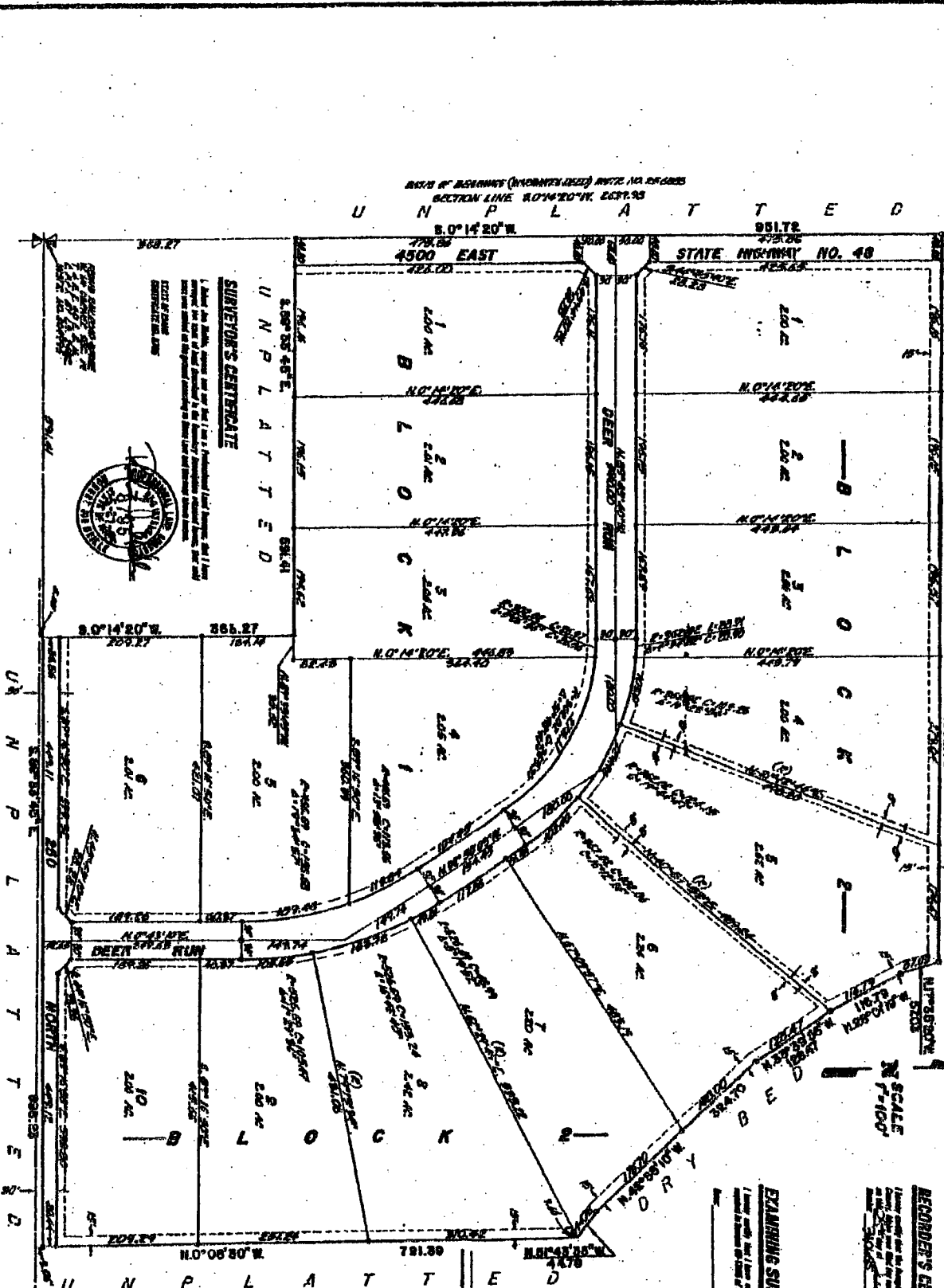
6. The plat is subject to the provisions of the laws of the State of Idaho relating to the recording of such plats.

7. The plat is subject to the provisions of the laws of the State of Idaho relating to the recording of such plats.

8. The plat is subject to the provisions of the laws of the State of Idaho relating to the recording of such plats.

9. The plat is subject to the provisions of the laws of the State of Idaho relating to the recording of such plats.

10. The plat is subject to the provisions of the laws of the State of Idaho relating to the recording of such plats.



SURVEYOR'S CERTIFICATE

I have examined the foregoing plat and find the same to conform to the provisions of the laws of the State of Idaho relating to the recording of such plats, and I have caused the same to be recorded in my office.

[Signature]