

74.547' Iron  
Nail No. 2237945



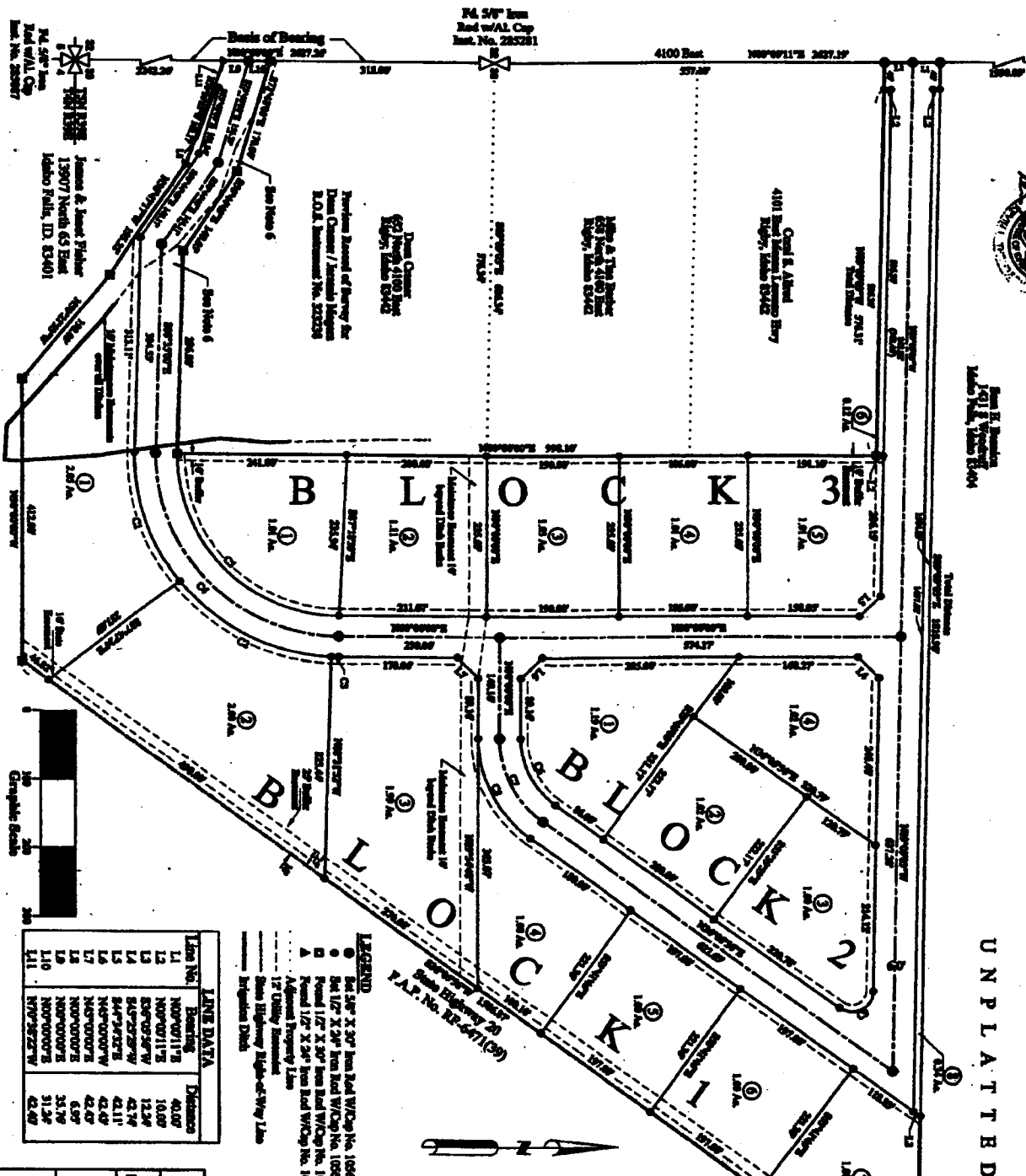
James H. Anderson  
Professional Engineer  
1401 E. Weaver Blvd.

# LONG ISLAND BUSINESS PARK

DIVISION NO. 1  
JEFFERSON COUNTY, IDAHO  
LOCATED IN THE W 1/2 OF SECTION 33, T5N R39E, B.M.

UNPLATTED

Subdivision of 34.6200 Acres  
into 10 Lots, 10 Blocks and 10 Lots  
Total Area: 34.6200 Acres  
Total Area: 34.6200 Acres  
Total Area: 34.6200 Acres



74.547' Iron  
Nail No. 2237945  
James H. Anderson  
Professional Engineer  
13907 North 65 East  
Lubbock Park, ID. 83401



Lot No.	LINE DATA	Distance
L1	80°00'00"R	40.00'
L2	N00°00'15"W	10.00'
L3	N00°00'15"W	12.24'
L4	S44°25'57"W	42.74'
L5	S44°25'57"W	42.11'
L6	N40°00'00"W	42.49'
L7	N00°00'00"W	42.49'
L8	N00°00'00"W	6.99'
L9	N00°00'00"W	31.24'
L10	N00°00'00"W	31.24'
L11	N00°00'00"W	42.49'

**LEGEND**

- 64.547' X 30' Iron Nail W.C.P. No. 10683
- 64.127' X 24' Iron Nail W.C.P. No. 10683
- ▲ 64.127' X 30' Iron Nail W.C.P. No. 10683
- 64.127' X 24' Iron Nail W.C.P. No. 10683
- Adjoined Property Line
- - - 12' Utility Easement
- - - State Highway Right-of-Way Line
- - - Easement Data
- - - Easement Data

Curve No.	Delta	Radius	AVG
C1	59°59'12"	290.00'	202.29'
C2	49°23'48"	290.00'	202.00'
C3	49°23'48"	290.00'	10.31'
C4	91°23'00"	260.00'	414.84'
C5	91°23'00"	260.00'	464.67'
C6	59°59'00"	120.00'	112.89'
C7	59°59'00"	180.00'	141.11'
C8	59°59'00"	180.00'	168.34'
C9	129°14'00"	30.00'	65.29'

**ACREAGE**

Total Subdivision: 34.6200 Acres  
 18 Lots: 19.92 Acres  
 10 Blocks: 5.81 Acres  
 10 Lots: 8.89 Acres  
 Total: 34.6200 Acres

**NOTES:**

- The Subdivision data includes the 30' per Front Foot as per Final Plat No. 10010200 X.
- The Block of Building was obtained from a Board of Survey (Map No. 202251).
- The Block of Building was obtained from a Board of Survey (Map No. 202251).
- The Block of Building was obtained from a Board of Survey (Map No. 202251).
- All lots to be surveyed by Subdivided Survey.
- All lots to be surveyed by Subdivided Survey.
- All lots to be surveyed by Subdivided Survey.
- All lots to be surveyed by Subdivided Survey.
- All lots to be surveyed by Subdivided Survey.
- All lots to be surveyed by Subdivided Survey.

## FINAL PLAT

LOCATED IN THE W 1/2 OF SECTION 33, TOWNSHIP 5 NORTH, RANGE 39 EAST, JEFFERSON COUNTY, IDAHO

**TE THOMPSON ENGINEERING, INC.**  
CONSULTING ENGINEERS  
RIGBY, IDAHO 83442

Project Name: IAB Construction  
 2003-14  
 346 Number: IAB 2003-14  
 Code P.M.: IAB 2003-14  
 Date: October 17, 2005  
 Surveyor: K.L.T.  
 Drawn By: J.W.T.

Scale  
1" = 100'

Sheet  
2 of 2