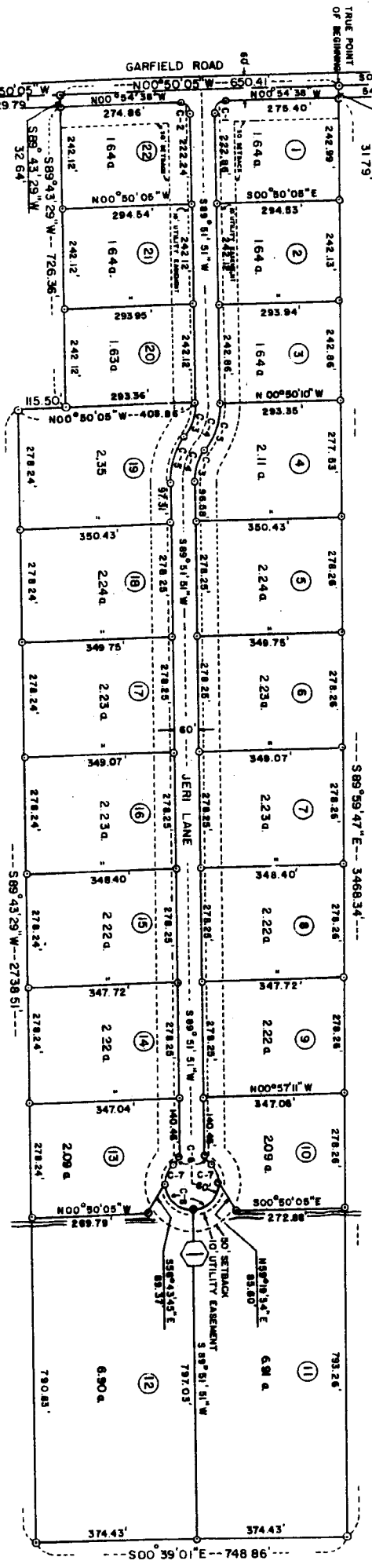
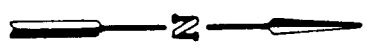


**LOWE SUBDIVISION**  
**DIVISION NO. 1**  
**JEFFERSON COUNTY, STATE OF IDAHO**  
**T4N, R38E, B.M., SEC. 26**



**FIRST AMERICAN TITLE COMPANY**

While this is a photographic reproduction of the  
 recorded plat, the Company assumes no liability  
 for variations, if any, with a re-survey.



N00°50'05" W 2628.56'

N00°50'05" W 1429.79'

GARFIELD ROAD

TRUE POINT OF BEGINNING

S89°59'47" E 317.9'

S89°43'29" W 726.36'

S89°43'29" W 726.36'

S89°43'29" W 726.36'

S89°43'29" W 726.36'

S89°43'29" W 726.36'

S89°43'29" W 726.36'

S89°43'29" W 726.36'

S89°43'29" W 726.36'

S89°43'29" W 726.36'

S89°43'29" W 726.36'

S89°43'29" W 726.36'

S00°39'01" E 748.86'