

MARTIN MEADOWS DIVISION NO. 1 JEFFERSON COUNTY, IDAHO

PART OF THE S.E. 1/4 OF SECTION 19 T. 4 N., R. 39 E., B. M.

U N P L A T T E D

BOUND

Beginning at
Southeast Co
rner of the
1324.73 feet
the POINT OF
SUBJECT TO:
CONTAINING:

OWNER

KNOW ALL &
land included
and divided
DIVISION NO.
hereon. The a
agreements on
any other can
be served by I

IN WITNESS

ACKN

STATE OF ID
County of B

On this //
to and for of

executed the
IN WITNESS
of my office

Notary Public
Residing in B
Commission

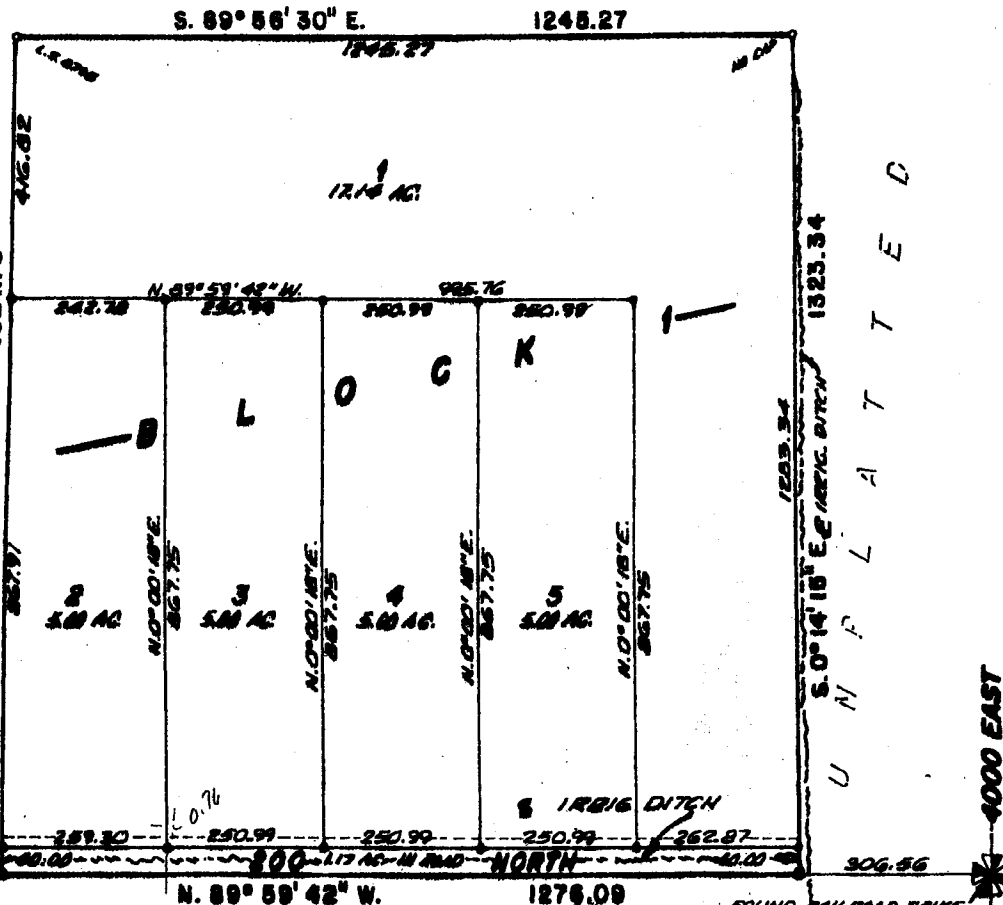
IRRIGA

It has been a
assessing Irrig
PROJECT
207 CMM

SURVE

I, Robert Jo
surveyed the
tract was sh

STATE OF ID
CERTIFICAT.



RAILROAD STRIKE
E. CORNER OF SEC. 19
T. 4 N. R. 39 E. B. M.
NO. 1324.73

SECTION LINE N. 89° 59' 42" W. 2652.61 BASIS OF MEASUREMENTS

FOUND RAILROAD STRIKE
S.E. CORNER SEC. 19
T. 4 N. R. 39 E. B. M.
C.P.P. BY L.S. BROWN
MAY 18, 1908

OWNING VIEW ACRES



LEGEND & NOTES

- 60" x 30" Steel Re-bar set with plastic cap stamped L.S. 8705
 - 12" x 24" Steel Re-bar set with plastic cap stamped L.S. 8705
 - 12" Steel Re-bar found with caps stamped as shown
- A ten foot wide Utility Easement is hereby reserved along all road frontages within each lot. All other easement widths are as shown.

According to FEMA Flood Plain Map of Jefferson County, Idaho, Community Panel No. 18061C03768 effective February 17, 1988, this subdivision lies in Zone X, areas determined to be

