

# MERRYDALE MEADOWS

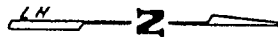
## DIVISION NO. 1

JEFFERSON COUNTY, IDAHO  
A PORTION OF  
SEC. 26 T4N R38 E.B.M.

ELLSWORTH ENGINEERING, INC.  
IDAHO FALLS, IDAHO

While this is a photographic reproduction of the recorded plat, the Company assumes no liability for variations, if any, with a re survey.

Rigby, Idaho 83442

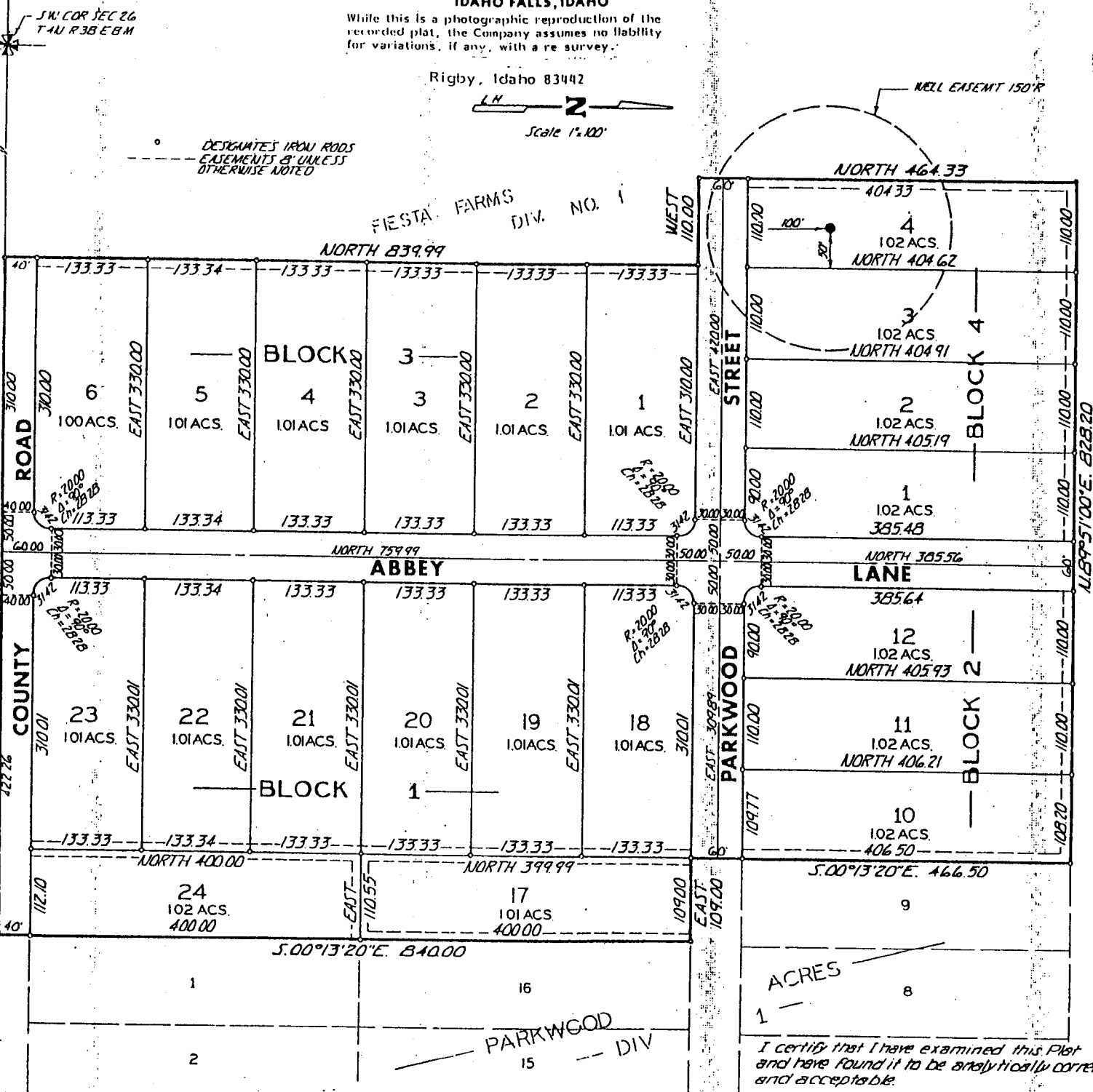


Scale 1"=100'

DESIGNATES IRON RODS  
EASEMENTS & UNLESS  
OTHERWISE NOTED

FESTAL FARMS  
DIV. NO. 1

WELL EASEMENT 150' R



I certify that I have examined this Plat and have found it to be analytically correct and acceptable.

DATE      EXAMINING ENGINEER     

SW COR SEC 26  
T4N R38 EBM

SE COR SEC 26  
T4N R38 EBM