

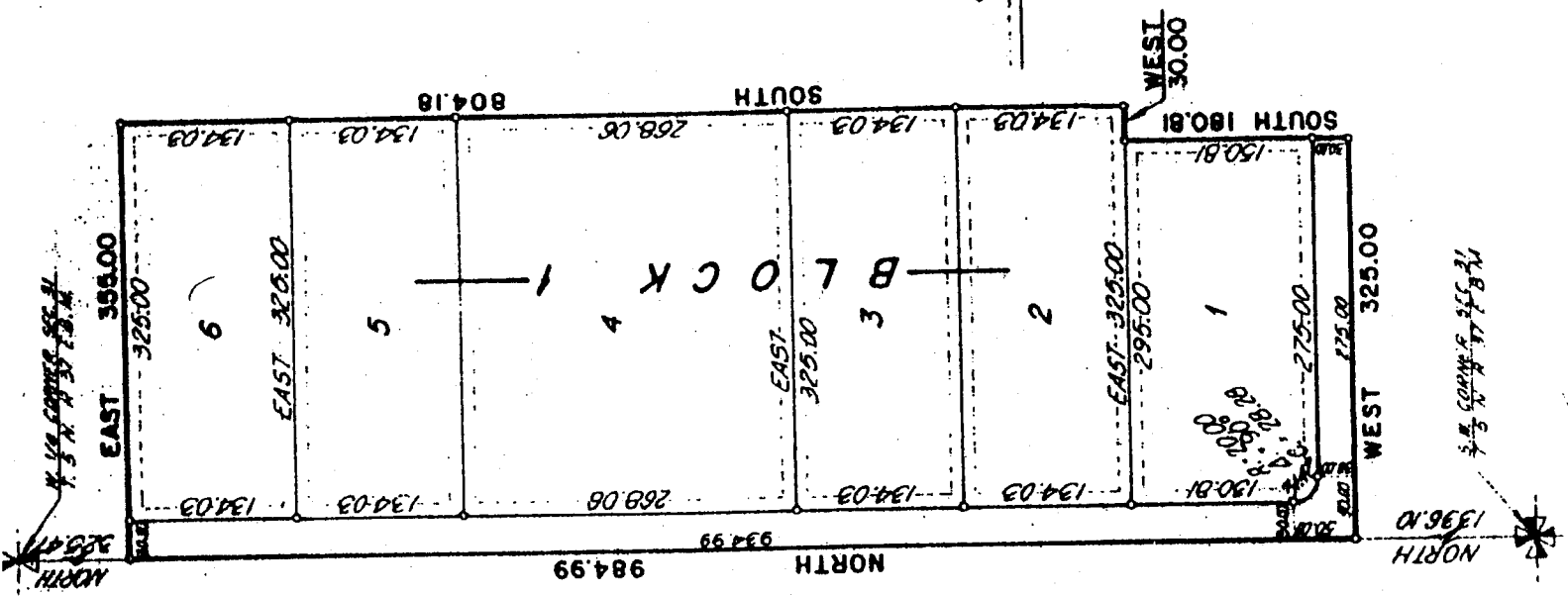
MOORE VIEW ESTATES

DIVISION NO. 1
JEFFERSON COUNTY, IDAHO
 A PORTION OF THE S.W. 1/4 OF SECTION 31 T. 5 N. R. 37 E. 8.M.
 ELLSWORTH ENGINEERING, INC.
 IDAHO FALLS, IDAHO



SCALE: 1" = 100'

Denotes Iron Rods
 Encasements 10 Feet Wide



FIRST AMERICAN TITLE COMPANY
 Idaho Falls, Idaho 83401

While this is a photographic reproduction of the recorded plat, the Company assumes no liability for variations, if any, with a re-survey.