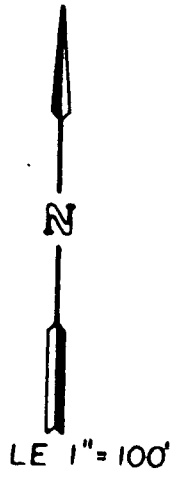
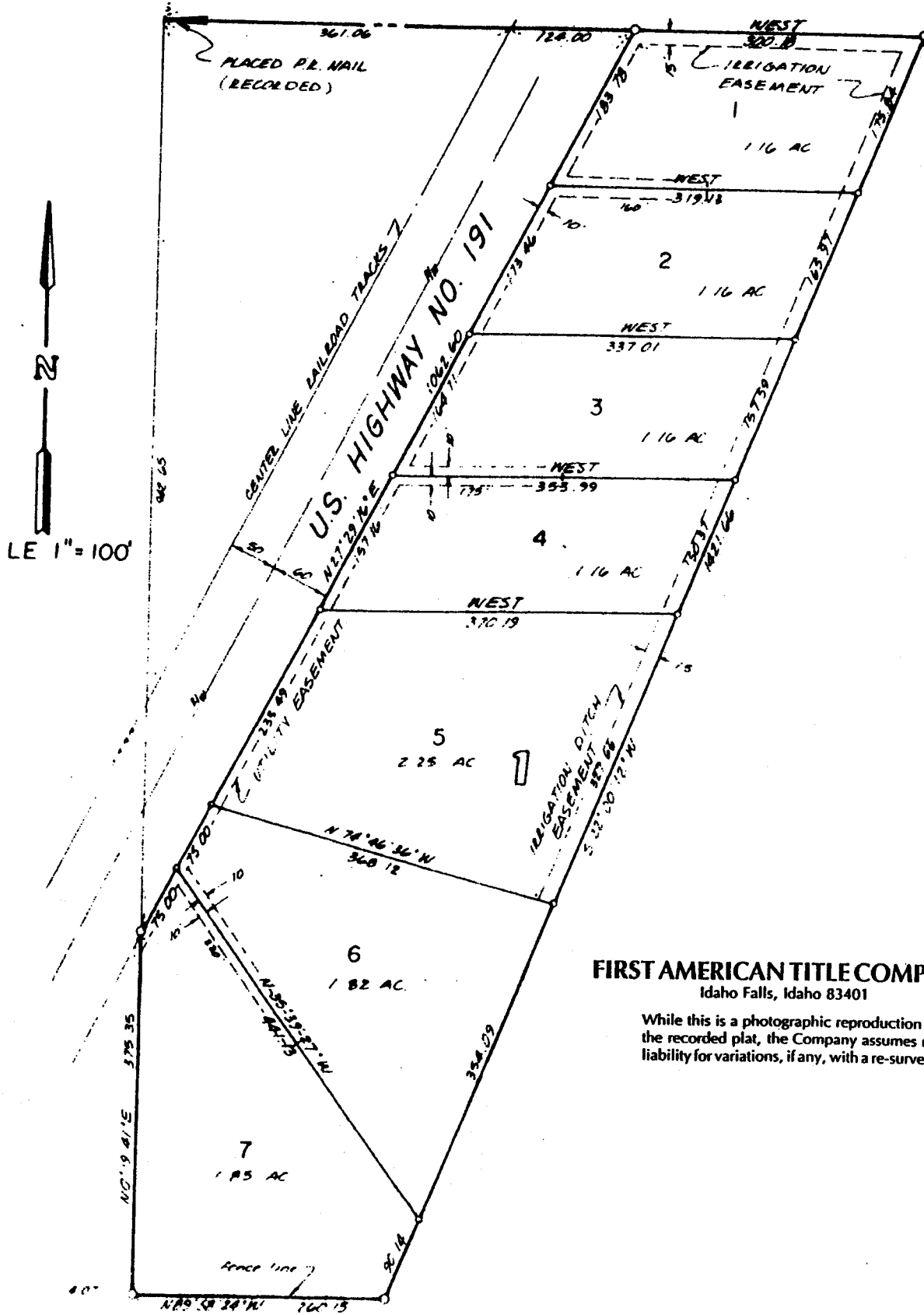


PARK SUBDIVISION

A MOBILE HOME SUBDIVISION

PART OF THE N.W. 1/4, N.E. 1/4, SECTION 36, T.4 N., R. 38 E. B.M. JEFFERSON COUNTY, IDAHO



FIRST AMERICAN TITLE COMPANY

Idaho Falls, Idaho 83401

While this is a photographic reproduction of the recorded plat, the Company assumes no liability for variations, if any, with a re-survey.