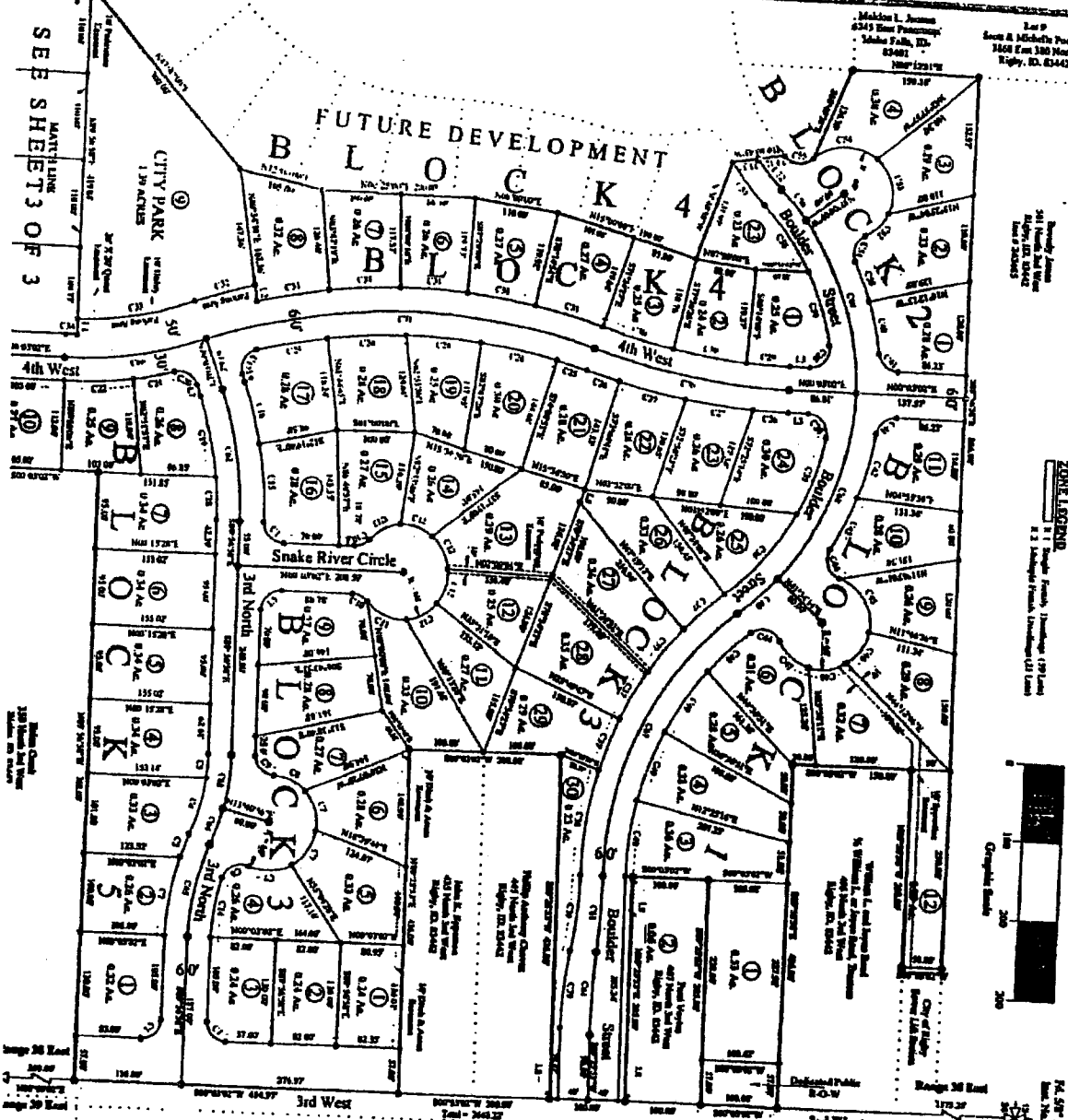


PIONEER PARK ESTATES

DIVISION NO. 1

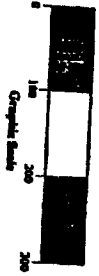
AN ADDITION TO THE CITY OF RIGBY
JEFFERSON COUNTY, IDAHO

LOCATED IN THE NE 1/4 OF SECTION 11, T4N R9E, B1M.



LEGEND

- 1. 1/4 Section 11, T4N R9E, B1M
- 2. 1/4 Section 11, T4N R9E, B1M
- 3. 1/4 Section 11, T4N R9E, B1M
- 4. 1/4 Section 11, T4N R9E, B1M
- 5. 1/4 Section 11, T4N R9E, B1M
- 6. 1/4 Section 11, T4N R9E, B1M
- 7. 1/4 Section 11, T4N R9E, B1M
- 8. 1/4 Section 11, T4N R9E, B1M
- 9. 1/4 Section 11, T4N R9E, B1M
- 10. 1/4 Section 11, T4N R9E, B1M
- 11. 1/4 Section 11, T4N R9E, B1M
- 12. 1/4 Section 11, T4N R9E, B1M
- 13. 1/4 Section 11, T4N R9E, B1M
- 14. 1/4 Section 11, T4N R9E, B1M
- 15. 1/4 Section 11, T4N R9E, B1M
- 16. 1/4 Section 11, T4N R9E, B1M
- 17. 1/4 Section 11, T4N R9E, B1M
- 18. 1/4 Section 11, T4N R9E, B1M
- 19. 1/4 Section 11, T4N R9E, B1M
- 20. 1/4 Section 11, T4N R9E, B1M
- 21. 1/4 Section 11, T4N R9E, B1M
- 22. 1/4 Section 11, T4N R9E, B1M
- 23. 1/4 Section 11, T4N R9E, B1M
- 24. 1/4 Section 11, T4N R9E, B1M
- 25. 1/4 Section 11, T4N R9E, B1M
- 26. 1/4 Section 11, T4N R9E, B1M
- 27. 1/4 Section 11, T4N R9E, B1M
- 28. 1/4 Section 11, T4N R9E, B1M
- 29. 1/4 Section 11, T4N R9E, B1M
- 30. 1/4 Section 11, T4N R9E, B1M
- 31. 1/4 Section 11, T4N R9E, B1M
- 32. 1/4 Section 11, T4N R9E, B1M
- 33. 1/4 Section 11, T4N R9E, B1M
- 34. 1/4 Section 11, T4N R9E, B1M
- 35. 1/4 Section 11, T4N R9E, B1M
- 36. 1/4 Section 11, T4N R9E, B1M
- 37. 1/4 Section 11, T4N R9E, B1M
- 38. 1/4 Section 11, T4N R9E, B1M
- 39. 1/4 Section 11, T4N R9E, B1M
- 40. 1/4 Section 11, T4N R9E, B1M
- 41. 1/4 Section 11, T4N R9E, B1M
- 42. 1/4 Section 11, T4N R9E, B1M
- 43. 1/4 Section 11, T4N R9E, B1M
- 44. 1/4 Section 11, T4N R9E, B1M
- 45. 1/4 Section 11, T4N R9E, B1M
- 46. 1/4 Section 11, T4N R9E, B1M
- 47. 1/4 Section 11, T4N R9E, B1M
- 48. 1/4 Section 11, T4N R9E, B1M
- 49. 1/4 Section 11, T4N R9E, B1M
- 50. 1/4 Section 11, T4N R9E, B1M
- 51. 1/4 Section 11, T4N R9E, B1M
- 52. 1/4 Section 11, T4N R9E, B1M
- 53. 1/4 Section 11, T4N R9E, B1M
- 54. 1/4 Section 11, T4N R9E, B1M
- 55. 1/4 Section 11, T4N R9E, B1M
- 56. 1/4 Section 11, T4N R9E, B1M
- 57. 1/4 Section 11, T4N R9E, B1M
- 58. 1/4 Section 11, T4N R9E, B1M
- 59. 1/4 Section 11, T4N R9E, B1M
- 60. 1/4 Section 11, T4N R9E, B1M
- 61. 1/4 Section 11, T4N R9E, B1M
- 62. 1/4 Section 11, T4N R9E, B1M
- 63. 1/4 Section 11, T4N R9E, B1M
- 64. 1/4 Section 11, T4N R9E, B1M
- 65. 1/4 Section 11, T4N R9E, B1M
- 66. 1/4 Section 11, T4N R9E, B1M
- 67. 1/4 Section 11, T4N R9E, B1M
- 68. 1/4 Section 11, T4N R9E, B1M
- 69. 1/4 Section 11, T4N R9E, B1M
- 70. 1/4 Section 11, T4N R9E, B1M
- 71. 1/4 Section 11, T4N R9E, B1M
- 72. 1/4 Section 11, T4N R9E, B1M
- 73. 1/4 Section 11, T4N R9E, B1M
- 74. 1/4 Section 11, T4N R9E, B1M
- 75. 1/4 Section 11, T4N R9E, B1M
- 76. 1/4 Section 11, T4N R9E, B1M
- 77. 1/4 Section 11, T4N R9E, B1M
- 78. 1/4 Section 11, T4N R9E, B1M
- 79. 1/4 Section 11, T4N R9E, B1M
- 80. 1/4 Section 11, T4N R9E, B1M
- 81. 1/4 Section 11, T4N R9E, B1M
- 82. 1/4 Section 11, T4N R9E, B1M
- 83. 1/4 Section 11, T4N R9E, B1M
- 84. 1/4 Section 11, T4N R9E, B1M
- 85. 1/4 Section 11, T4N R9E, B1M
- 86. 1/4 Section 11, T4N R9E, B1M
- 87. 1/4 Section 11, T4N R9E, B1M
- 88. 1/4 Section 11, T4N R9E, B1M
- 89. 1/4 Section 11, T4N R9E, B1M
- 90. 1/4 Section 11, T4N R9E, B1M
- 91. 1/4 Section 11, T4N R9E, B1M
- 92. 1/4 Section 11, T4N R9E, B1M
- 93. 1/4 Section 11, T4N R9E, B1M
- 94. 1/4 Section 11, T4N R9E, B1M
- 95. 1/4 Section 11, T4N R9E, B1M
- 96. 1/4 Section 11, T4N R9E, B1M
- 97. 1/4 Section 11, T4N R9E, B1M
- 98. 1/4 Section 11, T4N R9E, B1M
- 99. 1/4 Section 11, T4N R9E, B1M
- 100. 1/4 Section 11, T4N R9E, B1M



AGRIAGE

Lot No.	Acres	Value
1	0.25	12500
2	0.25	12500
3	0.25	12500
4	0.25	12500
5	0.25	12500
6	0.25	12500
7	0.25	12500
8	0.25	12500
9	0.25	12500
10	0.25	12500
11	0.25	12500
12	0.25	12500
13	0.25	12500
14	0.25	12500
15	0.25	12500
16	0.25	12500
17	0.25	12500
18	0.25	12500
19	0.25	12500
20	0.25	12500
21	0.25	12500
22	0.25	12500
23	0.25	12500
24	0.25	12500
25	0.25	12500
26	0.25	12500
27	0.25	12500
28	0.25	12500
29	0.25	12500
30	0.25	12500
31	0.25	12500
32	0.25	12500
33	0.25	12500
34	0.25	12500
35	0.25	12500
36	0.25	12500
37	0.25	12500
38	0.25	12500
39	0.25	12500
40	0.25	12500
41	0.25	12500
42	0.25	12500
43	0.25	12500
44	0.25	12500
45	0.25	12500
46	0.25	12500
47	0.25	12500
48	0.25	12500
49	0.25	12500
50	0.25	12500
51	0.25	12500
52	0.25	12500
53	0.25	12500
54	0.25	12500
55	0.25	12500
56	0.25	12500
57	0.25	12500
58	0.25	12500
59	0.25	12500
60	0.25	12500
61	0.25	12500
62	0.25	12500
63	0.25	12500
64	0.25	12500
65	0.25	12500
66	0.25	12500
67	0.25	12500
68	0.25	12500
69	0.25	12500
70	0.25	12500
71	0.25	12500
72	0.25	12500
73	0.25	12500
74	0.25	12500
75	0.25	12500
76	0.25	12500
77	0.25	12500
78	0.25	12500
79	0.25	12500
80	0.25	12500
81	0.25	12500
82	0.25	12500
83	0.25	12500
84	0.25	12500
85	0.25	12500
86	0.25	12500
87	0.25	12500
88	0.25	12500
89	0.25	12500
90	0.25	12500
91	0.25	12500
92	0.25	12500
93	0.25	12500
94	0.25	12500
95	0.25	12500
96	0.25	12500
97	0.25	12500
98	0.25	12500
99	0.25	12500
100	0.25	12500

CURVE DATA

Curve No.	Station	Radius	Chord	Angle
C1	1+00.00	100.00	100.00	90.00
C2	1+100.00	100.00	100.00	90.00
C3	1+200.00	100.00	100.00	90.00
C4	1+300.00	100.00	100.00	90.00
C5	1+400.00	100.00	100.00	90.00
C6	1+500.00	100.00	100.00	90.00
C7	1+600.00	100.00	100.00	90.00
C8	1+700.00	100.00	100.00	90.00
C9	1+800.00	100.00	100.00	90.00
C10	1+900.00	100.00	100.00	90.00
C11	2+000.00	100.00	100.00	90.00
C12	2+100.00	100.00	100.00	90.00
C13	2+200.00	100.00	100.00	90.00
C14	2+300.00	100.00	100.00	90.00
C15	2+400.00	100.00	100.00	90.00
C16	2+500.00	100.00	100.00	90.00
C17	2+600.00	100.00	100.00	90.00
C18	2+700.00	100.00	100.00	90.00
C19	2+800.00	100.00	100.00	90.00
C20	2+900.00	100.00	100.00	90.00
C21	3+000.00	100.00	100.00	90.00
C22	3+100.00	100.00	100.00	90.00
C23	3+200.00	100.00	100.00	90.00
C24	3+300.00	100.00	100.00	90.00
C25	3+400.00	100.00	100.00	90.00
C26	3+500.00	100.00	100.00	90.00
C27	3+600.00	100.00	100.00	90.00
C28	3+700.00	100.00	100.00	90.00
C29	3+800.00	100.00	100.00	90.00
C30	3+900.00	100.00	100.00	90.00
C31	4+000.00	100.00	100.00	90.00
C32	4+100.00	100.00	100.00	90.00
C33	4+200.00	100.00	100.00	90.00
C34	4+300.00	100.00	100.00	90.00
C35	4+400.00	100.00	100.00	90.00
C36	4+500.00	100.00	100.00	90.00
C37	4+600.00	100.00	100.00	90.00
C38	4+700.00	100.00	100.00	90.00
C39	4+800.00	100.00	100.00	90.00
C40	4+900.00	100.00	100.00	90.00
C41	5+000.00	100.00	100.00	90.00
C42	5+100.00	100.00	100.00	90.00
C43	5+200.00	100.00	100.00	90.00
C44	5+300.00	100.00	100.00	90.00
C45	5+400.00	100.00	100.00	90.00
C46	5+500.00	100.00	100.00	90.00
C47	5+600.00	100.00	100.00	90.00
C48	5+700.00	100.00	100.00	90.00
C49	5+800.00	100.00	100.00	90.00
C50	5+900.00	100.00	100.00	90.00
C51	6+000.00	100.00	100.00	90.00
C52	6+100.00	100.00	100.00	90.00
C53	6+200.00	100.00	100.00	90.00
C54	6+300.00	100.00	100.00	90.00
C55	6+400.00	100.00	100.00	90.00
C56	6+500.00	100.00	100.00	90.00
C57	6+600.00	100.00	100.00	90.00
C58	6+700.00	100.00	100.00	90.00
C59	6+800.00	100.00	100.00	90.00
C60	6+900.00	100.00	100.00	90.00
C61	7+000.00	100.00	100.00	90.00
C62	7+100.00	100.00	100.00	90.00
C63	7+200.00	100.00	100.00	90.00
C64	7+300.00	100.00	100.00	90.00
C65	7+400.00	100.00	100.00	90.00
C66	7+500.00	100.00	100.00	90.00
C67	7+600.00	100.00	100.00	90.00
C68	7+700.00	100.00	100.00	90.00
C69	7+800.00	100.00	100.00	90.00
C70	7+900.00	100.00	100.00	90.00
C71	8+000.00	100.00	100.00	90.00
C72	8+100.00	100.00	100.00	90.00



TE THOMPSON ENGINEERING, INC.
CONSULTING ENGINEERS
RIGBY, IDAHO 83442

FINAL PLAT

LOCATED IN THE NE 1/4 OF SECTION 11, TOWNSHIP 4 NORTH, RANGE 9E EAST, JEFFERSON COUNTY, IDAHO

Project Name: Pioneer Land Company
Job Number: 2002-44

Scale: _____

SEE SHEETS 3 OF 3

328452