

BRAINERD ESTIMATES

SCALE

1" = 100'

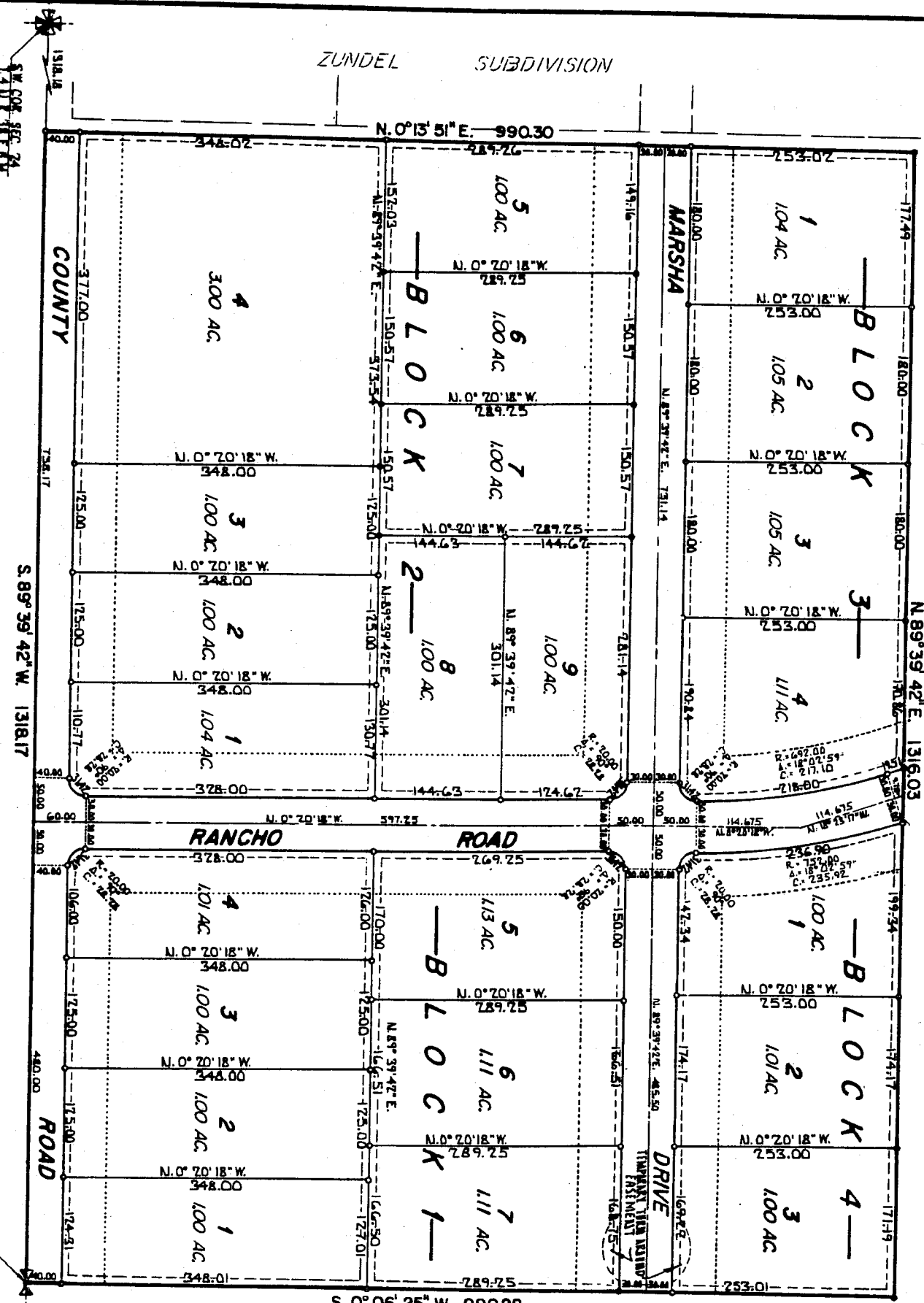
DIVISION NO. 1
JEFFERSON COUNTY, IDAHO
 A PORTION THE SW. 1/4 OF SEC. 24 T. 4 N. R. 38 E. B.M.
 ELLSWORTH ENGINEERING, INC.
 IDAHO FALLS, IDAHO

UNPLATTED

While this is a photographic reproduction of the recorded plat, the Company assumes no liability for variations, if any, with a re-survey.
 FIRST AMERICAN TITLE COMPANY

NOTES
 DESIGNATES IRON RODS
 EASEMENTS & WIDE JUNCTIONS
 OTHERWISE NOTED
 50' BUILDING SETBACK LINE

ZUNDEL SUBDIVISION



S. 0° 06' 25" W. 990.28
 UNPLATTED

1/4 COR SEC 24

1/4 COR SEC 24