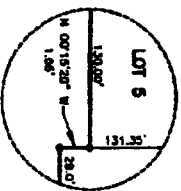
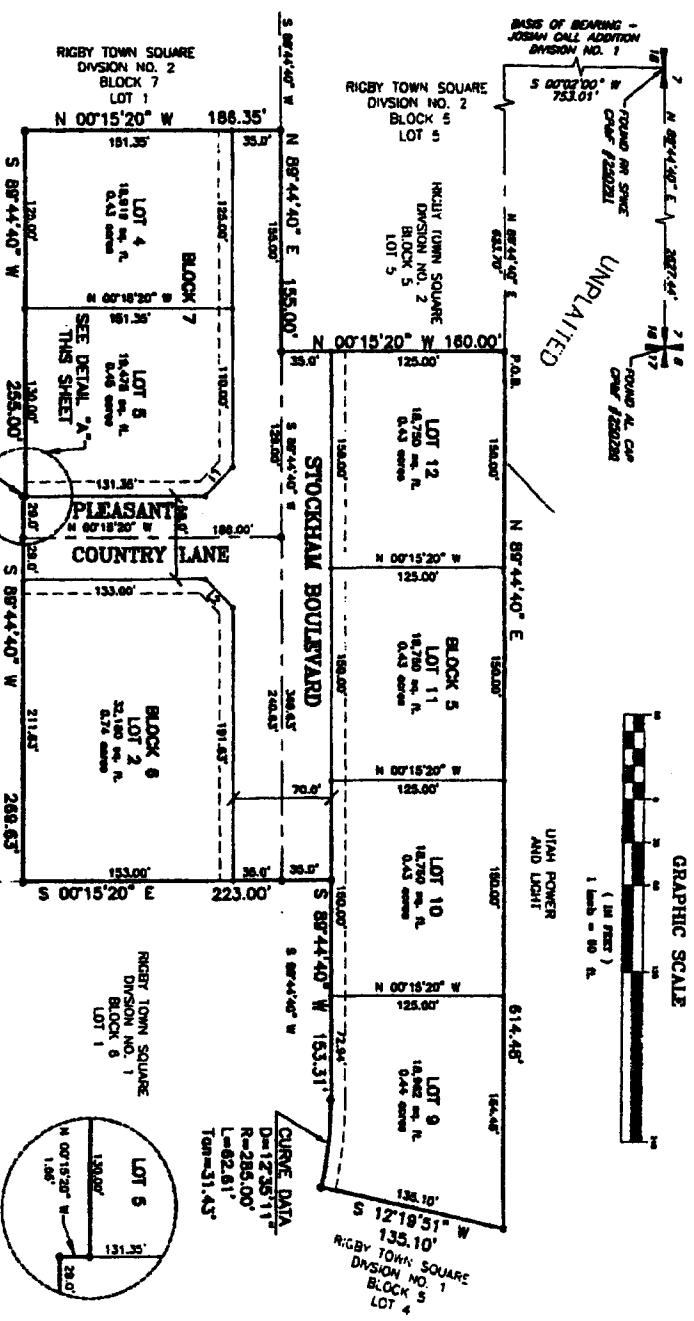
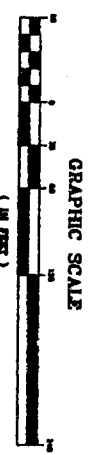


**EXAMINING SURVEYOR**  
 I certify that I have examined this plat and find it to be correct and in accordance with the laws of the State of Idaho.  
 Date: 2-28-03  
 W. L. ...  
 Boise, Idaho

# RIGBY TOWN SQUARE DIVISION NO. 3

AN ADDITION TO THE CITY OF RIGBY, JEFFERSON COUNTY, IDAHO  
 PART OF THE NE 1/4 OF SECTION 18, T. 4 N., R. 39 E., B.M.



**LINE TABLE**

LINE	SECTION	BEARING	DISTANCE
1	1	S 89°44'40" E	155.00'
2	2	S 89°44'40" E	269.65'

**CITY ACCEPTANCE**  
 The undersigned City Engineer has examined the plat and finds it to be correct and in accordance with the laws of the State of Idaho.  
 Date: 2-28-03  
 M. J. ...  
 City Engineer

**IRIGATION WATER RIGHTS RELEASE**  
 I hereby certify that the water rights in and to the water in the ...  
 Date: 2-28-03  
 M. J. ...  
 City Engineer

**HEALTH DEPT. CERTIFICATE**  
 I hereby certify that the plat is in accordance with the laws of the State of Idaho.  
 Date: 2-28-03  
 M. J. ...  
 City Engineer

**TREASURER'S AND ASSESSORS CERTIFICATE**  
 I, the undersigned County Treasurer, do hereby certify that the plat is in accordance with the laws of the State of Idaho.  
 Date: 2-28-03  
 M. J. ...  
 County Treasurer

**RECORDER'S CERTIFICATE**  
 I hereby certify that this plat is in accordance with the laws of the State of Idaho.  
 Date: 2-28-03  
 M. J. ...  
 County Recorder

**BOUNDARY DESCRIPTION**  
 Part of the NE 1/4 of Section 18, Township 4 North, Range 39 East, B.M., Jefferson County, Idaho described as:

Beginning at a point that is S 89°44'40" W 23.10' from the north line of the ...  
 (1) thence N 00°15'20" W 186.00' to the corner of Lot 5, Block 5, of Rigby Town Square Division No. 2;  
 (2) thence S 89°44'40" E 155.00' to the corner of Lot 1, Block 9, of Rigby Town Square Division No. 1;  
 (3) thence S 89°44'40" E 269.65' to the corner of Lot 1, Block 9, of Rigby Town Square Division No. 1;  
 (4) thence S 89°44'40" E 153.31' to the corner of Lot 1, Block 9, of Rigby Town Square Division No. 1;  
 (5) thence S 89°44'40" E 153.31' to the corner of Lot 1, Block 9, of Rigby Town Square Division No. 1;  
 (6) thence S 89°44'40" E 153.31' to the corner of Lot 1, Block 9, of Rigby Town Square Division No. 1;  
 (7) thence S 89°44'40" E 153.31' to the corner of Lot 1, Block 9, of Rigby Town Square Division No. 1;  
 (8) thence S 89°44'40" E 153.31' to the corner of Lot 1, Block 9, of Rigby Town Square Division No. 1;  
 (9) thence S 89°44'40" E 153.31' to the corner of Lot 1, Block 9, of Rigby Town Square Division No. 1;  
 (10) thence S 89°44'40" E 153.31' to the corner of Lot 1, Block 9, of Rigby Town Square Division No. 1;

**OWNER'S DEDICATION**  
 I, the undersigned, do hereby dedicate the above described land to the City of Rigby, Idaho.  
 Date: 2-28-03  
 M. J. ...  
 Owner

**ACKNOWLEDGMENT**  
 I, the undersigned, do hereby acknowledge the above described land to the City of Rigby, Idaho.  
 Date: 2-28-03  
 M. J. ...  
 Acknowledger

**SURVEYOR'S CERTIFICATE**  
 I, the undersigned, do hereby certify that the above described land is in accordance with the laws of the State of Idaho.  
 Date: 2-28-03  
 M. J. ...  
 Surveyor

**HAEPER-LEAVITT ENGINEERING, INC.**  
 PROFESSIONAL ENGINEERS AND LAND SURVEYORS  
 405 N. CENTRAL AVE., P.O. BOX 58001, DANDY HILLS, SANDOZ 83405 (208) 341-8112