

1	2	3	4
5	6	7	8
9	10	11	12
13	14	15	16
17	18	19	20
21	22	23	24
25	26	27	28
29	30	31	32
33	34	35	36
37	38	39	40
41	42	43	44
45	46	47	48
49	50	51	52
53	54	55	56
57	58	59	60
61	62	63	64
65	66	67	68
69	70	71	72
73	74	75	76
77	78	79	80
81	82	83	84
85	86	87	88
89	90	91	92
93	94	95	96
97	98	99	100

RIGBY TOWN SQUARE

DIVISION NO. 4

AN ADDITION TO THE CITY OF RIGBY, JEFFERSON COUNTY, IDAHO BEING A REPLAT OF RIGBY TOWN SQUARE DIVISION NO. 1 BLOCK 6, LOTS 1, 2, 7, 4, N. E. 30 E. B.L.

City	Block	Lot	Area	Owner
1	1	1	0.10	...
1	1	2	0.10	...
1	1	3	0.10	...
1	1	4	0.10	...
1	1	5	0.10	...
1	1	6	0.10	...
1	1	7	0.10	...
1	1	8	0.10	...
1	1	9	0.10	...
1	1	10	0.10	...
1	1	11	0.10	...
1	1	12	0.10	...
1	1	13	0.10	...
1	1	14	0.10	...
1	1	15	0.10	...
1	1	16	0.10	...
1	1	17	0.10	...
1	1	18	0.10	...
1	1	19	0.10	...
1	1	20	0.10	...
1	1	21	0.10	...
1	1	22	0.10	...
1	1	23	0.10	...
1	1	24	0.10	...
1	1	25	0.10	...
1	1	26	0.10	...
1	1	27	0.10	...
1	1	28	0.10	...
1	1	29	0.10	...
1	1	30	0.10	...
1	1	31	0.10	...
1	1	32	0.10	...
1	1	33	0.10	...
1	1	34	0.10	...
1	1	35	0.10	...
1	1	36	0.10	...
1	1	37	0.10	...
1	1	38	0.10	...
1	1	39	0.10	...
1	1	40	0.10	...

RECORDER'S CERTIFICATE

I, County Clerk, do hereby certify that the foregoing plat of the City of Rigby, Town Square, Division No. 4, and being a replat of Rigby Town Square, Division No. 1, Block 6, Lots 1, 2, 7, 4, N. E. 30 E. B.L., was duly recorded in the office of the County Clerk on this 15th day of August, 1934, at 10:30 A.M. and that the same is a true and correct copy of the original as filed for record.

EXAMINING SURVEYOR

I, County Surveyor, do hereby certify that the foregoing plat of the City of Rigby, Town Square, Division No. 4, and being a replat of Rigby Town Square, Division No. 1, Block 6, Lots 1, 2, 7, 4, N. E. 30 E. B.L., was duly examined and found to be a true and correct copy of the original as filed for record.

TREASURER'S AND ASSESSORS CERTIFICATE

I, County Treasurer and Assessor, do hereby certify that the foregoing plat of the City of Rigby, Town Square, Division No. 4, and being a replat of Rigby Town Square, Division No. 1, Block 6, Lots 1, 2, 7, 4, N. E. 30 E. B.L., was duly examined and found to be a true and correct copy of the original as filed for record.

HEALTH DEPT. CERTIFICATE

I, County Health Officer, do hereby certify that the foregoing plat of the City of Rigby, Town Square, Division No. 4, and being a replat of Rigby Town Square, Division No. 1, Block 6, Lots 1, 2, 7, 4, N. E. 30 E. B.L., was duly examined and found to be a true and correct copy of the original as filed for record.

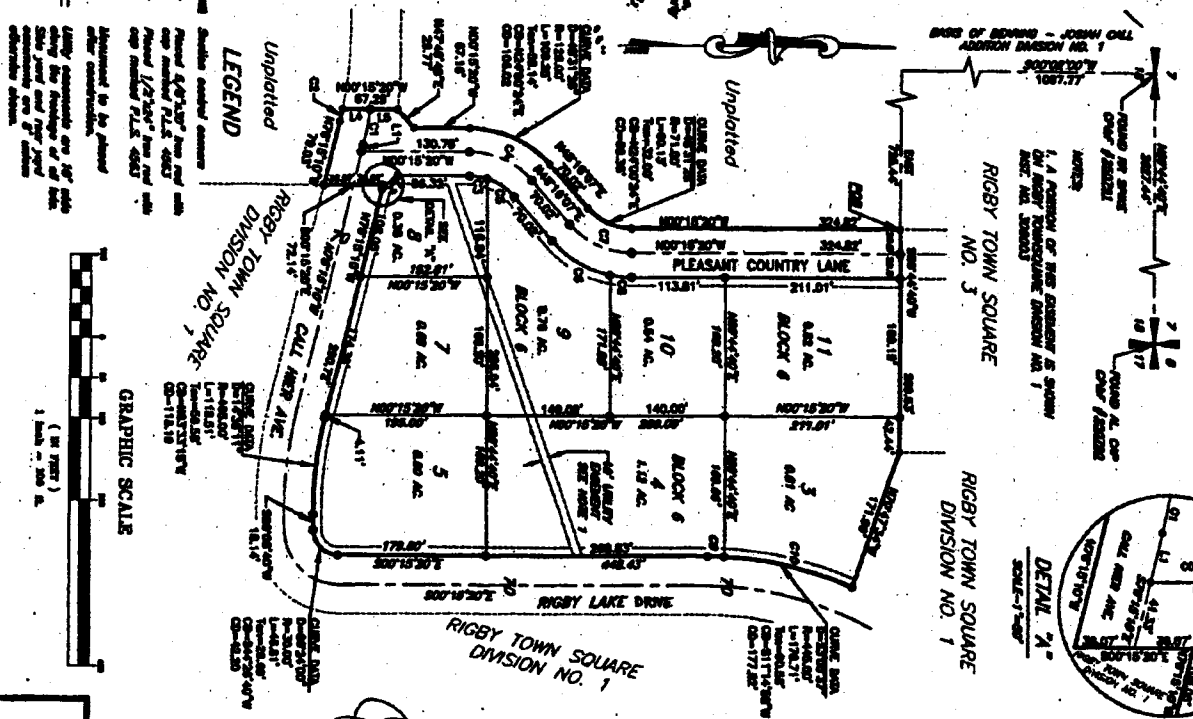
CITY ACCEPTANCE

I, Mayor of the City of Rigby, do hereby certify that the foregoing plat of the City of Rigby, Town Square, Division No. 4, and being a replat of Rigby Town Square, Division No. 1, Block 6, Lots 1, 2, 7, 4, N. E. 30 E. B.L., was duly examined and found to be a true and correct copy of the original as filed for record.

IRRIGATION WATER RIGHTS RELEASE

I, County Clerk, do hereby certify that the foregoing plat of the City of Rigby, Town Square, Division No. 4, and being a replat of Rigby Town Square, Division No. 1, Block 6, Lots 1, 2, 7, 4, N. E. 30 E. B.L., was duly examined and found to be a true and correct copy of the original as filed for record.

HE HARPER-LEAVITT ENGINEERING, INC.
 PROFESSIONAL ENGINEERS AND LAND SURVEYORS
 200 N. CENTRAL AVE., P.O. BOX 20001, BOISE, IDAHO (PH) 534-8111



BOUNDARY DESCRIPTION

Block 6, Lot 1, 2, 7, 4, N. E. 30 E. B.L. ...

OWNER'S DEDICATION

I, the undersigned, do hereby dedicate to the City of Rigby, Idaho, the following described land, to-wit: ...

ACKNOWLEDGMENT

I, the undersigned, do hereby acknowledge the foregoing plat of the City of Rigby, Town Square, Division No. 4, and being a replat of Rigby Town Square, Division No. 1, Block 6, Lots 1, 2, 7, 4, N. E. 30 E. B.L., as a true and correct copy of the original as filed for record.

ACKNOWLEDGMENT

I, the undersigned, do hereby acknowledge the foregoing plat of the City of Rigby, Town Square, Division No. 4, and being a replat of Rigby Town Square, Division No. 1, Block 6, Lots 1, 2, 7, 4, N. E. 30 E. B.L., as a true and correct copy of the original as filed for record.

SURVEYOR'S CERTIFICATE

I, County Surveyor, do hereby certify that the foregoing plat of the City of Rigby, Town Square, Division No. 4, and being a replat of Rigby Town Square, Division No. 1, Block 6, Lots 1, 2, 7, 4, N. E. 30 E. B.L., was duly examined and found to be a true and correct copy of the original as filed for record.

