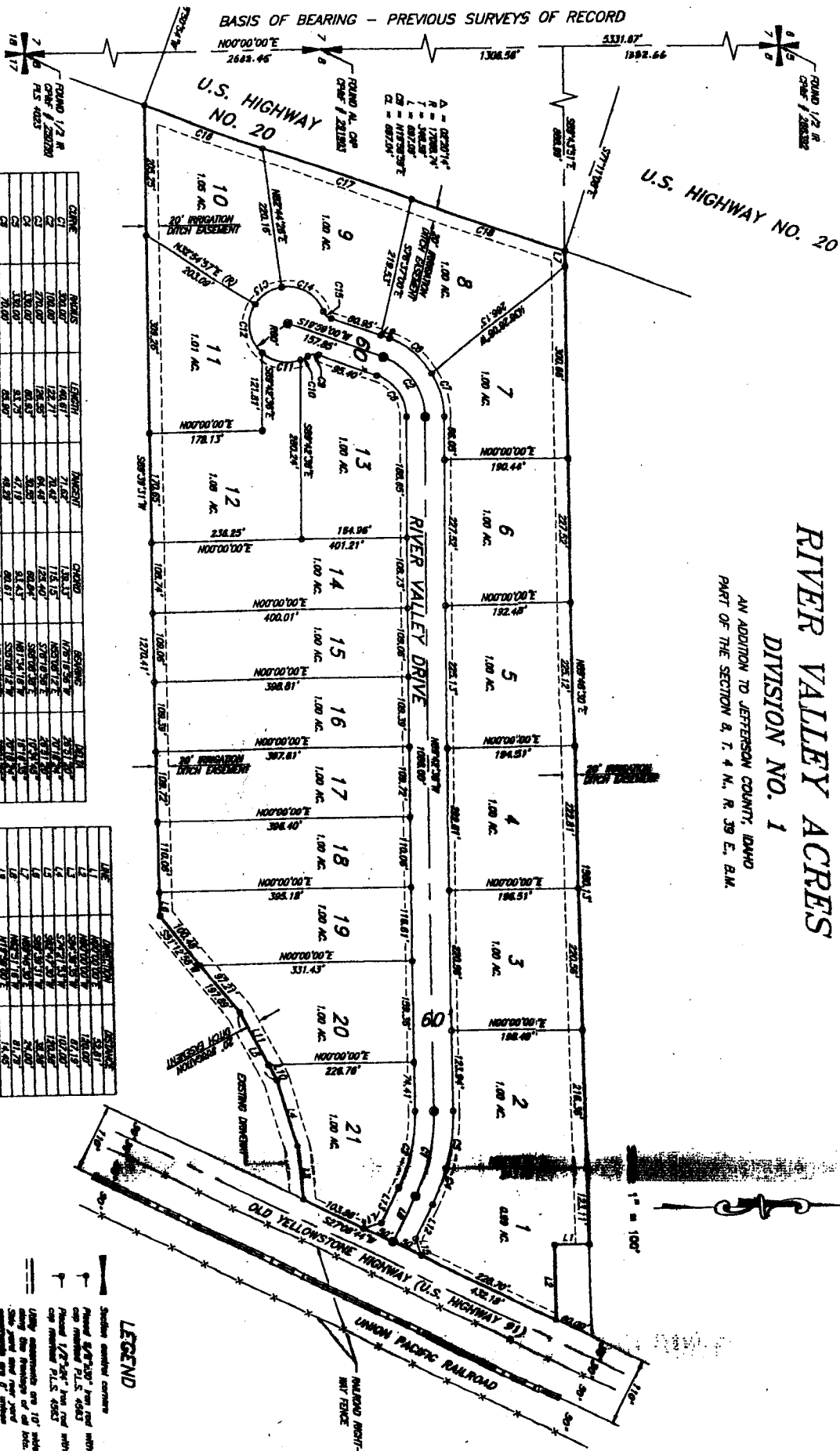


# RIVER VALLEY ACRES

## DIVISION NO. 1

AN ADDITION TO JEFFERSON COUNTY, IDAHO  
PART OF THE SECTION 8, T. 4 N., R. 29 E., B.M.



LINE	BEARING	LENGTH	AREA	REMARKS
C1	N00°00'00"E	178.13'	1.00 AC.	
C2	N00°00'00"E	178.13'	1.00 AC.	
C3	N00°00'00"E	178.13'	1.00 AC.	
C4	N00°00'00"E	178.13'	1.00 AC.	
C5	N00°00'00"E	178.13'	1.00 AC.	
C6	N00°00'00"E	178.13'	1.00 AC.	
C7	N00°00'00"E	178.13'	1.00 AC.	
C8	N00°00'00"E	178.13'	1.00 AC.	
C9	N00°00'00"E	178.13'	1.00 AC.	
C10	N00°00'00"E	178.13'	1.00 AC.	
C11	N00°00'00"E	178.13'	1.00 AC.	
C12	N00°00'00"E	178.13'	1.00 AC.	
C13	N00°00'00"E	178.13'	1.00 AC.	
C14	N00°00'00"E	178.13'	1.00 AC.	
C15	N00°00'00"E	178.13'	1.00 AC.	
C16	N00°00'00"E	178.13'	1.00 AC.	
C17	N00°00'00"E	178.13'	1.00 AC.	
C18	N00°00'00"E	178.13'	1.00 AC.	
C19	N00°00'00"E	178.13'	1.00 AC.	
C20	N00°00'00"E	178.13'	1.00 AC.	
C21	N00°00'00"E	178.13'	1.00 AC.	

LINE	BEARING	LENGTH	AREA	REMARKS
L1	N00°00'00"E	178.13'	1.00 AC.	
L2	N00°00'00"E	178.13'	1.00 AC.	
L3	N00°00'00"E	178.13'	1.00 AC.	
L4	N00°00'00"E	178.13'	1.00 AC.	
L5	N00°00'00"E	178.13'	1.00 AC.	
L6	N00°00'00"E	178.13'	1.00 AC.	
L7	N00°00'00"E	178.13'	1.00 AC.	
L8	N00°00'00"E	178.13'	1.00 AC.	
L9	N00°00'00"E	178.13'	1.00 AC.	
L10	N00°00'00"E	178.13'	1.00 AC.	
L11	N00°00'00"E	178.13'	1.00 AC.	
L12	N00°00'00"E	178.13'	1.00 AC.	
L13	N00°00'00"E	178.13'	1.00 AC.	
L14	N00°00'00"E	178.13'	1.00 AC.	
L15	N00°00'00"E	178.13'	1.00 AC.	

**LEGEND**

- Shaded area: Contour
- Symbol: 1/2" iron rod with cap marked P.L.S. 4083
- Symbol: 1/2" iron rod with cap marked P.L.S. 4083
- Symbol: 1/2" iron rod with cap marked P.L.S. 4083

Lot boundaries are 10' wide along the bearings of all lots. The 10' wide strip may vary from 10' to 12' at the corners. The 10' wide strip may vary from 10' to 12' at the corners. The 10' wide strip may vary from 10' to 12' at the corners.

**HE**  
HARPER-LEAVITT ENGINEERING, INC.  
PROFESSIONAL ENGINEERS AND LAND SURVEYORS  
200 N. Commercial, P.O. Box 8801, Boise, Idaho 83720 (208) 333-8511