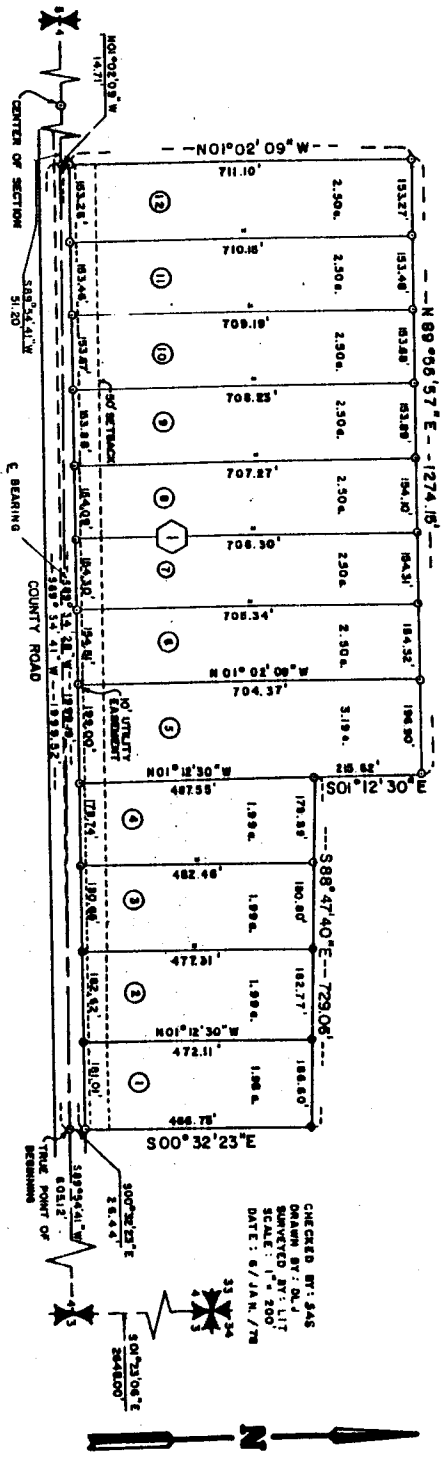


RIVERSIDE SUBDIVISION
DIVISION NO. 1
JEFFERSON COUNTY, STATE OF IDAHO
T4N, R39E, B.M., SEC. 4
SCALE 1" = 200'



THOMPSON ENGINEERING, INC.
LYLE I. THOMPSON CONSULTING ENGINEER
RIGBY ~~~~~ **IDAHO**

While this is a photographic reproduction of the recorded plat, the Company assumes no liability for variations, if any, with a re-survey.

RIGBY TITLE & DEVELOPMENT COMPANY, INC.
RIGBY, IDAHO