

1st AMENDED RUDY ACRES DIVISION NO. 1

A SUBDIVISION OF JEFFERSON COUNTY, IDAHO
PART OF THE NW 1/4 SECTION 30, T. 4N., R. 40E., B.M.

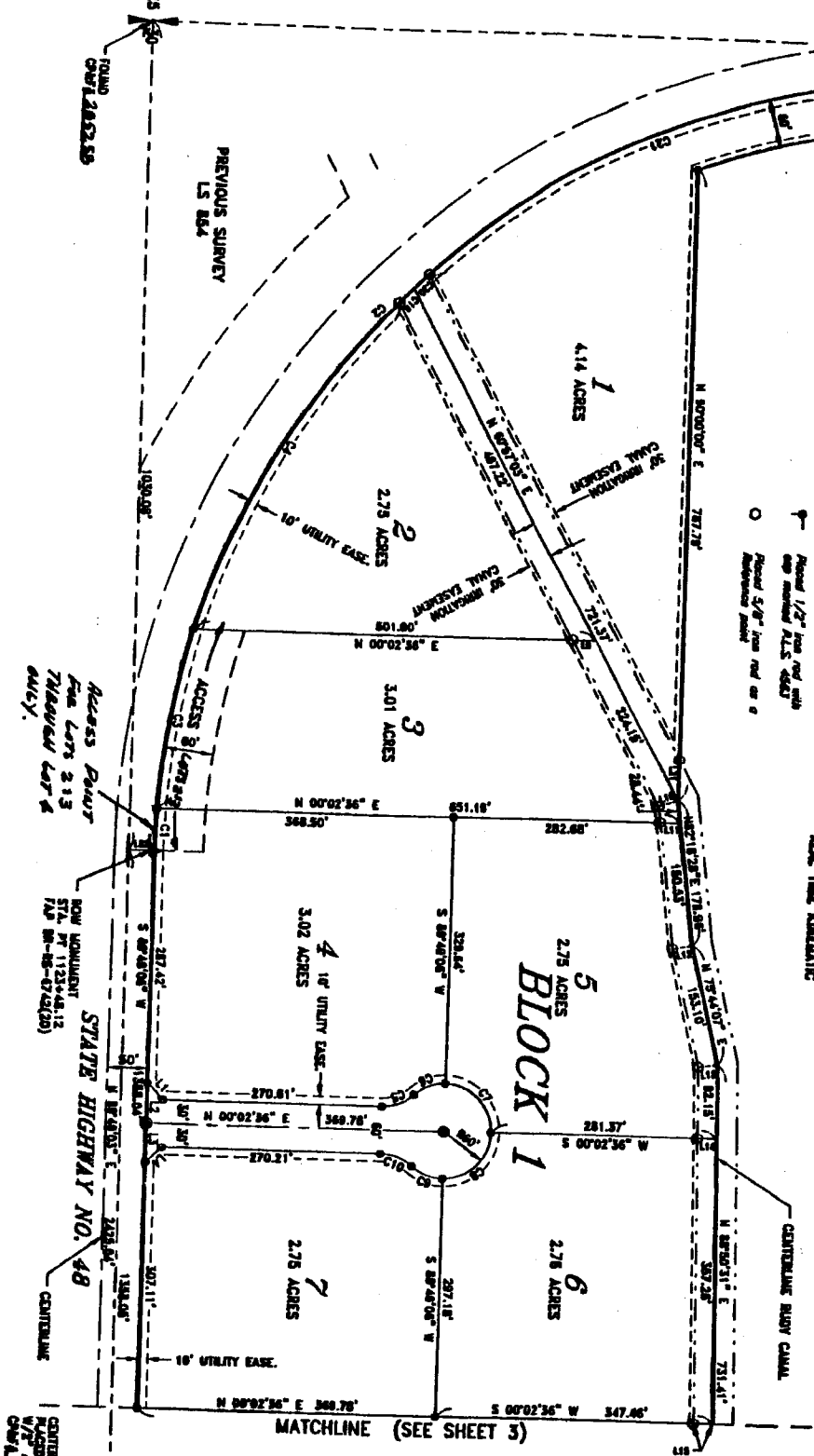
ROW MONUMENT
STL. NO. 1107-112-87
N-26-47-42-20)

SCALE: 1" = 100'



- LEGEND**
- Section corner
 - Row monument
 - Utility easement
 - Access to be placed
 - Row right-of-way monument
 - Row 1/2" iron rod with cap marked R.L.S. 4647
 - Row 5/8" iron rod or 6

BASED ON WAS 84 COORDINATE SYSTEM DERIVED USING TRIMBLE REAL TIME KINEMATIC



CURVE	ANGLE	LENGTH	CHORD	BEARING	BEZEL
C1	90.174°	184.78'	140.13'	N 89.174° W	89.174°
C2	90.174°	227.44'	177.44'	N 89.174° W	89.174°
C3	90.174°	270.11'	220.11'	N 89.174° W	89.174°
C4	90.174°	312.77'	272.77'	N 89.174° W	89.174°
C5	90.174°	355.44'	325.44'	N 89.174° W	89.174°
C6	90.174°	398.11'	378.11'	N 89.174° W	89.174°
C7	90.174°	440.77'	430.77'	N 89.174° W	89.174°
C8	90.174°	483.44'	483.44'	N 89.174° W	89.174°
C9	90.174°	526.11'	536.11'	N 89.174° W	89.174°
C10	90.174°	568.77'	588.77'	N 89.174° W	89.174°
C11	90.174°	611.44'	641.44'	N 89.174° W	89.174°

LINE	DIRECTION	DISTANCE
L1	N 89.174° E	24.25'
L2	S 89.174° W	48.50'
L3	N 89.174° E	72.75'
L4	S 89.174° W	97.00'
L5	N 89.174° E	121.25'
L6	S 89.174° W	145.50'
L7	N 89.174° E	169.75'
L8	S 89.174° W	194.00'
L9	N 89.174° E	218.25'
L10	S 89.174° W	242.50'
L11	N 89.174° E	266.75'
L12	S 89.174° W	291.00'
L13	N 89.174° E	315.25'
L14	S 89.174° W	339.50'
L15	N 89.174° E	363.75'
L16	S 89.174° W	388.00'
L17	N 89.174° E	412.25'
L18	S 89.174° W	436.50'
L19	N 89.174° E	460.75'
L20	S 89.174° W	485.00'
L21	N 89.174° E	509.25'
L22	S 89.174° W	533.50'

HE
HARPER-LEAVITT ENGINEERING, INC.
PROFESSIONAL ENGINEERS AND LAND SURVEYORS
405 N. CENTRAL AVE., 4th FLOOR, BOISE, IDAHO 83725 (208) 333-4112

Rudy Acres 1st Amended