

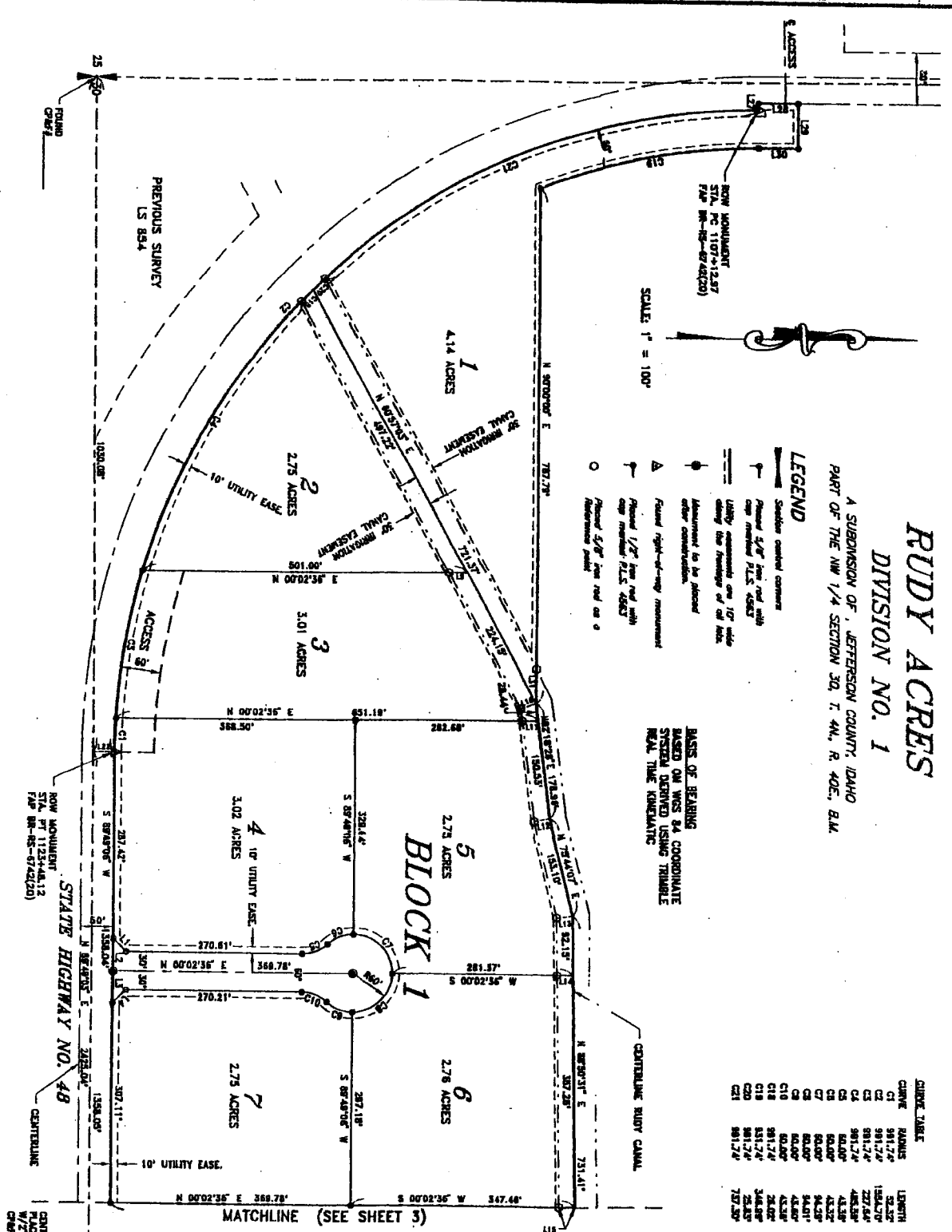
RUDY ACRES DIVISION NO. 1

A SUBDIVISION OF, JEFFERSON COUNTY, IDAHO
PART OF THE NW 1/4 SECTION 30, T. 4N., R. 40E., B.M.

LEGEND

- Section corner
- Point 1/4" from end with top bearing 72.5° 48.83'
- Utility easement one 10' wide along the boundary of all lots.
- Pointment to be placed after construction.
- Pointment to be placed after construction.
- Pointment 1/2" from end with top bearing 72.5° 48.83'
- Pointment 1/2" from end with top bearing 72.5° 48.83'

BASES OF BEARING
BASED ON WAS 84 COORDINATE
SYSTEM DERIVED USING TRIMBLE
REAL TIME KINEMATIC



CURVE TABLE

| CURVE | BEARING | LENGTH | CHORD | BEGINN | DELTA |
|-------|------------|---------|------------|---------|---------|
| C1 | N 81.17° E | 140.32' | N 81.17° W | 0.00172 | 0.00172 |
| C2 | N 81.17° E | 140.32' | N 81.17° W | 0.00172 | 0.00172 |
| C3 | N 81.17° E | 140.32' | N 81.17° W | 0.00172 | 0.00172 |
| C4 | N 81.17° E | 140.32' | N 81.17° W | 0.00172 | 0.00172 |
| C5 | N 81.17° E | 140.32' | N 81.17° W | 0.00172 | 0.00172 |
| C6 | N 81.17° E | 140.32' | N 81.17° W | 0.00172 | 0.00172 |
| C7 | N 81.17° E | 140.32' | N 81.17° W | 0.00172 | 0.00172 |
| C8 | N 81.17° E | 140.32' | N 81.17° W | 0.00172 | 0.00172 |
| C9 | N 81.17° E | 140.32' | N 81.17° W | 0.00172 | 0.00172 |
| C10 | N 81.17° E | 140.32' | N 81.17° W | 0.00172 | 0.00172 |
| C11 | N 81.17° E | 140.32' | N 81.17° W | 0.00172 | 0.00172 |
| C12 | N 81.17° E | 140.32' | N 81.17° W | 0.00172 | 0.00172 |
| C13 | N 81.17° E | 140.32' | N 81.17° W | 0.00172 | 0.00172 |
| C14 | N 81.17° E | 140.32' | N 81.17° W | 0.00172 | 0.00172 |
| C15 | N 81.17° E | 140.32' | N 81.17° W | 0.00172 | 0.00172 |

LINE TABLE

| LINE | DIRECTION | DISTANCE |
|------|------------|----------|
| L1 | N 81.17° E | 140.32' |
| L2 | N 81.17° E | 140.32' |
| L3 | N 81.17° E | 140.32' |
| L4 | N 81.17° E | 140.32' |
| L5 | N 81.17° E | 140.32' |
| L6 | N 81.17° E | 140.32' |
| L7 | N 81.17° E | 140.32' |
| L8 | N 81.17° E | 140.32' |
| L9 | N 81.17° E | 140.32' |
| L10 | N 81.17° E | 140.32' |
| L11 | N 81.17° E | 140.32' |
| L12 | N 81.17° E | 140.32' |
| L13 | N 81.17° E | 140.32' |
| L14 | N 81.17° E | 140.32' |
| L15 | N 81.17° E | 140.32' |

HE
HARPER-LEAVITT ENGINEERING, INC.
PROFESSIONAL ENGINEERS AND LAND SURVEYORS
402 N. CENTRAL AVE., P.O. BOX 50801, SAND FALLS, IDAHO 83404 (208) 534-0712

SHEET 2 OF 3

301866
p12