

# RUDY ACRES

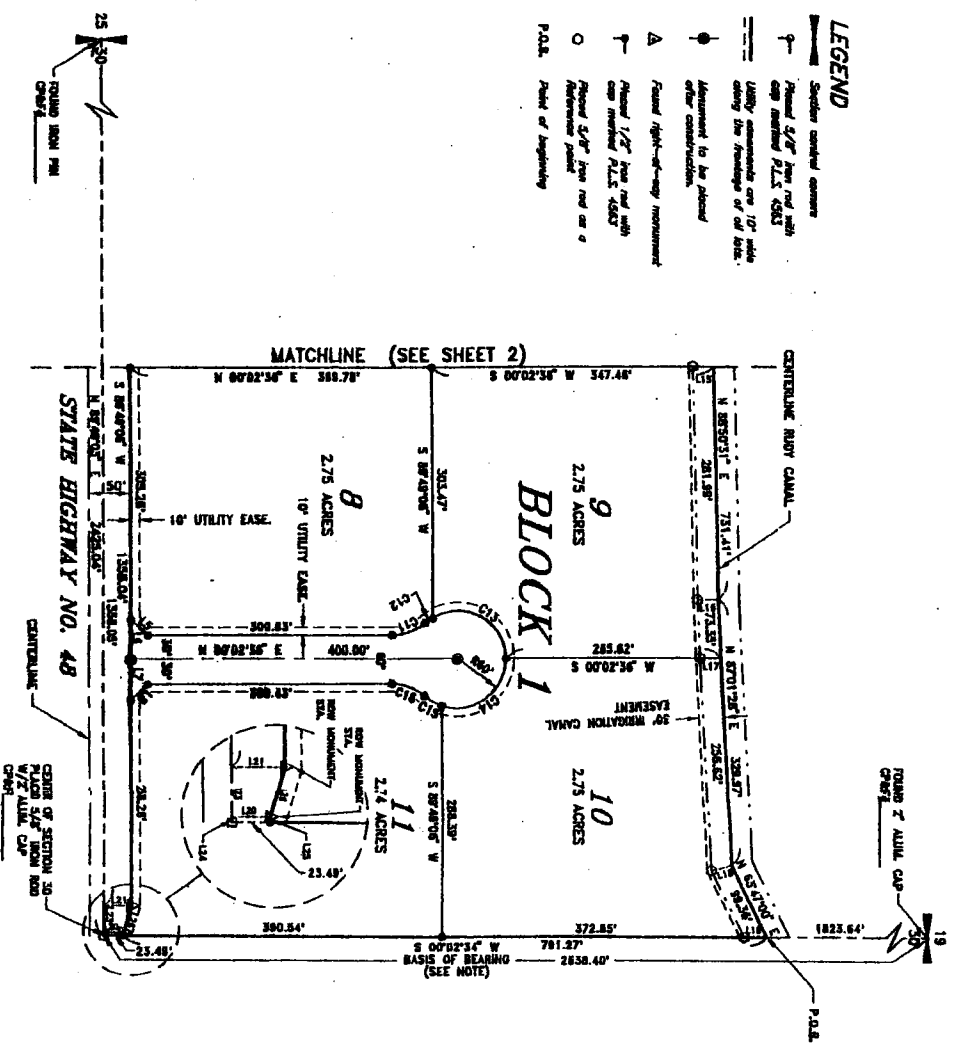
## DIVISION NO. 1

A SUBDIVISION OF JEFFERSON COUNTY, IDAHO  
PART OF THE NW 1/4 SECTION 30, T. 4N., R. 40E., B.M.



SCALE: 1" = 100'

- LEGEND**
- Section corner
  - Proposed 3/4" from road with city marked P.L.L. 4583
  - Utility easements are 10' wide unless otherwise noted.
  - Adjustment to be shown after construction.
  - △ Proposed right-of-way improvement
  - ▽ Proposed 1/2" from road with city marked P.L.L. 4583
  - Proposed 3/4" from road on a proposed street
  - Point of Beginning



**LINE TABLE**

LINE	DIRECTION	DISTANCE
L1	N 45°30'15" E	28.25'
L2	N 88°40'00" E	50.00'
L3	N 88°40'00" E	50.00'
L4	S 48°04'00" E	28.34'
L5	N 00°00'00" E	25.01'
L6	N 00°00'00" W	25.00'
L7	N 00°00'00" W	25.00'
L8	N 00°00'00" W	25.00'
L9	N 00°00'00" W	25.00'
L10	N 00°00'00" W	25.00'
L11	N 00°00'00" W	25.00'
L12	N 00°00'00" W	25.00'
L13	N 00°00'00" W	25.00'
L14	N 00°00'00" W	25.00'
L15	N 00°00'00" W	25.00'
L16	N 00°00'00" W	25.00'
L17	N 00°00'00" W	25.00'
L18	N 00°00'00" W	25.00'
L19	N 00°00'00" W	25.00'
L20	N 00°00'00" W	25.00'
L21	N 00°00'00" W	25.00'
L22	N 00°00'00" W	25.00'
L23	N 00°00'00" W	25.00'
L24	N 00°00'00" W	25.00'
L25	N 00°00'00" W	25.00'
L26	N 00°00'00" W	25.00'
L27	N 00°00'00" W	25.00'
L28	N 00°00'00" W	25.00'
L29	N 00°00'00" W	25.00'
L30	N 00°00'00" W	25.00'
L31	N 00°00'00" W	25.00'
L32	N 00°00'00" W	25.00'
L33	N 00°00'00" W	25.00'
L34	N 00°00'00" W	25.00'
L35	N 00°00'00" W	25.00'
L36	N 00°00'00" W	25.00'
L37	N 00°00'00" W	25.00'
L38	N 00°00'00" W	25.00'
L39	N 00°00'00" W	25.00'
L40	N 00°00'00" W	25.00'
L41	N 00°00'00" W	25.00'
L42	N 00°00'00" W	25.00'
L43	N 00°00'00" W	25.00'
L44	N 00°00'00" W	25.00'
L45	N 00°00'00" W	25.00'
L46	N 00°00'00" W	25.00'
L47	N 00°00'00" W	25.00'
L48	N 00°00'00" W	25.00'
L49	N 00°00'00" W	25.00'
L50	N 00°00'00" W	25.00'
L51	N 00°00'00" W	25.00'
L52	N 00°00'00" W	25.00'
L53	N 00°00'00" W	25.00'
L54	N 00°00'00" W	25.00'
L55	N 00°00'00" W	25.00'
L56	N 00°00'00" W	25.00'
L57	N 00°00'00" W	25.00'
L58	N 00°00'00" W	25.00'
L59	N 00°00'00" W	25.00'
L60	N 00°00'00" W	25.00'
L61	N 00°00'00" W	25.00'
L62	N 00°00'00" W	25.00'
L63	N 00°00'00" W	25.00'
L64	N 00°00'00" W	25.00'
L65	N 00°00'00" W	25.00'
L66	N 00°00'00" W	25.00'
L67	N 00°00'00" W	25.00'
L68	N 00°00'00" W	25.00'
L69	N 00°00'00" W	25.00'
L70	N 00°00'00" W	25.00'
L71	N 00°00'00" W	25.00'
L72	N 00°00'00" W	25.00'
L73	N 00°00'00" W	25.00'
L74	N 00°00'00" W	25.00'
L75	N 00°00'00" W	25.00'
L76	N 00°00'00" W	25.00'
L77	N 00°00'00" W	25.00'
L78	N 00°00'00" W	25.00'
L79	N 00°00'00" W	25.00'
L80	N 00°00'00" W	25.00'
L81	N 00°00'00" W	25.00'
L82	N 00°00'00" W	25.00'
L83	N 00°00'00" W	25.00'
L84	N 00°00'00" W	25.00'
L85	N 00°00'00" W	25.00'
L86	N 00°00'00" W	25.00'
L87	N 00°00'00" W	25.00'
L88	N 00°00'00" W	25.00'
L89	N 00°00'00" W	25.00'
L90	N 00°00'00" W	25.00'
L91	N 00°00'00" W	25.00'
L92	N 00°00'00" W	25.00'
L93	N 00°00'00" W	25.00'
L94	N 00°00'00" W	25.00'
L95	N 00°00'00" W	25.00'
L96	N 00°00'00" W	25.00'
L97	N 00°00'00" W	25.00'
L98	N 00°00'00" W	25.00'
L99	N 00°00'00" W	25.00'
L100	N 00°00'00" W	25.00'

**CURVE TABLE**

CURVE	RADIUS	LENGTH	CHORD	BEARING	DELTA
C11	80.00'	43.30'	43.30'	N 00°00'00" W	172°55'
C12	80.00'	11.40'	11.40'	N 00°00'00" W	172°55'
C13	80.00'	128.18'	104.17'	S 28°48'31" W	120°21'16"
C14	80.00'	113.30'	97.22'	S 28°48'31" W	120°21'16"
C15	80.00'	24.28'	24.12'	S 28°48'31" W	120°21'16"
C16	80.00'	43.30'	42.85'	S 28°48'31" W	120°21'16"

**BASES OF BEARING**  
BASED ON WGS 84 COORDINATE SYSTEM DERIVED USING TRIMBLE REAL TIME KINEMATIC

**HE**  
**HARPER-LEAVITT ENGINEERING, INC.**  
PROFESSIONAL ENGINEERS AND LAND SURVEYORS  
505 N. CENTRAL AVE., P.O. BOX 50001, SAND FALLS, IDAHO 83403 (208) 524-0112

301366 1/4  
SHEET 3 OF 3