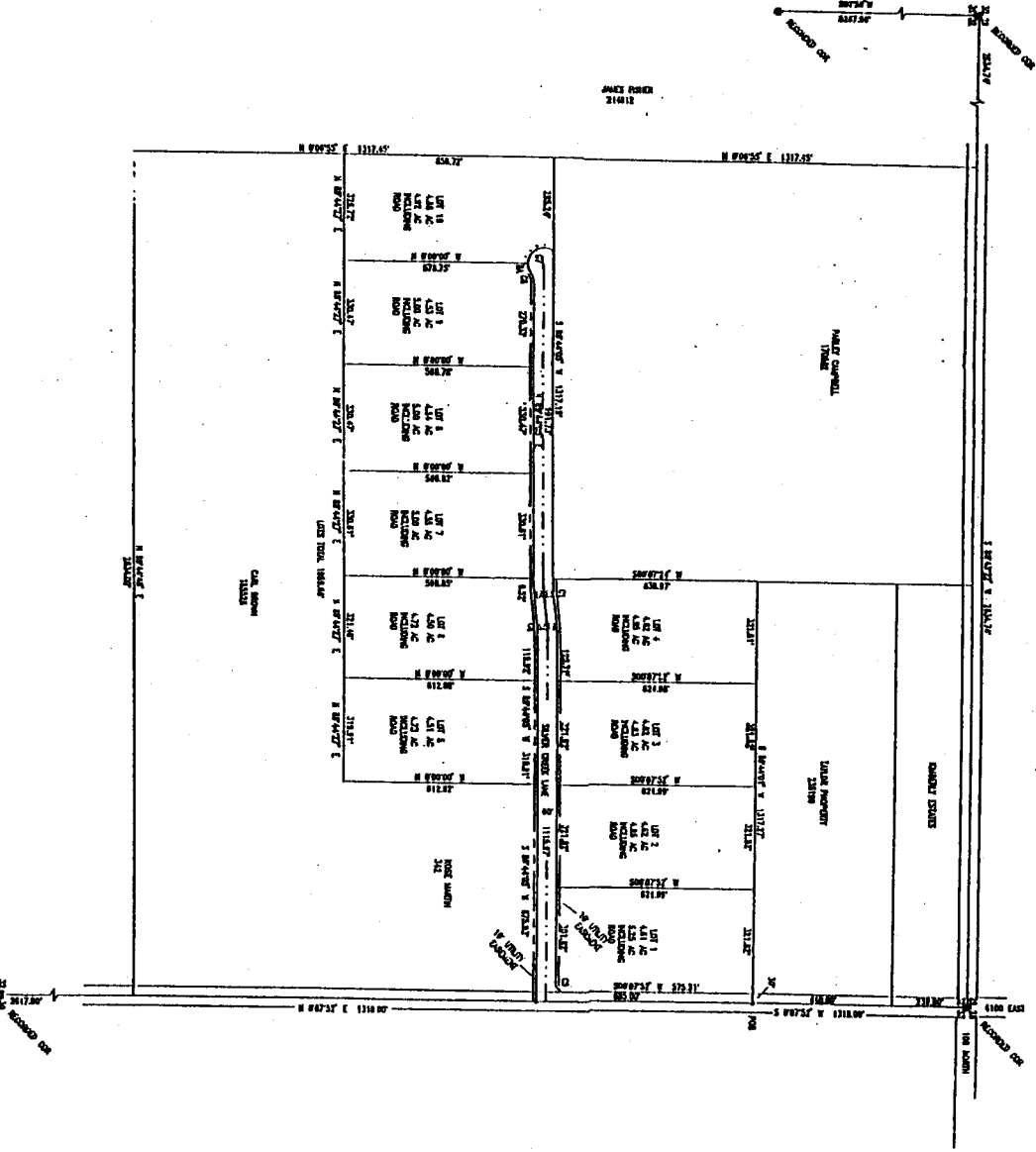


# SILVER CREEK ESTATES

## A PORTION OF S32, T4N, R39E, B.1W JEFFERSON COUNTY, IDAHO

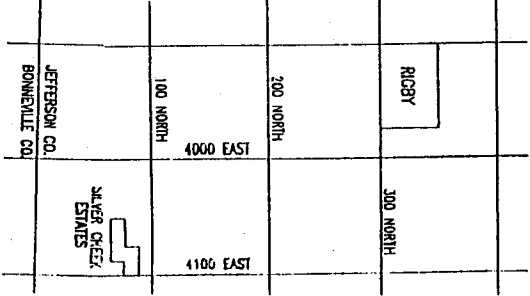
SILVER CREEK ESTATES

LEGEND  
 SCALE 1" = 300'  
 SECTION CORNER  
 QUARTER CORNER  
 ROD WITH YELLOW CAP  
 EXISTING FENCE  
 NOT TO SCALE



BEGINNING AT A POINT THAT IS 679.00 FEET S 00°52'W OF THE NE CORNER OF SECTION 32, T4N, R39E, B.1W, JEFFERSON COUNTY, IDAHO, AND RUNNING  
 THENCE S89°44'01"W 1317.27 FEET;  
 THENCE S00°07'24"W 638.97 FEET;  
 THENCE S89°44'05"W 1317.19 FEET;  
 THENCE S00°06'55"W 658.72 FEET;  
 THENCE N89°44'27"E 1959.66 FEET;  
 THENCE N00°00'00"W 612.92 FEET;  
 THENCE N88°44'05"E 672.92 FEET;  
 THENCE N00°07'52"E 883.00 FEET TO THE POB.  
 CONTAINS 49.67 ACRES, MORE OR LESS.

VACINITY MAP



RECORDER'S CERTIFICATE

I HEREBY CERTIFY THAT THE FOREGOING PLAT OF THE SILVER CREEK ESTATES TO JEFFERSON COUNTY, IDAHO, WAS FILED IN THE OFFICE OF THE RECORDER OF JEFFERSON COUNTY, IDAHO, ON THE 12 DAY OF October 1994 AND RECORDED AS INSTRUMENT NO. 5108265

COUNTY RECORDER DM