

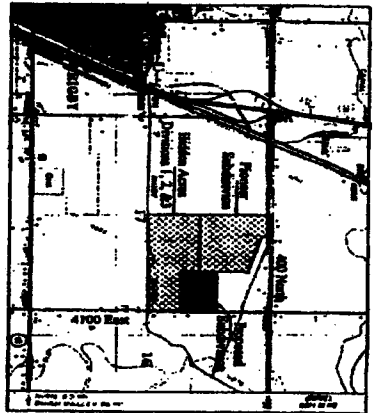
# STEEPLE VIEW SUBDIVISION

DIVISION NO. 1  
JEFFERSON COUNTY, IDAHO

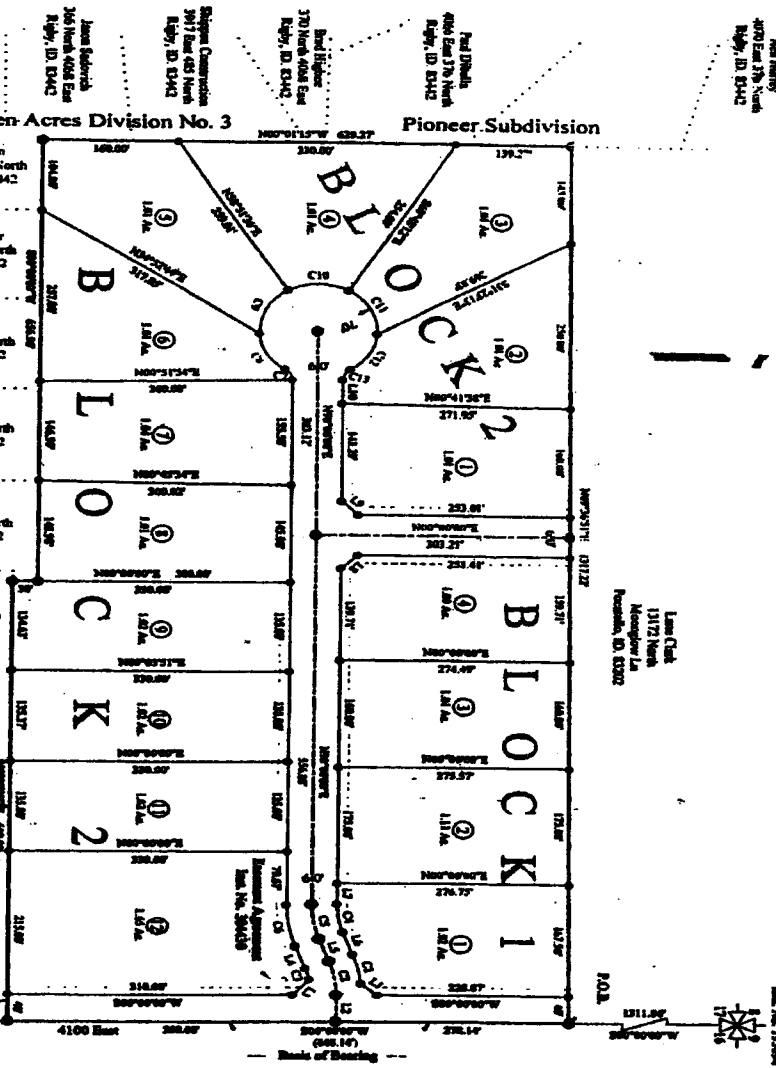
LOCATED IN THE NE 1/4 OF SECTION 17, T4N R39E, B.M.

PLAT NO. 19904  
L.S. No. 19904

Recorded & Indexed  
in the Public Records of Jefferson County, Idaho, in Volume 1  
of the Steeple View Subdivision Plat Book, Book No. 19904  
Page 1 of 2



VICINITY MAP  
(On Sheet)



Mark Layton  
4077 East 356 North  
Rigby, ID 83442

Kenneth Seifner  
4079 East 356 North  
Rigby, ID 83442

Terry Hanson  
4083 East 356 North  
Rigby, ID 83442

Dale Eason  
4085 East 356 North  
Rigby, ID 83442

Bucky Birch  
4087 East 356 North  
Rigby, ID 83442

Laura Waters  
4089 East 356 North  
Rigby, ID 83442

Chris Jones  
P.O. Box 114  
Rigby, ID 83442

Corey Finn  
4093 East 356 North  
Rigby, ID 83442

Rand Thorpe  
4243 East 653 North  
Rigby, ID 83442

Hidden Acres Division No. 3

PLAT NO. 19904  
L.S. No. 19904

Curve No.	Date	Radius	ARC
C1	1/15/97	180.00'	4.89'
C2	3/9/98	150.00'	3.29'
C3	8/27/97	120.00'	1.71'
C4	3/9/98	130.00'	4.18'
C5	3/9/98	130.00'	4.21'
C6	3/9/98	130.00'	4.21'
C7	3/9/98	130.00'	4.21'
C8	3/9/98	130.00'	4.21'
C9	3/9/98	130.00'	4.21'
C10	3/9/98	130.00'	4.21'
C11	3/9/98	130.00'	4.21'
C12	3/9/98	130.00'	4.21'
C13	3/9/98	130.00'	4.21'

Line No.	Distance	Bearing
L1	34.87'	S45°07'59"W
L2	41.07'	N89°00'00"E
L3	30.98'	N89°00'00"E
L4	34.82'	S89°00'00"E
L5	34.82'	N89°00'00"E
L6	34.82'	N89°00'00"E
L7	32.17'	N89°00'00"E
L8	33.00'	N89°00'00"E
L9	28.29'	N89°00'00"E
L10	33.25'	S45°00'00"W

**NOTES:**  
NOTE 1: This subdivision file contains the 500-year Flood Plain as per FEMA Map No. 16031C36.  
NOTE 2: This subdivision file contains the 500-year Flood Plain as per FEMA Map No. 16031C36.  
NOTE 3: The boundaries shown within the City of Rigby, Idaho.  
NOTE 4: The boundaries shown within the City of Rigby, Idaho.  
NOTE 5: The boundaries shown within the City of Rigby, Idaho.  
NOTE 6: All lots to be served by one of the following types of electric service: Rural Power to-ranch, Powerline, or other electric service.  
NOTE 7: All lots to be served by one of the following types of electric service: Rural Power to-ranch, Powerline, or other electric service.  
NOTE 8: All lots to be served by one of the following types of electric service: Rural Power to-ranch, Powerline, or other electric service.  
NOTE 9: All lots to be served by one of the following types of electric service: Rural Power to-ranch, Powerline, or other electric service.  
NOTE 10: All lots to be served by one of the following types of electric service: Rural Power to-ranch, Powerline, or other electric service.

**FINAL PLAT**

LOCATED IN THE NE 1/4 OF SECTION 17, T4N R39E, B.M.  
NORTH RANGE 39 EAST, JEFFERSON COUNTY, IDAHO

Project Name: **BILL CURET**

Job Number: **2003-112**

Date: **March 30, 2004**

Surveyor: **K.L.T.**

Drawn By: **K.L.T.**

Scale: **1" = 100'**

Sheet **2** of **2**

**TE THOMPSON ENGINEERING, INC.**  
CONSULTING ENGINEERS  
RIGBY, IDAHO 83442



**LEGEND**  
 ● 1/4" = 1" 30' from Plat W/C/CP No. 10363  
 ○ 1/4" = 1" 30' from Plat W/C/CP No. 10363  
 --- Adjoined Property Line  
 --- Utility Easement

**BLVDYON**  
Karin L. Thompson, P.L.L.  
161 East Main Street  
Rigby, ID 83442  
(208) 765-8771  
(208) 765-8774

**LAND DEVELOPER**  
Bill Curet / Devin Bishop  
4100 East 371 North  
Rigby, ID 83442  
(208) 765-8771  
(208) 765-8774

**ACREAGE**  
Total Subdivision: 19.60 Acres  
16.16 Acres  
Dedicated County Road: 2.88 Acres