

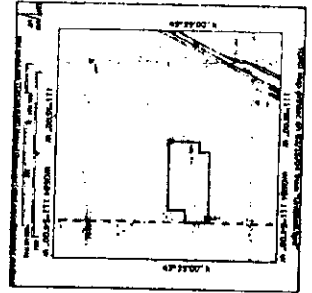
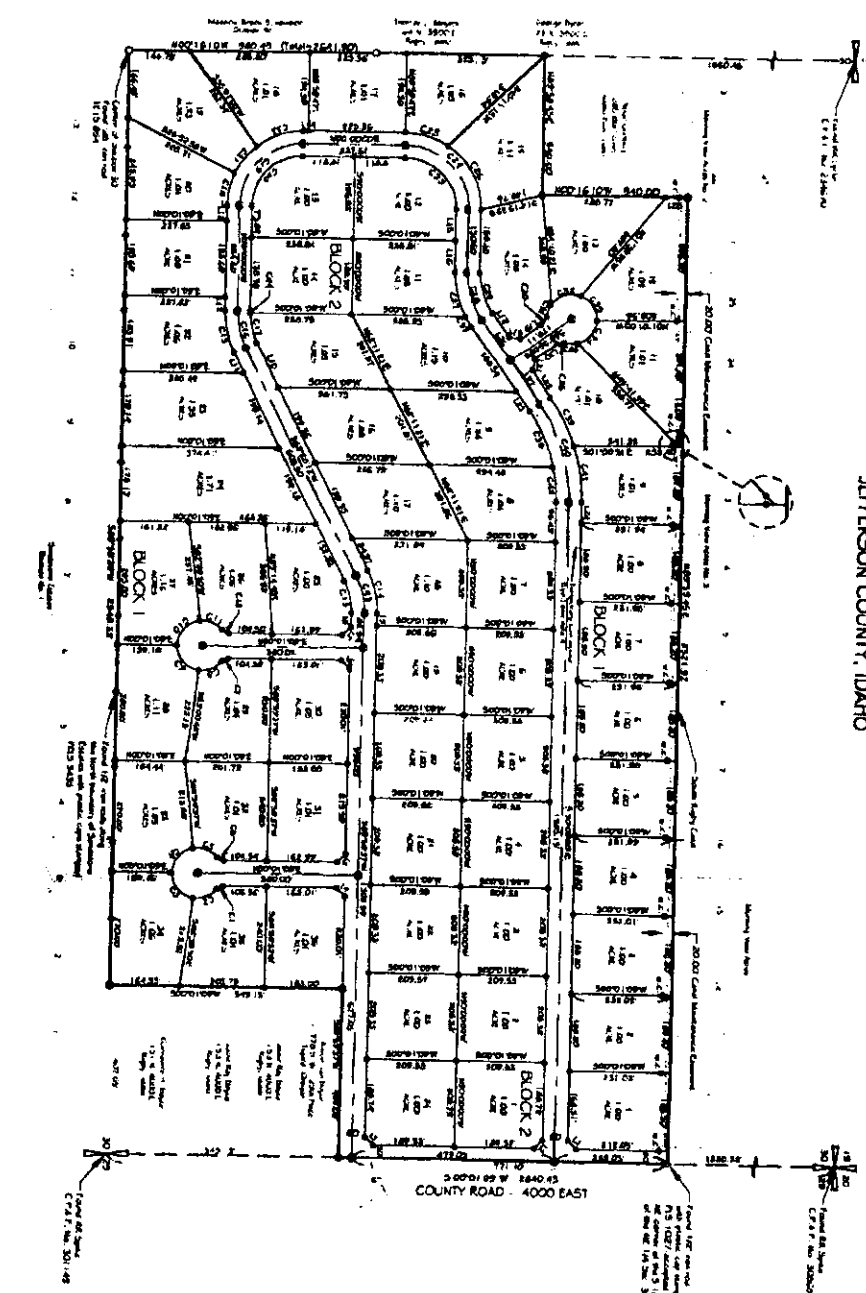
STONEGATE SUBDIVISION DIVISION NO. 1

PART OF THE SOUTH 1/2 OF THE NE 1/4 OF SECTION 30,
TOWNSHIP 4 NORTH, RANGE 39 EAST, B.M.
JEFFERSON COUNTY, IDAHO

Instrument # 330807
 State of Idaho
 County of Jefferson
 City of Layton
 Registered Professional Engineer
 License No. 11,111
 Date of Issue: 11/11/11

LINE TABLE

LINE NO.	START POINT	END POINT	LENGTH	BEARING
1	10+00	11+00	100.00	S 00° 00' 00" E
2	11+00	12+00	100.00	S 00° 00' 00" E
3	12+00	13+00	100.00	S 00° 00' 00" E
4	13+00	14+00	100.00	S 00° 00' 00" E
5	14+00	15+00	100.00	S 00° 00' 00" E
6	15+00	16+00	100.00	S 00° 00' 00" E
7	16+00	17+00	100.00	S 00° 00' 00" E
8	17+00	18+00	100.00	S 00° 00' 00" E
9	18+00	19+00	100.00	S 00° 00' 00" E
10	19+00	20+00	100.00	S 00° 00' 00" E
11	20+00	21+00	100.00	S 00° 00' 00" E
12	21+00	22+00	100.00	S 00° 00' 00" E
13	22+00	23+00	100.00	S 00° 00' 00" E
14	23+00	24+00	100.00	S 00° 00' 00" E
15	24+00	25+00	100.00	S 00° 00' 00" E
16	25+00	26+00	100.00	S 00° 00' 00" E
17	26+00	27+00	100.00	S 00° 00' 00" E
18	27+00	28+00	100.00	S 00° 00' 00" E
19	28+00	29+00	100.00	S 00° 00' 00" E
20	29+00	30+00	100.00	S 00° 00' 00" E
21	30+00	31+00	100.00	S 00° 00' 00" E
22	31+00	32+00	100.00	S 00° 00' 00" E
23	32+00	33+00	100.00	S 00° 00' 00" E
24	33+00	34+00	100.00	S 00° 00' 00" E
25	34+00	35+00	100.00	S 00° 00' 00" E
26	35+00	36+00	100.00	S 00° 00' 00" E
27	36+00	37+00	100.00	S 00° 00' 00" E



NOTES

- 1) Refer to the governing County Zoning Ordinance for proper building setback, height, and other regulations. All proposed improvements shall conform to the governing County Ordinance, including but not limited to:
 - a. Building setbacks, including front, side, and rear setbacks.
 - b. Maximum building height.
 - c. Lot coverage.
 - d. Other applicable zoning regulations.
- 2) The fillet of a curve shall be a minimum of 10 feet, unless otherwise specified.
- 3) All lots shall be subject to the standard egress system that shall be a minimum of 10 feet wide, unless otherwise specified.
- 4) A complete set of plans, including all necessary information for the construction of the subdivision, shall be submitted to the Jefferson County Planning Department for review and approval.

CURVE TABLE

STATION	LENGTH	RADIUS	DELTA	CHORD	CHORD BEARING
0+00	17.31	20.00	217.90°	17.31	S 89° 57' 52" E
17.31	17.31	20.00	217.90°	34.62	S 89° 57' 52" E
34.62	17.31	20.00	217.90°	51.93	S 89° 57' 52" E
51.93	17.31	20.00	217.90°	69.24	S 89° 57' 52" E
69.24	17.31	20.00	217.90°	86.55	S 89° 57' 52" E
86.55	17.31	20.00	217.90°	103.86	S 89° 57' 52" E
103.86	17.31	20.00	217.90°	121.17	S 89° 57' 52" E
121.17	17.31	20.00	217.90°	138.48	S 89° 57' 52" E
138.48	17.31	20.00	217.90°	155.79	S 89° 57' 52" E
155.79	17.31	20.00	217.90°	173.10	S 89° 57' 52" E
173.10	17.31	20.00	217.90°	190.41	S 89° 57' 52" E
190.41	17.31	20.00	217.90°	207.72	S 89° 57' 52" E
207.72	17.31	20.00	217.90°	225.03	S 89° 57' 52" E
225.03	17.31	20.00	217.90°	242.34	S 89° 57' 52" E
242.34	17.31	20.00	217.90°	259.65	S 89° 57' 52" E
259.65	17.31	20.00	217.90°	276.96	S 89° 57' 52" E
276.96	17.31	20.00	217.90°	294.27	S 89° 57' 52" E
294.27	17.31	20.00	217.90°	311.58	S 89° 57' 52" E
311.58	17.31	20.00	217.90°	328.89	S 89° 57' 52" E
328.89	17.31	20.00	217.90°	346.20	S 89° 57' 52" E
346.20	17.31	20.00	217.90°	363.51	S 89° 57' 52" E
363.51	17.31	20.00	217.90°	380.82	S 89° 57' 52" E
380.82	17.31	20.00	217.90°	398.13	S 89° 57' 52" E
398.13	17.31	20.00	217.90°	415.44	S 89° 57' 52" E
415.44	17.31	20.00	217.90°	432.75	S 89° 57' 52" E
432.75	17.31	20.00	217.90°	450.06	S 89° 57' 52" E
450.06	17.31	20.00	217.90°	467.37	S 89° 57' 52" E
467.37	17.31	20.00	217.90°	484.68	S 89° 57' 52" E
484.68	17.31	20.00	217.90°	501.99	S 89° 57' 52" E
501.99	17.31	20.00	217.90°	519.30	S 89° 57' 52" E
519.30	17.31	20.00	217.90°	536.61	S 89° 57' 52" E
536.61	17.31	20.00	217.90°	553.92	S 89° 57' 52" E
553.92	17.31	20.00	217.90°	571.23	S 89° 57' 52" E
571.23	17.31	20.00	217.90°	588.54	S 89° 57' 52" E
588.54	17.31	20.00	217.90°	605.85	S 89° 57' 52" E
605.85	17.31	20.00	217.90°	623.16	S 89° 57' 52" E
623.16	17.31	20.00	217.90°	640.47	S 89° 57' 52" E
640.47	17.31	20.00	217.90°	657.78	S 89° 57' 52" E
657.78	17.31	20.00	217.90°	675.09	S 89° 57' 52" E
675.09	17.31	20.00	217.90°	692.40	S 89° 57' 52" E
692.40	17.31	20.00	217.90°	709.71	S 89° 57' 52" E
709.71	17.31	20.00	217.90°	727.02	S 89° 57' 52" E
727.02	17.31	20.00	217.90°	744.33	S 89° 57' 52" E
744.33	17.31	20.00	217.90°	761.64	S 89° 57' 52" E
761.64	17.31	20.00	217.90°	778.95	S 89° 57' 52" E
778.95	17.31	20.00	217.90°	796.26	S 89° 57' 52" E
796.26	17.31	20.00	217.90°	813.57	S 89° 57' 52" E
813.57	17.31	20.00	217.90°	830.88	S 89° 57' 52" E
830.88	17.31	20.00	217.90°	848.19	S 89° 57' 52" E
848.19	17.31	20.00	217.90°	865.50	S 89° 57' 52" E
865.50	17.31	20.00	217.90°	882.81	S 89° 57' 52" E
882.81	17.31	20.00	217.90°	900.12	S 89° 57' 52" E
900.12	17.31	20.00	217.90°	917.43	S 89° 57' 52" E
917.43	17.31	20.00	217.90°	934.74	S 89° 57' 52" E
934.74	17.31	20.00	217.90°	952.05	S 89° 57' 52" E
952.05	17.31	20.00	217.90°	969.36	S 89° 57' 52" E
969.36	17.31	20.00	217.90°	986.67	S 89° 57' 52" E
986.67	17.31	20.00	217.90°	1003.98	S 89° 57' 52" E
1003.98	17.31	20.00	217.90°	1021.29	S 89° 57' 52" E
1021.29	17.31	20.00	217.90°	1038.60	S 89° 57' 52" E
1038.60	17.31	20.00	217.90°	1055.91	S 89° 57' 52" E
1055.91	17.31	20.00	217.90°	1073.22	S 89° 57' 52" E
1073.22	17.31	20.00	217.90°	1090.53	S 89° 57' 52" E
1090.53	17.31	20.00	217.90°	1107.84	S 89° 57' 52" E
1107.84	17.31	20.00	217.90°	1125.15	S 89° 57' 52" E
1125.15	17.31	20.00	217.90°	1142.46	S 89° 57' 52" E
1142.46	17.31	20.00	217.90°	1159.77	S 89° 57' 52" E
1159.77	17.31	20.00	217.90°	1177.08	S 89° 57' 52" E
1177.08	17.31	20.00	217.90°	1194.39	S 89° 57' 52" E
1194.39	17.31	20.00	217.90°	1211.70	S 89° 57' 52" E
1211.70	17.31	20.00	217.90°	1229.01	S 89° 57' 52" E
1229.01	17.31	20.00	217.90°	1246.32	S 89° 57' 52" E
1246.32	17.31	20.00	217.90°	1263.63	S 89° 57' 52" E
1263.63	17.31	20.00	217.90°	1280.94	S 89° 57' 52" E
1280.94	17.31	20.00	217.90°	1298.25	S 89° 57' 52" E
1298.25	17.31	20.00	217.90°	1315.56	S 89° 57' 52" E
1315.56	17.31	20.00	217.90°	1332.87	S 89° 57' 52" E
1332.87	17.31	20.00	217.90°	1350.18	S 89° 57' 52" E
1350.18	17.31	20.00	217.90°	1367.49	S 89° 57' 52" E
1367.49	17.31	20.00	217.90°	1384.80	S 89° 57' 52" E
1384.80	17.31	20.00	217.90°	1402.11	S 89° 57' 52" E
1402.11	17.31	20.00	217.90°	1419.42	S 89° 57' 52" E
1419.42	17.31	20.00	217.90°	1436.73	S 89° 57' 52" E
1436.73	17.31	20.00	217.90°	1454.04	S 89° 57' 52" E
1454.04	17.31	20.00	217.90°	1471.35	S 89° 57' 52" E
1471.35	17.31	20.00	217.90°	1488.66	S 89° 57' 52" E
1488.66	17.31	20.00	217.90°	1505.97	S 89° 57' 52" E
1505.97	17.31	20.00	217.90°	1523.28	S 89° 57' 52" E
1523.28	17.31	20.00	217.90°	1540.59	S 89° 57' 52" E
1540.59	17.31	20.00	217.90°	1557.90	S 89° 57' 52" E
1557.90	17.31	20.00	217.90°	1575.21	S 89° 57' 52" E
1575.21	17.31	20.00	217.90°	1592.52	S 89° 57' 52" E
1592.52	17.31	20.00	217.90°	1609.83	S 89° 57' 52" E
1609.83	17.31	20.00	217.90°	1627.14	S 89° 57' 52" E
1627.14	17.31	20.00	217.90°	1644.45	S 89° 57' 52" E
1644.45	17.31	20.00	217.90°	1661.76	S 89° 57' 52" E
1661.76	17.31	20.00	217.90°	1679.07	S 89° 57' 52" E
1679.07	17.31	20.00	217.90°	1696.38	S 89° 57' 52" E
1696.38	17.31	20.00	217.90°	1713.69	S 89° 57' 52" E
1713.69	17.31	20.00	217.90°	1731.00	S 89° 57' 52" E
1731.00	17.31	20.00	217.90°	1748.31	S 89° 57' 52" E
1748.31	17.31	20.00	217.90°	1765.62	S 89° 57' 52" E
1765.62	17.31	20.00	217.90°	1782.93	S 89° 57' 52" E
1782.93	17.31	20.00	217.90°	1800.24	S 89° 57' 52" E
1800.24	17.31	20.00	217.90°	1817.55	S 89° 57' 52" E
1817.55	17.31	20.00	217.90°	1834.86	S 89° 57' 52" E
1834.86	17.31	20.00	217.90°	1852.17	S 89° 57' 52" E
1852.17	17.31	20.00	217.90°	1869.48	S 89° 57' 52" E
1869.48	17.31	20.00	217.90°	1886.79	S 89° 57' 52" E
1886.79	17.31	20.00	217.90°	1904.10	S 89° 57' 52" E
1904.10	17.31	20.00	217.90°	1921.41	S 89° 57' 52" E
1921.41	17.31	20.00	217.90°	1938.72	S 89° 57' 52" E
1938.72	17.31	20.00	217.90°	1956.03	S 89° 57' 52" E
1956.03	17.31	20.00	217.90°	1973.34	S 89° 57' 52" E
1973.34	17.31	20.00	217.90°	1990.65	S 89° 57' 52" E
1990.65	17.31	20.00	217.90°	2007.96	S 89° 57' 52" E
2007.96	17.31	20.00	217.90°	2025.27	S 89° 57' 52" E
2025.27	17.31	20.00	217.90°	2042.58	S 89° 57' 52" E
2042.58	17.31	20.00	217.90°	2059.89	S 89° 57' 52" E
2059.89	17.31	20.00	217.90°	2077.20	S 89° 57' 52" E
2077.20	17.31	20.00	217.90°	2094.51	S 89° 57' 52" E
2094.51	17.31	20.00	217.90°	2111.82	S 89° 57' 52" E
2111.82	17.31	20.00	217.90°	2129.13	S 89° 57' 52" E
2129.13	17.31	20.00	217.90°	2146.44	S 89° 57' 52" E
2146.44	17.31	20.00	217.90°	2163.75	S 89° 57' 52" E
2163.75	17.31	20.00	217.90°	2181.06	S 89° 57' 52" E
2181.06	17.31	20.00	217.90°	2198.37	