

STONY BROOKE ESTATES

DIVISION NO. 1
JEFFERSON COUNTY, IDAHO
LOCATED IN THE SW 1/4 OF SECTION 12, T4N 33E, R3E

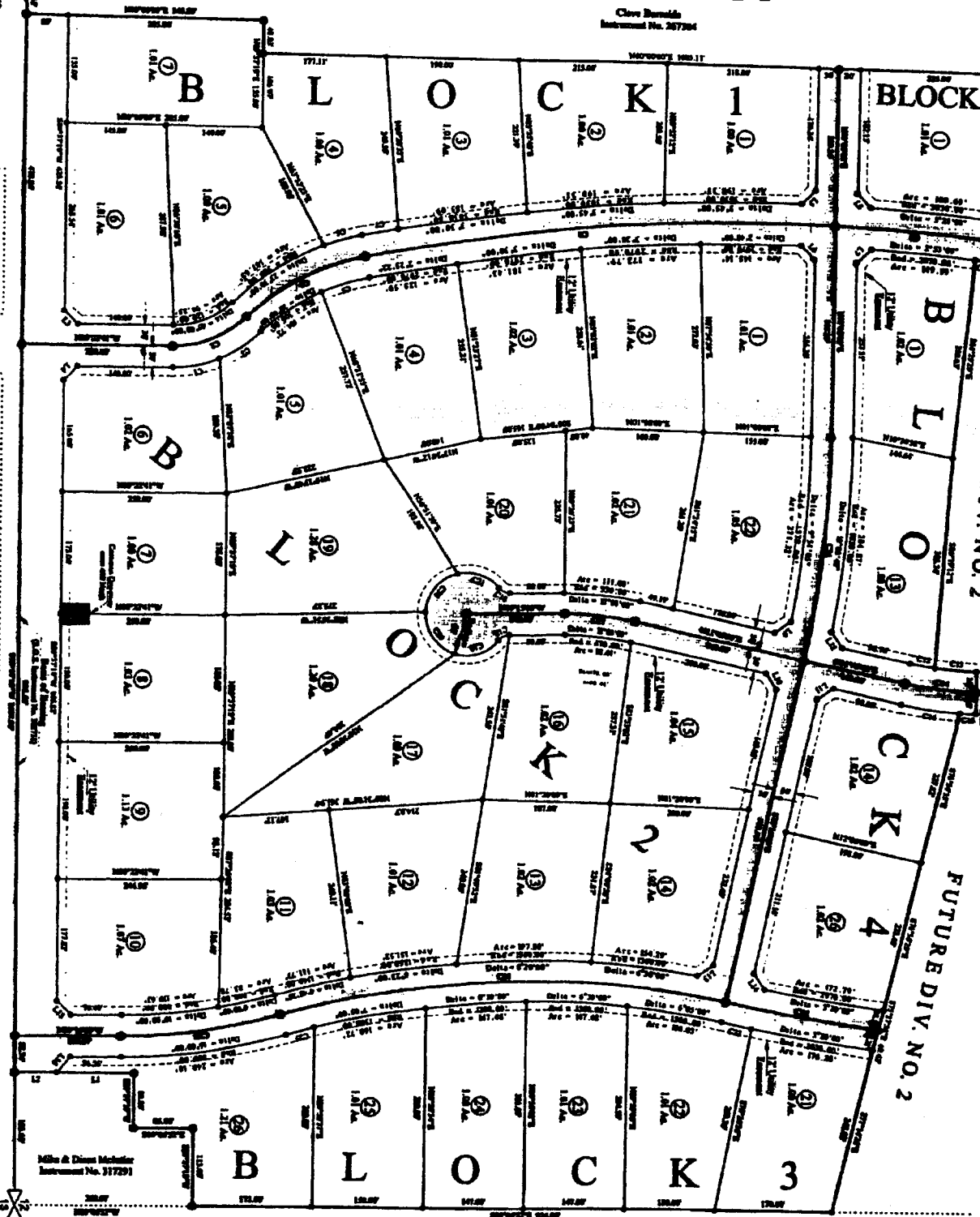
FUTURE DIV. NO. 2

FUTURE DIV. NO. 2

ACREAGE
Total Acreage: 34.84 Acres
47 Lots
Residential County Road - 7.54 Acres

UNPLATTED

Cave Remarks
Instrument No. 267264



WESTWIND ESTATES

Curve No.	Radius	Delta	Area
C1	18.00	27.00°	48.12
C2	18.00	27.00°	72.30
C3	18.00	27.00°	112.17
C4	18.00	27.00°	72.30
C5	18.00	27.00°	48.12
C6	18.00	27.00°	48.12
C7	18.00	27.00°	72.30
C8	18.00	27.00°	112.17
C9	18.00	27.00°	72.30
C10	18.00	27.00°	48.12
C11	18.00	27.00°	48.12
C12	18.00	27.00°	72.30
C13	18.00	27.00°	112.17
C14	18.00	27.00°	72.30
C15	18.00	27.00°	48.12
C16	18.00	27.00°	48.12
C17	18.00	27.00°	72.30
C18	18.00	27.00°	112.17
C19	18.00	27.00°	72.30
C20	18.00	27.00°	48.12
C21	18.00	27.00°	48.12
C22	18.00	27.00°	72.30
C23	18.00	27.00°	112.17
C24	18.00	27.00°	72.30
C25	18.00	27.00°	48.12
C26	18.00	27.00°	48.12
C27	18.00	27.00°	72.30
C28	18.00	27.00°	112.17
C29	18.00	27.00°	72.30
C30	18.00	27.00°	48.12

Line No.	Distance	Bearing
L1	115.00	S07°05'27"E
L2	61.00	S07°05'27"E
L3	28.28	S45°27'17"W
L4	28.28	N45°27'17"E
L5	28.45	S48°41'17"E
L6	28.12	N48°28'12"E
L7	28.92	N48°41'27"W
L8	27.65	S49°10'07"W
L9	28.74	S49°10'07"E
L10	28.28	N48°41'07"E
L11	28.28	N48°41'07"E
L12	27.85	S37°52'54"W
L13	27.77	S49°11'17"E
L14	28.52	S49°11'55"W
L15	28.52	S49°11'55"W
L16	30.37	N49°09'27"W

LAND DEVELOPMENT
Kevin L. Thompson, P.E.
154 East Main Street
Boise, ID 83743
CND No. 0771
(208) 333-4488

LEGEND
 1/4 Section X 3/4 Section Subdiv. No. 304
 1/2 Section X 3/4 Section Subdiv. No. 303A
 1/2 Section X 3/4 Section Subdiv. No. 303B
 1/2 Section X 3/4 Section Subdiv. No. 303C
 1/2 Section X 3/4 Section Subdiv. No. 303D
 1/2 Section X 3/4 Section Subdiv. No. 303E
 1/2 Section X 3/4 Section Subdiv. No. 303F
 1/2 Section X 3/4 Section Subdiv. No. 303G
 1/2 Section X 3/4 Section Subdiv. No. 303H
 1/2 Section X 3/4 Section Subdiv. No. 303I
 1/2 Section X 3/4 Section Subdiv. No. 303J

TE THOMPSON ENGINEERING, INC.
CONSULTING ENGINEERS
RISBY, IDAHO 83442

FINAL PLAT

LOCATED IN THE SW 1/4 OF SECTION 12, T4N 33E, R3E & NORTHWEST QUARTER SECTION 12, T4N 33E, R3E, IDAHO

Project Name: Mark Oland/Cave Remarks
 Date: September 10, 2003
 Drawn By: Kevin L. Thompson
 Scale: 1" = 100'
 Sheet: 2 of 2