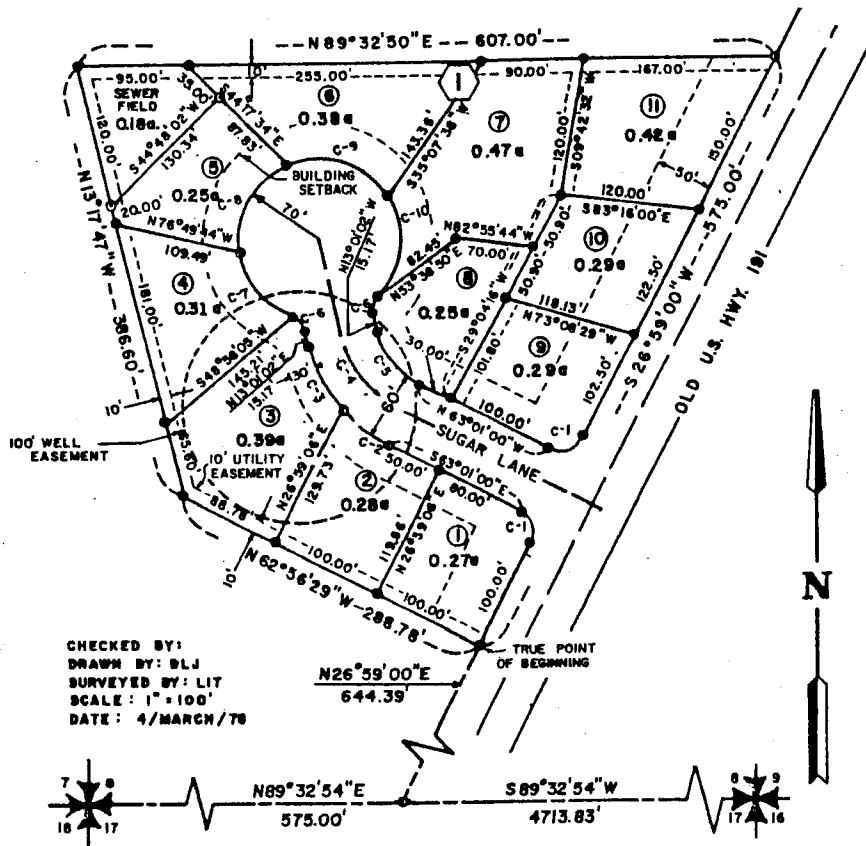


# SUGAR HOUSE PARK SUBDIVISION

DIVISION NO. 1  
JEFFERSON COUNTY, IDAHO  
T4N, R39E, B.M. SEC. 8



CURVE DATA

NO.	A	R	L	T	C
C-1	89°59'58"	20.00'	61.09'	20.00'	28.28'
C-2	22°37'11"	130.00'	51.32'	26.00'	50.99'
C-3	34°09'22"	130.00'	77.50'	39.94'	76.36'
C-4	50°00'01"	100.00'	87.27'	46.63'	84.52'
C-5	50°00'01"	70.00'	61.09'	32.64'	59.17'
C-6	56°15'02"	20.00'	19.64'	10.69'	18.86'
C-7	61°23'19"	70.00'	75.00'	41.55'	71.46'
C-8	74°51'44"	70.00'	91.46'	53.58'	85.09'
C-9	81°00'91"	70.00'	98.96'	59.79'	90.92'
C-10	75°15'05"	70.00'	91.94'	53.96'	85.47'

While this is a photographic reproduction of the recorded plat, the Company assumes no liability for variations, if any, with a re-survey.

FIRST AMERICAN TITLE COMPANY