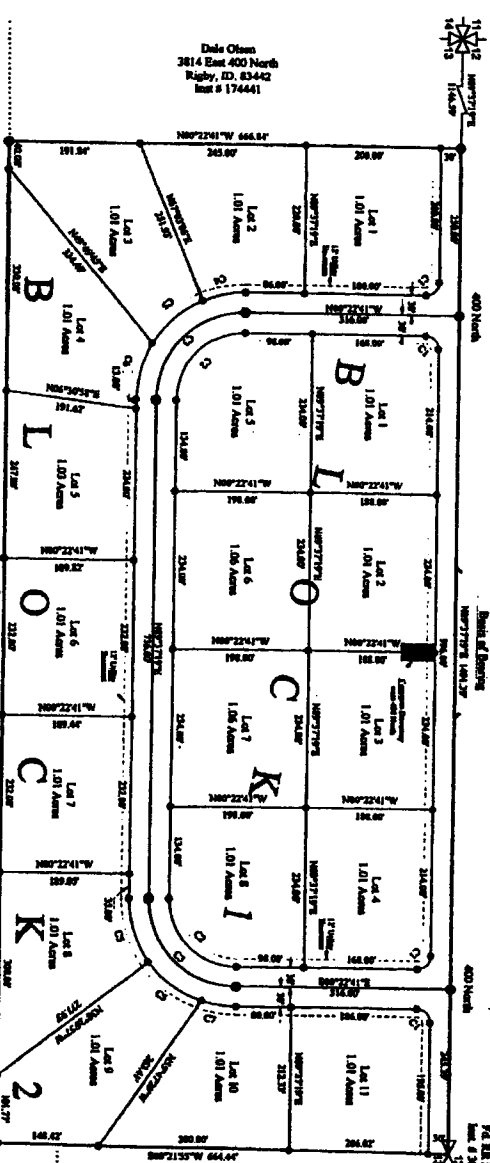


# WESTWIND ESTATES

DIVISION NO. 1  
JEFFERSON COUNTY, IDAHO  
LOCATED IN THE NW 1/4 OF SECTION 13, T4N R3E B1M

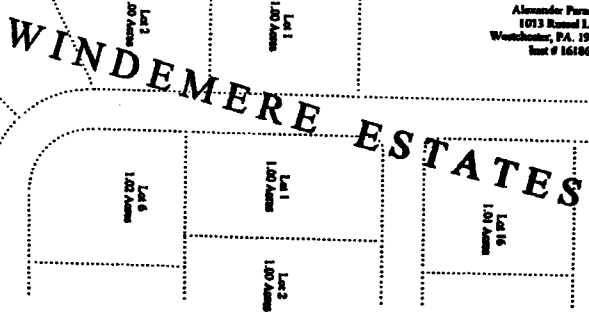
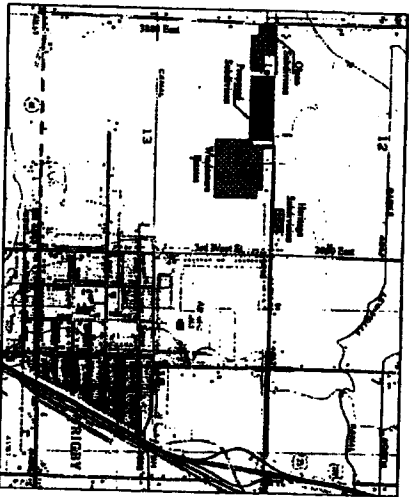


Curve No.	Delta	Radius	Arc	Chord
C1	90°00'00"	20.00'	31.42'	28.28'
C2	90°00'00"	100.00'	157.08'	141.42'
C3	90°00'00"	120.00'	188.50'	171.85'
C4	90°00'00"	150.00'	235.62'	216.21'
C5	90°00'00"	180.00'	282.74'	260.57'
C6	90°00'00"	210.00'	329.86'	304.93'
C7	90°00'00"	240.00'	376.98'	349.29'

**NOTES:**  
 NOTE 1: This subdivision falls outside the 500-year Flood Plain as per Map # 16021 (NOTES B).  
 NOTE 2: The Status of Survey was obtained from a Record of Survey done for Thomas Wilson by Thompson Engineering, Inc. (File # 200271). A subdivision of Section 13 is also shown on that Record of Survey.  
 NOTE 3: The intended use of this subdivision is for Residential Single Family Dwellings Only.  
 NOTE 4: All lots to be served by Enhanced Storm System.  
 NOTE 5: Lots 2 & 3 in Block 1 will have a common driveway 400' North. All other lots in the Subdivision will have driveway access onto the Road within the Subdivision.

**ACREAGE**  
 Total Subdivisions: 2273 Acres  
 19 Lots: 1921 Acres  
 Dedicated County Road: 341 Acres

**LEGEND**  
 • Set back X, Y or Z from Road Width of 60'  
 • Adjacent X, Y or Z from Road Width of 100'  
 • Utility Easement  
 12 Utility Easements



Thomas Windemere  
 2000 E. 10th Street  
 Boise, ID 83702  
 License No. 10083

Alexander Parvulescu  
 1013 Ross Street  
 Washburn, PA 19082-7547  
 License # 161960

## FINAL PLAT

LOCATED IN THE NW 1/4 OF SECTION 13, TOWNSHIP 4 NORTH, RANGE 3E EAST, JEFFERSON COUNTY, IDAHO

Project Name: Mark Chen  
 Job Number: 2000-09

Date: February 15, 2003  
 Surveyor: K.L.T.  
 Drawn By: K.L.T.

Scale: 1" = 100'  
 Sheet 2 of 2

**TE THOMPSON ENGINEERING, INC.**  
 CONSULTING ENGINEERS  
 REG'D, IDAHO 83442

**LAND DEVELOPER**  
 Mark Chen  
 3854 East 3200 North  
 Boise, ID 83742  
 (208) 353-8771



PA 88 Spikes  
 Lot # 200770  
 14.75

PA 88 Spikes  
 Lot # 200771  
 14.75