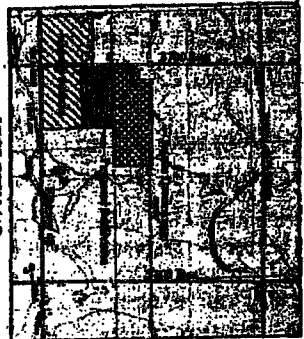
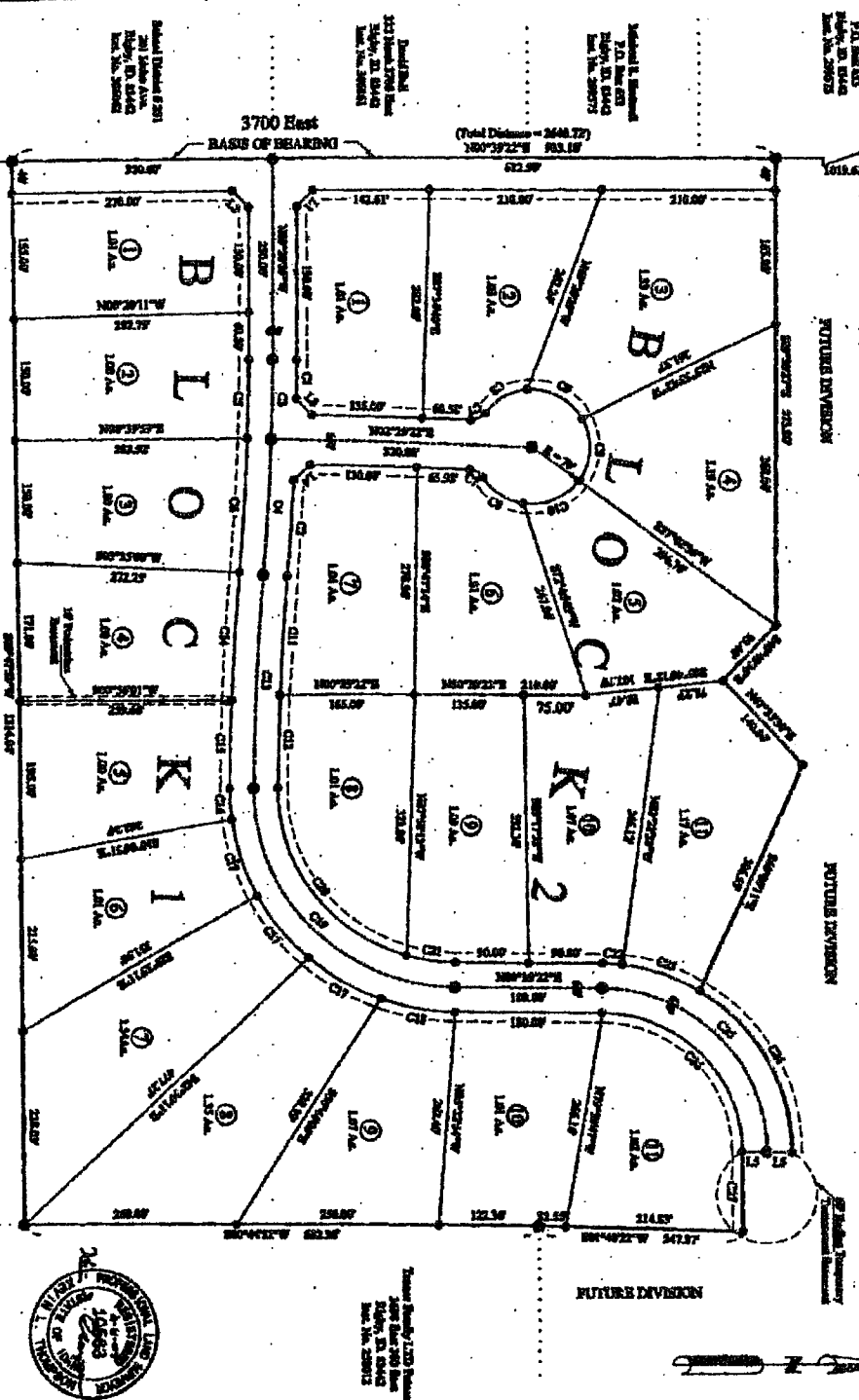


WOODHAVEN CREEK ESTATES

DIVISION NO. 1
JEFFERSON COUNTY, IDAHO
LOCATED IN THE SW 1/4 OF SECTION 14, T4N R36E B1M



VICINITY MAP
(No Scale)

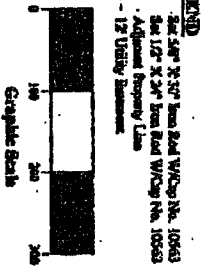
NOTES:
 NOTE 1: This subdivision also includes an 800 year flood plain as per FEMA Map No. 16010C0971E.
 NOTE 2: The State of Idaho has adopted laws to amend existing laws regarding the use of easements.
 NOTE 3: The standard use of this subdivision is for residential single-family dwelling units.
 NOTE 4: All lots within this subdivision will be served by a public water system. All wells to be located in the State of Idaho and Idaho systems in the State of Idaho.
 NOTE 5: All lots will conform with the applicable local zoning code and laws.
 NOTE 6: The Thompson Engineering, Inc. is not responsible for the use of these plans in any other manner than as intended.



Curve No.	Date	Radius	Arc
C1	07-23-07	3000.00'	47.27'
C2	07-23-07	3000.00'	117.78'
C3	07-23-07	3000.00'	51.79'
C4	07-23-07	3000.00'	163.81'
C5	07-23-07	3000.00'	51.79'
C6	07-23-07	3000.00'	117.78'
C7	07-23-07	3000.00'	47.27'

Line No.	Bearing	Distance
L1	N89°27'47"E	31.69'
L2	N89°27'47"E	11.52'
L3	S89°15'57"W	18.09'
L4	S89°27'47"W	30.00'
L5	S89°27'47"W	30.00'

ACREAGE
 Total Subdivision: 22.53 Acres
 22 Lots: 22.53 Acres
 Deducted County Road: 3.78 Acres



TE THOMPSON ENGINEERING, INC.
 CONSULTING ENGINEERS
 RIGBY, IDAHO 83442

FINAL PLAT

LOCATED IN THE SW 1/4 OF SECTION 14, TOWNSHIP NORTH, RANGE 36 EAST, JEFFERSON COUNTY, IDAHO

Project Name: Dennis Gray
 Job Number: 2004-28
 CAD File: GrayDen2004-28-2

Date: November 8, 2004
 Surveyor: K.L.T.
 Drawn By: B.R.T.

Scale: 1" = 10'
 Sheet: 2